

REETH & DISTRICT GAZETTE

ISSUE NO. 327

SEPTEMBER 2023



*Your local news magazine
for the two dales*

PRICELESS

**Join us for an Evening
with**
**Rhoda Fraser (the
Yorkshire Story Teller)**

On Thursday 21st September at 7.30pm at the Arkengarthdale Community Hub (St Mary's Church) we are welcoming Rhoda Fraser (The Yorkshire Story Teller) to entertain us with tales from the Dales.

Storyteller, raconteur, entertainer, and Arkengarthdale native, who better than Rhoda to regale us with stories of the shenanigans that used to go on up and down the Dales.

Of course, it's all based on true stories and real people! You never know, you or your relatives may have a starring role in some of the tales! Come along and find out, Everyone welcome. Cost is £4.00 which includes refreshments.



PRELOVED
THE JOY OF SECOND HAND



at

Gunnerside Village Hall

On Saturday 2nd September

11am-4pm

£1 entry

Refreshments available

All proceeds to Gunnerside Village and other local organisations



**Hudson House
Centre
Reeth**

**Owned by the Community of
the Two Dales**

Community

- Gallery
- Learning
- Library
- Orchard
- Transport

National Park Centre

North Yorkshire CC

Police

Richmondshire DC

Swaledale Festival

Business Forum

Hot drinks vending machine

Internet & WiFi

Local notices & information

Meeting Rooms

Tourist Information & Shop

Open all year

7 days a week

See website for times

Silver Street Craft Unit's
managed by Hudson House.

For all enquiries contact
Jill May.

01748 884485

www.hudsonhouse.info

REETH AND DISTRICT GAZETTE LTD

Gazette Management Team

Chairman: Susan Miller

Longstone, Low Row, Richmond
DL11 6NA

Tel: 01748 886 358

E-mail: chairman@reethGazette.co.uk

Secretary: Sue Alderson

Holme View, Low Row, Richmond,
DL11 6PE

Tel: 01748 886 292

E-mail: secretary@reethGazette.co.uk

Editor: Jackie Pope

Guildy Hall, Muker, Richmond,
DL11 6QG

Tel: 07885 498676

E-mail: editor@reethGazette.co.uk

Treasurer: Andrew Bedford

Glory Be, Blades, Richmond, DL11 6PS

Tel: 01748 886 974

E-mail: treasurer@reethGazette.co.uk

Subscriptions: Elsie Whitehead

5 Place Hill, Reeth, Richmond,
DL11 6SD

Tel: 01748 884 132

E-mail: subscription@reethGazette.co.uk

Distribution: Trevor Brown

The Cottage, Healaugh, Richmond,
DL11 6UA

Tel: 01748 884 111

Published by

The Reeth & District Gazette Ltd.

Company Number: 06541854

c/o The Company Secretary

Andrew Bedford, Glory Be, Blades

Richmond, North Yorkshire DL11 6PS

Tel: 01748 886 974

E-mail: treasurer@reethGazette.co.uk

No material may be reproduced in whole or in part without permission. Whilst every care is taken for accuracy, the publishers cannot be held legally responsible for any errors or opinions in articles, listings or advertisements.

ADVERTISING

For information on advertising and prices, please contact the treasurer. Advertising copy, should be sent to the editor.

The editor reserves the right not to publish any advert or article considered to be inaccurate or misleading.

All articles or items for inclusion should be sent to the editor
E-mail: editor@reethGazette.co.uk
or left at Reeth Post Office.

The Editor welcomes feedback

At the editor's discretion, your feedback will be published with Editor responses as appropriate.

Please send feedback to
editor@reethGazette.co.uk

Gazette Deadlines

The deadlines for the next two months are:

October issue: September 12th

November issue: October 10th

Posting The Gazette

To post a copy of this Gazette to a friend or relative, will require a Large Letter size and will cost £1.85 second class, or £2.25 first class.

PLEASE NOTE: We will endeavour to publish all suitable items submitted by the deadline date but this cannot be guaranteed and is at the sole discretion of the editor.

REETH AND DISTRICT GAZETTE LTD

Fremington
dalesbikecentre.co.uk
tel:01748 884908



Cafe & Cakery

SOUPER TUESDAYS
Homemade soup, bread roll,
slice of cake & hot drink
Only: £7 every Tuesday

OPEN EVERYDAY!

Book a Stay
14 beds Bunk & Breakfast

New & Ex Hire Bike Sales
Mountain/Road Bike Hire
E-Bike Hire & Sales
Bike Servicing

SHOW STOPPER FRIDAYS
Every week a 'Showstopper' of a cake!



REETH & DISTRICT COMMUNITY LUNCHEON CLUB
14TH SEPTEMBER 2023
12.30 FOR 1.00PM

PLEASE COME ALONG TO ENJOY A 2 OR 3 COURSE LUNCH IN THE "KING'S ARMS" MARKET PLACE, REETH ON THE THURSDAY 14TH SEPTEMBER 2023.
THE PRICES ARE FOR 2/3 COURSES OF HOME COOKING AT £10.00 OR £15.00 INCLUDING TEA & COFFEE.
WE WILL HAVE THE USE OF THE FUNCTION ROOM FROM 12.00 - 15.00 HRS.
ALL ARE WELCOME TO ENJOY GOOD FOOD AND HAVE A GOOD TIME MEETING NEW AND OLD FRIENDS.
PLEASE REMEMBER TO BOOK YOUR TABLE ON 01748 884259.

McGarry & Co SOLICITORS

Local Knowledge & Practical Advice

Your Legal Companion

- PROBATE & ADMINISTRATION
- WILLS
- AGRICULTURAL MATTERS
- POWERS OF ATTORNEY
- NURSING & RESIDENTIAL HOMES
- LAND TRANSACTIONS

Offices At: Barnard Castle Hawes

mbmcgarry.co.uk t: 01833 600 160 t: 01969 666 290
e. office@mbmcgarry.co.uk DL12 8EQ DLS 3QS

Keld Chapel Minister in Residence

From Sunday September 24th to Saturday September 30th, Revd. Jamie Kissack will be serving as minister in residence at Keld. Jamie is moderator of the Yorkshire Synod of the United Reformed Church.

He invites you to the following:

- Sunday September 24th at 2.00pm: Harvest Festival at Keld URC (taken by David Wood)
- Morning and evening prayer each week day: morning prayer at 9.00am; evening prayer at 6.00pm
- Thursday September 28th: 10.30am to 3.00pm. He will be leading a study day entitled : "Rivers of Living Water: Reading John's Gospel in a Thirsty World". There will be a charge of £10. Drinks will be provided but please bring a packed lunch.

Jamie will also be available for pastoral conversations either at the manse or in your own home. He will also organise an open-house event at the manse. Morning and evening prayer will take place in Keld Chapel. The Study Day will be in the Keld Resource Centre. Do come along. He would love to see you!

David Wood

Hillways, Gunnerside
Holiday Let - 2 bed - sleeps 4

Tel 07543 630202
stamosauruscraft@gmail.com



Going above and beyond for our clients...

For more information please visit our website at:
hallandbirtles.co.uk

CONVEYANCING FAMILY MATTERS WILLS THE ELDERLY CLIENT

Hall & Birtles
-SOLICITORS- **HB**

Our services include:

- Landlord & Tenant
- Buying & Selling Property
- Wills, Trusts & Probate
- Divorce & Matrimonial Matters
- Commercial & Private Disputes
- Agricultural Matters
- Powers of Attorney

30 min FREE initial consultation

Directors: Alastair C. Birtles BA Hons | Stuart J. Hall LLB | Deborah C. Parish LLB

Leysburn Office
The Office, Golden Lion Yard, Leysburn,
North Yorkshire, DL8 5AS
Tel: 01949 625226
Email: leysburn@hallandbirtles.co.uk

Hawes Office
Bank Chambers, Main Street, Hawes,
North Yorkshire, DL8 3QL
Tel: 01949 667171
Email: hawes@hallandbirtles.co.uk

Geoff Braithwaite Property Maintenance & Painting and Decorating

Tel: 01748 886 783
Mob: 0789 106 3546

Email:
geoff@mukerchapel.o.uk

VICTORIA COTTAGE

Lovely Period Cottage
Overlooking Reeth Green
Great Views. Sleeps 4

Email:
judy.roger@btinternet.com

Website:
www.victoriacottagereeth.com

REETH AND DISTRICT GAZETTE LTD

PINKtober

Through October we will be turning Reeth and Grinton in Swaledale pink to raise awareness about Breast Cancer and raise vital funds for ongoing breast cancer research by Cancer Research UK.

The support of the local businesses has been tremendous and a full programme of events will be taking place throughout the month in all locations, indoors and out!

St Andrews Church in Grinton have invited us to join their fabulous gospel choir event with the Lakes Choir including a pink cream tea on the 30th of September. Tickets available in Reeth Post Office and other outlets for £10.

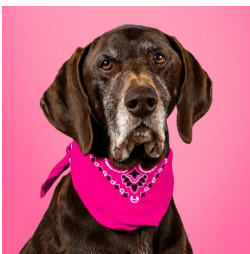
PINKtober will kick off on 1st October with a walk starting at 14:00 from Reeth to Grinton and back, led by Reeth's spectacular brass band and organised by the Black Bull pub.

Music evenings throughout the month will be held in the pubs with pink quiz nights, tombolas and raffles, all raising much needed funds.

The Buck pub will be hosting a craft fair on the 15th of October between 10:00-16:00 with some brilliant stalls in attendance.

Scenic View gallery will be photographing local dogs in pink bandanas on 7th and 14th September

between 18:00-19:00. All pink pooches in the dales portraits will then be exhibited in Hudson House at a coffee morning on the 27th of



October with a public vote taking place to crown the "cutest pink pooch".

The month will end with an open invitation to join us in Reeth Orchard to celebrate our efforts and hold a candle ceremony, Helen's Hearts of Hope, with the centre piece being a tree full of pink hearts filled with messages of hope to beat this disease together. Handmade hearts are available to purchase around Reeth and Grinton.



Reeth will be decorated pink all month thanks to an army of wonderful volunteers from all around the country who have been tirelessly knitting and sewing pink bunting!

This is just a taste of what will be taking place as we've been working hard behind the scenes and so much more is planned to really turn Reeth pink in aid of Breast Cancer research. We hope to make this a truly memorable month and raise as much money as possible whilst having great fun together in the community in the process. We hope you can come along and support us in October or if you would like to get involved contact us by email at pinktoberinthedales@gmail.com or on June Ashton's Facebook.

Notice

THE CHARLES ALDERSON TRUST

The above Trust was established, in memory of Charles Alderson, for the purpose of relieving, in cases of need, persons resident in the former Rural District Of Reeth (the parishes of Arkengarthdale, Ellerton Abbey, Fremington, Grinton, Marrick, Melbecks, Muker and Reeth) who are sick, convalescent, disabled, handicapped or infirm, by providing or paying for items, services or facilities which are calculated to alleviate the suffering or assist recovery of such persons, in such cases where help is not readily available to them from other sources.

**Applications for assistance should be made in writing to
The Clerk to the Trust,
Mrs C Steward,
2 Hillary Terrace, Reeth, Richmond,
North Yorks, DL11 6TG**

Music Tuition for all ages with
www.colinbaileymusic.co.uk
07711 211169

Drums & Percussion; Vocals;
Piano & Keyboards; Music Theory;
'Get Musical' Workshops.



NEW CAR?

We probably can - most makes.

USED CAR?

We surely can - thousands to choose from

LCV / DOUBLE CAB?

Of course we can - new or used.

FINANCE?

We certainly can.

PCP Contract Hire

Lease Purchase Hire Purchase

Part exchange welcome.

Jed Collins, Bridge Garage, Reeth

01748 - 884245

Service MOT Parts Tyres Bodywork

D. J. OLNEY

Painter & Decorator

Interior & Exterior

Call

01748 825472 or

07801 026 006



**ANDY MALTON LTD – DALES
GENERAL BUILDING CONTRACTOR**



Dry lining/ plastering/ ceiling work

Roofing/ pointing/ guttering work

Most building repair work carried out

Free estimates - No job too small

01969 624979 / 07837645104

andymalton56@gmail.com





Why not join us this September?

The Station Singers comprise three community choirs under the musical direction of Carol Gedye. We rehearse once a week, leading to a performance in St Mary's Church, Richmond. This term our concert will be 'Christmas Caroling around Europe' on Saturday 9th Dec. 2023, aiding Richmond Refugee Support Group.

Our new term starts on 13th and 14th September, there is no audition and anyone who likes to sing is welcome to join.

Platform 1 meets on Wed. 13th Sept. from 9.30 until 11.00 at The Station.
Platform 2 meets on Wed. 13th Sept. from 11.15 until 12.45 at The Station.
Branch Line meets on Thurs. 14th Sept. from 20.00 until 21.30 at Town Hall.

New members should just turn up for a free taster session on 13th/14th September and we hope that you will become part of our community. The autumn term fee is £72. We offer a reduced subscription if you genuinely need financial support.

Visit www.richmondstationsingers.co.uk for further details. Go to the Join Us section from the menu.

We look forward to welcoming you into one of our choirs.

Helen David



Visitor Centre Open Daily

Calvert's Now Open!

Light bites, delicious mains, coffee & cake.
NEW Cheese Bar menu - tapas style dining

1897 Coffee Shop & dog friendly garden

Homemade soup, sandwiches & snacks, cake, coffee & ice cream, with views over the Dales

Cheese Experience & Pairing Room

Book online for daily demos & guided pairings

Try our **NEW Cheese Trail Quiz** and have your picture taken with Wallace & Gromit

Cheese & Gift Shop

Beautiful gifts, delicious treats & cheese sampling

wensleydale.co.uk



Beauty and tranquillity.

Quality and care.

Cat Hole Cottages | Cat Hole House | Thwaite
Richmond | North Yorkshire | DL11 6DR
Tel: 01748 886366

Discover our treasury of gorgeous cottages in Swaledale and Arkengarthdale.

Well-equipped, stylish and individual, our cottages offer guests a wonderful holiday in the midst of superb scenery!

**To find your perfect cottage
call Judith on 01748 886366**

www.catholecottages.com

2Dales Digital

Family Business to Support
you at home



Need help or friendly advice

Call Mike & Anne on:
01748 884737

Email us at:
mikebarden@yahoo.com
See us at website:
www.2dalesdigital.co.uk

**Local Support for your
Desktop, Laptop, Tablet
& Console Issues.**

**Windows, Apple,
Android, Playstation
and Xbox Supported**

To celebrate the lives of
**Duncan Bythell & Shelagh
Tomlinson**



A Memorial Concert
featuring **Muker Silver Band,
Swale Singers and Soloists**



**Gunnerside Methodist Chapel
Saturday 7th October at 7.30pm**

All are welcome

A retiring collection to be taken on
the night

All proceeds to **Gunnerside
Methodist Chapel and St Mary's
Church, Muker**

Fremington Village Hall

Redecorated and now with it's own piano, the Village Hall (known locally as the Sunday School) is available to hire for all kinds of events, from regular classes, talks and community activities, to one-off functions like children's parties, lunches and dinners and special occasions such as wedding receptions and anniversary parties. The Hall has a small kitchen with electric cooker and microwave; toilet facilities including disabled toilet; and a small rear garden.

The Hall is a registered charity run by a small and dedicated volunteer committee. You can book the Hall by phoning or texting the bookings secretary **Alison Tupman** on **07967 839494** or by email at **fremingtonvillagehall@outlook.com**

Dales Reyno-Vations



General Building & Maintenance

Property renovations / Roofing

Kitchen fitting / Joinery

Bathroom suites / Tiling

Painting & Decorating

Patios / Landscaping / Ground maintenance

Free estimates / Insurance quotes

No Job too small

D Reynoldson

11, Place Hill, Reeth, Richmond
North Yorkshire, DL11 6SD

01748884309 / 07792458801

Email: david.reeth1@outlook.com



JEREMY MOON

— DECORATOR & PAPERHANGER LTD —

Established 1981

Quick turnaround for holiday homes and lettings

Fully insured

Reliable and trustworthy tradesman

High class decorating at affordable prices

References available upon request

Call Jeremy for a free quotation

T: 01748 880 155

M: 07876 764 812

Email: JEREMYLMOON@BTINTERNET.COM



Wensleydale Concert Series

It is hard to believe that we end our 2023 series this month - it seems like only yesterday I was writing about our first concert in May. This year has seen some really superb musicians visiting Wensleydale and September is going to be no exception!

On Saturday 2nd September we are privileged to welcome cellist Moray Welsh. Moray moved to Leyburn a few years ago but he has had a long and very distinguished international career as a soloist, chamber musician and for many years he led the cello section of the London Symphony Orchestra. He is joined by Martin Roscoe who is one of the busiest and most highly respected British pianists of his generation. Their concert features Rachmaninoff's tremendous sonata for piano and cello, a set of variations and a sonata by Beethoven.



Our final concert, on 16th September, features the amazing French Horn player Ben Goldscheider together with Huw Watkins. This will be Huw's second visit to the series. He is not only a brilliant pianist (often described as

the busiest and most adaptable pianist on the British stage) but also a prolific composer. Ben won the brass section of the BBC Young Musician of the Year in 2016 and since then he has developed a brilliant career as a soloist and chamber musician, indeed as I put together the programme for the series in 2022 I was listening to him playing a concerto at the BBC Proms in the Albert Hall. Their concert is hugely varied, with music that appeals to all tastes including Beethoven, Ravel, Schumann, Rachmaninoff and also includes a work by Huw Watkins and more. A great end to our 2023 series of concerts.

Both concerts are at 730pm in St Andrew's Church, Aysgarth and tickets cost £15 (or £1 for anyone in full time education). You can also preorder a printed programme for £1 extra. If possible please book in advance. You can find full details and order tickets online at our website www.wensleydaleconcertseries.co.uk or our ticket agent TicketSource by phone on 0333 666 3366 (quote date, Wensleydale Concert Series and the musicians names). Parking is at the special rate of £1.50 in the Falls Carpark (just up the hill from the church). If you have mobility issues there is limited parking at the church. Any other questions please call Carol or Liz on 01969 663026.

A. HOWARD JOINERY

no job too small

01748 884045

andrewhowardjoinery@gmail.com

Talking Pictures



Mission Impossible Dead Reckoning Review by John Hunter

Perhaps the two reasons which may put people off seeing the new Mission Impossible movie at the cinema are a) it runs almost three hours and b) it is clearly billed as 'Part 1' suggesting an incomplete and perhaps unsatisfactory storyline. Let me put your mind at rest

- at no point was I fatigued during the extensive running time, with the necessary scenes of exposition sandwiched between

some of the most breath-taking and audacious action scenes ever filmed. The overall story arch (i.e. catching the villain and saving the world) will of course be concluded in next year's 'Part 2', but the current movie still feels 'complete' in itself - think the end of a Bond film where Blofeld escapes to return next time.

So it is actually any good? - Whilst not quite capturing the *pure essence* of Mission Impossible found in 'Ghost Protocol' and 'Rogue Nation', we have the whole team back one more time, with Simon Pegg's 'techie' Benji grabbing the best lines, and Ving Rhames having much more to do and

say than before, even giving our hero a pre-climax pep talk. New this time is Hayley Atwell's terrific 'super-thief' who becomes embroiled in the action by default and more than holds her own with the 'regulars'. Humour actually comes to the fore this time around and is handled very well. There is a terrific car chase around Rome where our heroes (in a diminutive but supercharged Fiat 500) are pursued by both local police *and* the bad guys (dozens of them) - a frustrated line 'are we being chased by *everyone?*' a nice touch.

Along with Esai Morales as 'number one' villain, French actress Pom Klementieff scores highly as a super-assassin

(this pair somewhat reminiscent of the older Bond films when the villain had a 'quirky' henchman).

The plot involves that Hitchcockian device, the 'McGuffin' - here a two part 'key' which could unlock a Pandora's box A.I. super-weapon, shown destroying a Russian Submarine at the start. Whoever controls this key has absolute power and the safety of us all is at stake - *no pressure on the IMF team then!* Making a welcome return from the very first film is Agent Kitteridge (remember when Ethan blew up that Aquarium - "you've *never* seen me angry...") who has a pivotal role.

There are numerous great sequences -



REETH AND DISTRICT GAZETTE LTD

a life or death hand to hand in a narrow alley, a shoot-out in the desert etc and the much publicised motor bike 'jump' which kicks off the extended finale sequence. There is plenty of website coverage showing how this was achieved, but just watch and enjoy one of the most bankable stars in the world actually ride a motorbike off the top of a mountain - stunning. The ensuing steam train chase, (rumoured to have footage shot at the NYMR) whilst occasionally seeming to buck the laws of physics, is the best you're likely to see. Again, one for the biggest screen possible.

NORTHERN WALLS DRYSTONE WALLING & LANDSCAPING

Former National Trust
gardener with 20 years
experience
City and Guild Certificate in
Horticulture

www.northernwalls.com
Tel 0795 148 1239

Cosy Holiday Cottage
Attached to owners' farmhouse
on hill farm in Arkengarthdale.
Sleeps 2. No pets. E.M. on request.
Mrs Gladys Atkinson
Tel. 01748 884550

Friends of Marrick Priory



Reeth Memorial Hall

Friday 6th October 6-30pm

🤗 A Great fun evening & raffle 🤗

Tickets £15 on sale at Reeth Post Office
..bring a bottle
Supporting this unique charity enables
many children to have an experience
they will always remember🙏🤗

James Peacock



Solid Fuel Merchant Bainbridge

Good quality fuels at
competitive prices.
Deliveries to Wensleydale,
Swaledale and Coverdale.
No delivery too small.

Tel. 01969 650212/650465

Email:
jamespeacock@btconnect.com
www.james-peacock.co.uk



Rehearsals for Swale Singers resume on Sunday 3rd September at 3pm in Reeth Memorial Hall.

This term we are working towards two concerts. The first is on October 7th and is a joint concert with Muker Silver Band, taking place in Gunnerside Methodist Chapel. It is a memorial concert in honour of Shelagh Tomlinson and Duncan Bythell, both of whom had very strong connections with both sets of music makers. For this concert we shall be performing pieces that we know were dear to them, including Lauridsen 'O Magnum Mysterium'; Stainer 'God so Loved the World'; Faure 'Pavane'; Sullivan 'The Long Day Closes'; Randall Thompson 'Alleluia'; Bruckner 'Locus Iste'. We would be delighted to welcome back any past members of Swale Singers who would like to join in rehearsals during September and sing these pieces with us.

For our December concert, to be held on December 9th in Reeth Memorial Hall, we shall have a festive theme, and pieces will include Vivaldi 'Magnificat'; Jonathan Wilcocks 'On this day rejoice'; Eric Whittaker 'Sleep' and 'Lux Arunque'; Lauridsen 'O Magnum Mysterium'; Ring Out Wild Bells. We welcome any new singers to join us in September. We are a friendly choir and we don't hold auditions. Do come along and see if you would like to sing with us.

Jackie Pope

TALL TREES LANDSCAPES

Garden Design - Hard Landscaping
Tree Surgery- Soft landscaping
and Garden Maintenance.

Please have a look at our website, email or
phone us for a full range of services.

talltreeslandscapes.co.uk
talltreeslandscapes@hotmail.com
0792932227

CHAPEL GALLERY

2023 Tuesday Workshops at Chapel Gallery Hawes

(all start 10am):

Date	What	Finish	Price
05-Sep	Needle Felted Landscape	4pm	£65
19-Sep	Garden Inspired Rag Rug Panel	4pm	£55
26-Sep	Photography (start 9am)	5pm	£65

Please contact Ellie at
info@chapelgalleryhawes.com for details and
other courses.

Or book via www.chapelgalleryhawes.com

Burtersett Road, Hawes, DL8 3NP



SALES - LETTINGS - MANAGEMENT
FREE 'NO OBLIGATION' MARKET APPRAISAL AVAILABLE
UPON REQUEST

6 Bridge Street
Bedale
DL8 2AD
01677 422282

bedale@
normanfbrown.co.uk

14 Queens Road
Richmond
DL10 4AG
01748
822473/822967

richmond@
normanfbrown.co.uk

25 Market Place
Leyburn
DL8 5AS
01969 622194

leyburn@
normanfbrown.co.uk

www.normanfbrown.co.uk



nh flooring

**The Carpet
& Flooring
Specialist**

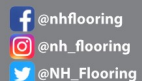
- Amtico
- Karndean
- Panaget
- Brintons
- Westex
- & more

- Carpets
- Wood Flooring
- Laminates
- Vinyl Tiles
- Vinyl Sheets
- Rugs
- Accessories



Contact us now for a **FREE** quote, advice or more information

t: 01748 822834 **m:** 07789 996526
e: enquiries@nhflooring.co.uk
w: www.nhflooring.co.uk



Unit 6 Borough Court, Borough Road, Gallowfields Trading Estate, Richmond. DL10 4SX

Clarksons

MORE THAN ACCOUNTANTS

Are you looking for more from your accountant?

We believe businesses deserve more than just having their accounts and tax returns filed.

Whatever your accounting or business needs, we offer a personalised service to ensure we assist you in fulfilling your business's potential.

w: www.clarksonsaccountants.co.uk e: info@clarksonsaccountants.co.uk t: 01969 624999
Thornborough Hall, Leyburn, North Yorkshire, DL8 5AB

Follow Us on Twitter @ClarksonsAcct

Find Us on Facebook @ClarksonsAcct

The Black Bull

Reeth's Oldest Inn, serving a range of Real Ales

Comfortable en-suite
accommodation,
Traditional Pub Fayre served daily
Sunday Carvery (booking advised),
Coaches welcome

Tel: 01748 884 213,
Email: bookings@theblackbullreeth.co.uk,
Black Bull, Reeth, DL11 6SZ,
www.theblackbullreeth.co.uk



REETH AND DISTRICT GAZETTE LTD

Gunnerside TLC talk 28 September Women's role in WW1 and WW2

TLC is delighted to welcome Helen Guy of Keld Resource Centre as their speaker on **Thursday 28 September at 7.30 in Gunnerside Village Hall.**

Her talk covers the impact of the two Great Wars on Keld and its residents, including profiles of the four men who never returned home from WWI and the impact this had on their mothers and families. This will be followed by a first-hand account of what it was like to live through WW2 through the memoirs of Joan Mee, who was the minister's daughter in Keld at that time. She tells of how the women of the village supported the war effort through fundraising, organising social events and entertainment, and taking in refugee children into their homes.

Not a member? You're very welcome to come to the talk as a guest for an incredibly modest £2. Or for just £5, you can be member for a year and come to all our talks free.



**Bespoke
Tutors**

Maths, Science, English Private Tutors

Gaynor Voice & Kate
Roxburgh

Brown Hill Top
Low Row
Richmond
DL11 6NB

Tel. 01748 886201
Email: bespocketutors@gmail.com
m
www.bespocketutors.org.uk

Imogen Hartley
Qualified MAKEUP ARTIST
(MUA Diploma)

- Bridal
- Any special occasion

07947 210904

Instagram

@thefacetobe

www.thefacetobe.co.uk



Wensleydale Tree & Horticulture Services (Est. 1995)

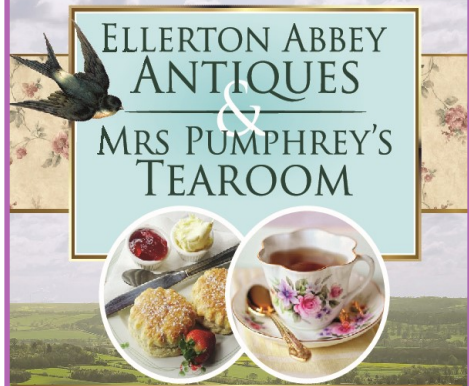


David Allen (HND Arboriculture)
Fully Insured (£5 million)
Professional tree work: felling,
crownthinning etc. to BS3998

Tel 01969 667364 Mobile: 07811 576108

E-Mail: treeshawes@gmail.com

www.treesinwensleydale.com



Open Thursday, Friday and Saturday 10 - 4

Ellerton Abbey, Richmond,
North Yorkshire DL11 6AN

Tel: 01748 884321
Mobile: 07948 426099

Find us on

facebook



REETH AND DISTRICT GAZETTE LTD



DATE FOR YOUR DIARY 'Flu Clinic 2023

We will be holding an open Flu Clinic at
Reeth Memorial Hall on:
Thursday 21st September between
09.30am - 11.30am.

Just come along, no appointment
necessary!

**Those entitled to a free NHS
vaccination in this clinic are as
follows:**

- All those **aged 65 years and over**
- Pregnant Ladies
- Registered Carers

And patients with any of the following
medical conditions:

- Chronic respiratory Disease (COPD,
asthma, etc)
- Chronic Heart Disease (e.g. heart
failure, angina)
- Chronic Liver Disease
- Chronic Neurological Disease (e.g.
Parkinson's Disease, strokes)
- Chronic Renal Disease
- Diabetes
- Immunosuppression (suppressed
immune system due to disease or
drugs)

NHS England have chosen not to offer
flu vaccines to patients aged between
50 and 64 without medical conditions
this year so please check the list above
as patients who could get a flu vaccine
from us last year might not be entitled
to one this year.

**On the day, please remember the
following:**

- Do not attend if you are feeling
unwell
- Attend ready to receive your
vaccination - wear a short-sleeve,
loose-fitting top
- Bring a bag for any coats or jumpers
as there will be nowhere to put items
down

We look forward to seeing you for your
vaccination!

The RMC team

NYCC HOME LIBRARY DELIVERY SERVICE

**We deliver books, audiobooks,
DVDs and information to the
homes of people who find it
difficult to get to their local
library.**

**If you are interested in
receiving monthly deliveries
please contact
North Yorkshire Libraries
Headquarters on
01609 533800
Or Catterick Garrison Library**

PROPERTY MAINTENANCE

General Building Work, Dry Lining,
Decorating, Electrical Work, Kitchen
Fitting, Joinery, Paving, Garden
Maintenance, Roofing, pointing &
guttering work. Small jobs welcome.
Free estimates.

Contact Martin or Django
Tel 01748 886 465 Mob: 07813 715 120
Email: martinkiss1960@gmail.com

REETH AND DISTRICT GAZETTE LTD

Leyburn Arts and Community Centre

The highlight in September is our **Community Shed Family Fun Day on Saturday 16th September** from 10am to 4pm. The hurdles have been overcome and it seems a long time from its inception in 2019 as a project to have a Men's Shed. Many months later and after much research, planning and discussions there are now signs developing of our Community Shed appearing! We've already ordered the fine weather! There will be lots going on, for all ages, including demonstrations of crafts, activities for young people, a 'Bloke Stuff' stall of useful (?) old tools etc, Target Golf, Splat the Rat, Spin the Wheel, Giant Buzz Wire etc.

Come along and hear about the progress with the Community Shed and have a coffee and home made cake in our café and browse the books and jigsaws in the Little Shop. It is also the date of the fundraising Community Shed Draw. Lots of prizes so make sure you have your ticket. Get the date in your diaries! It's free entry.

Home made delicious Blackcurrant jam is now for sale, from this year's crop. Bargain price, £3 for a large jar.

Our Knit and Natter group are busy making poppies again for Remembrance events in November. If you are able to knit or crochet or sew, and wish to support, all contributions will be appreciated at the Centre.

For our other events go to the website www.leyburnartscentre.com where you can also book. **Jeannie**

The Bridge Inn, Grinton

Tel 01748 884224 www.bridgeinn-grinton.co.uk

Traditional coaching inn serving quality food in the restaurant and bars
Open all day. Food 12noon to 2.30pm and 5.30pm to 9.00pm



Recommended in the CAMRA and Good Pub Guides
Music night with local musicians Thursday from 9.00pm
Children and dogs welcome. En suite accommodation



Yoga Classes



From Tuesday, 19th Sept 2023
9.30-10.30 Reeth Memorial Hall
Introductory price £5
(regular price £7).

For details, contact Debbie
yogadebbie@hotmail.com
or 07707 683317

Property Maintenance & General Building

Building work & property maintenance
undertaken

Plumbing, tiling, plastering
Kitchen & bathroom fitting
Joinery works

Small jobs welcome

Free No Obligation estimates

Also detail plans prepared for planning
applications

Contact Gary

Tel. 01748 886691 / Mob. 07896
147207

E-mail Swaddyman@gmail.com

Reeth Community Orchard

This year our Apple Day will be held on
Saturday, 21st October from 11 am to
3 pm.

If anyone can offer locally made
produce or plant donations for the day,
it would be very welcome.

Please contact Josie on 01748 884824.



Holy Trinity Low Row

Everyone is invited to an All-Age
Harvest Festival Service at Holy
Trinity Low Row on Sunday 1st October
at 11am.

We would really love it if some of the
younger members of our community
would like to get involved and help out
at the service. If you would like to
know more contact Linzi -

linzi.blundell@leeds.anglican.org

Whatever your age, you would be very
welcome to join us for this service of
Holy Communion, where we will
celebrate God's abundant gifts, be
thankful for what we have, and bring
something to share with those that
have less than ourselves.

Linzi Blundell



**R.A.Lofthouse
Roofing Services
Kirkby Stephen**

We SPECIALISE in traditional and
modern slating and tiling

- Traditional slate specialist
- Re Roof / Repair work
- Slating, flagging & tiling
 - Lead work
- Velux replacement /installation
- Chimney repair/replacement

For a FREE quotation or any
enquires please call:

Tel: 017683 48787

Mob: 07557738016

or email us on:

r.a.lofthouse@outlook.com

**The Two Dales Community Company
Hudson House Ltd**



**Notice of the 20th Annual General Meeting
and Partners' Meeting to be held on
Tuesday 5th September 2023 at 3.30pm
At Hudson House**

AGENDA

- 1. Apologies for Absence**
- 2.* Minutes of the 19th Annual General Meeting**
- 3. Chairman's report**
- 4.* Financial report and acceptance of the audited accounts**
- 5. Appointment of auditor**
- 6. Proposed changes to Articles 29,30 and 32 of the Articles of Association.**
- 7. Directors:** The Board currently consists of: Nick Caldwell, Martin Cluderay, Mike Evershed (Chair), Richard Good, Helen Guy, Gail Hall (Vice Chair), Mark Jones, Penny O'Regan (Company Secretary & Finance Director), Mike Keenan and Tony Oldershaw. In accordance with paragraphs 26 to 34 of the Company's Articles of Association, one third of the Directors must resign by rotation – Penny O'Regan, Gail Hall and Tony Oldershaw are due to retire as Directors this year, they may stand again if they wish. Up to six more Directors may be appointed and proposals for new Directors are welcomed.
- 8. Round-table comments from Partners**
- 9. Questions from the meeting not covered in the items above**

** These documents will be available at Hudson House from 29th August, and at the meeting.*

Hudson House is a community led company wholly owned by members of the communities of Swaledale and Arkengarthdale. It does not receive any direct funding from public bodies.

The Annual General Meeting is open to everyone who lives, works, owns residential property in, or is on the electoral roll of the two electoral wards of Reeth with Arkengarthdale and Swaledale within the Richmondshire Rural District of the County of North Yorkshire
No fees or subscriptions are payable.

The Board of Directors meets a maximum of eight times a year and oversees the running of Hudson House

Your views and ideas will be welcome at the AGM

Appointment of new Directors:

Please contact Mike Evershed on 01748 884485 before 22nd August 2023 if you wish to nominate a new Director.

Signed: Penny O'Regan, Company Secretary
Registered Office: Hudson House, Anvil Square, Reeth, North Yorkshire DL11 6TB
Hudson House Ltd is a not for profit Company Limited by Guarantee,
Registered Number: 4247561



FREE
Professional
Spot & Stain
Remover



Carpet Cleaning
Rug Cleaning
Upholstery Cleaning
Mattress Cleaning

*Proudly serving The Dales
Since 2014*

Leyburn - 01969 622620
Mobile - 07944 774947

www.ecodrycarpetcare.co.uk



VANESSA HUNTER
LRAM, LTCL, IPA(Cert)

SPEECH, DRAMA and PUBLIC SPEAKING

Build confidence and improve interview technique.

Students accepted from the age of five through to adults of any age.

Examinations can be taken if wished with either RADA or London College of Music and Media.

Higher grade examinations qualify for University points.

Telephone 01748 886343 for further information.



Yorkshire Dales Accountancy
Chartered Accountants

taxation & business advisors

Providing a broad range of accountancy and taxation services across a variety of sectors, including:

- Accounts • Business Tax • Personal Tax • VAT • Payroll
- Construction Industry Scheme • Capital Gains Tax
- Inheritance Tax • Making Tax Digital



Hawes - Leyburn

2 Chapel Street, Hawes
North Yorkshire, DL8 3QG

E: info@yorkshiredalesaccountancy.co.uk
T: 01969 678128

www.yorkshiredalesaccountancy.co.uk

Dales Police Crime Bulletin



Monthly Police Report - July 10th - August 10th

We do not report crimes whereby victims could be identified, for example Domestic Violence or harassment, although they are included in the totals below.

Crimes of note; overnight 13th July a Honda quad bike and sprayer were stolen from the Ellerton Abbey area. Overnight 21st July Theft of 2x pedal cycles from an event at Grinton/Fremington. The bikes were recovered and 2 x persons were arrested. Reported on 22nd July a bale squeeze was stolen from a farm in the Satron area.

- 10 - Crime Violence
- 38 - Abandoned calls (pocket dials)
- 1 - Criminal Damage
- 8 - Theft (includes theft of diesel from Plant Machinery during road works and theft of Traffic management diversion signs)
- 16 - Road Traffic Collisions (minor)
- 6 - Antisocial Behaviour
- 1 - Attempted Burglary
- 2 - Fraud/Attempt Fraud (call allegedly from BT to gain access to computer and bank accounts)
- 1-Burglary
- 5-Road related offence (manner of driving/possible OPL/vehicles without tax or insurance)
- 5-Suspicious circumstances (possible poaching/suspicious vehicles)
- 3-Domestic Incidents
- 7-Highways disruption (Livestock / Trees in road)

In total 179 calls were received reporting either the above or making general enquiries.

Members of the team will, over the coming month, be attending as many Parish and Town council meetings as possible, duties permitting. We will also be attending local community groups for a chat and to provide advice on any security or other issues raised.

Don't forget, if you haven't already, to sign up to North Yorkshire Community messaging.

<https://www.northyorkshirecommunitymessaging.co.uk>. You can also catch up on the North Yorkshire Police Facebook site.

PCSO Don Watson
PC355 Heather Campbell
PCSO 5777 Sharon Diamond
PCSO 5550 Tracie Taylor-Paige

The Old School Muker
Art Gallery & Craft Centre

Guning Lane, Muker, Swaledale, DL11 6QG
www.theoldschoolmuker.co.uk
Tel: 01748 886155
email: ask@theoldschoolmuker.co.uk

REETH AND DISTRICT GAZETTE LTD

Church Opening Times and Services in September

3rd Sept.	9.15 am	St. Mary's Muker	<i>Eucharist</i>
	10.30 am	St Joseph & Francis Xavier, Richmond	<i>Mass</i>
	10.30 am	Low Row URC	
	11.00 am	St. Edmund's, Marske	<i>Holy Communion</i>
	11.00 am	Holy Trinity Low Row	<i>Eucharist</i>
	11.00 am	Reeth Evangelical Congregational	
	6.30 pm	Reeth Evangelical Congregational	
10th Sept.	9.30 am	St. Andrew's Grinton	<i>Eucharist</i>
	9.30 am	St Michael's Downholme	<i>Morning Prayer</i>
	10.30 am	St Joseph & Francis Xavier, Richmond	<i>Mass</i>
	10.30 am	Low Row URC	
	11.00 am	Reeth Evangelical Congregational	
	11.00 am	St. Edmund's, Marske	<i>Morning Prayer</i>
	11.15 am	St. Mary's Arkengarthdale	<i>Holy Communion BCP</i>
	6.30 pm	Reeth Evangelical Congregational	
	6.30 pm	Gunnerside Methodist	

Church of England

Reverend Caroline Hewlett

Vicar of the Parish of Swaledale with Arkengarthdale

01748 884 706 carolinejhewlett19@gmail.com

Religious Society of Friends (Quakers)

Quaker House, 7 Grove Square, Leyburn every Sunday at 10.30 am
The Scout Hut, Quakers Lane, Richmond 2nd and 4th Sundays at 10.30am
www.dalesquakers.org.uk

REETH AND DISTRICT GAZETTE LTD

Church Opening Times and Services in September

9 th Sept	9.15 pm	St. Mary's Muker	<i>Holy Communion BCP</i>
	10.30 am	St Joseph & Francis Xavier, Richmond	<i>Mass</i>
	10.30 am	Low Row URC	
	11.00 am	Holy Trinity Low Row	<i>Eucharist</i>
	11.00 am	Reeth Evangelical Congregational	
	11.00 am	St. Edmund's, Marske	<i>Holy Communion</i>
	6.30 pm	Reeth Evangelical Congregational	
24th Sept.	9.30 am	St. Andrew's Grinton	<i>Eucharist</i>
	9.30 am	St Michael's Downholme	<i>Holy Communion</i>
	10.30 am	St Joseph & Francis Xavier, Richmond	<i>Mass</i>
	10.30 am	Low Row URC	
	11.00 am	Reeth Evangelical Congregational	
	11.00 am	St. Edmund's, Marske	<i>Holy Communion</i>
	11.15 am	St. Mary's Arkengarthdale	<i>Harvest Festival Service</i>
	2.00 pm	Keld URC	<i>Harvest</i>
	6.30 pm	Reeth Evangelical Congregational	
	6.30 pm	Gunnerside Methodist	

<p style="text-align: center;">United Reformed Church G Edward Brown 01748 886 181 edwardbrown@f2s.com And Sue Alderson 01748 886292 Susana@swaledale.org</p>	<p style="text-align: center;">Methodist Reverend Julie Reid Minister for the Two Dales 01748 823 149 Rev.julia.reid@gmail.com</p>
<p style="text-align: center;">Reeth Evangelical Congregational Church The Revd David Levell 07582 575 815 www.reethecc.co.uk</p>	<p style="text-align: center;">Roman Catholic Fr John Bane 01748 822 175 www.stjosephsfx.co.uk</p>

Arkengarthdale Hub opens its doors at the heart of the community



Celebrations have been held in Arkengarthdale to mark the completion of its new community space. Primrose and Betsy Birks, aged six and three, untied the ribbon to officially declare the Hub open and welcomed more than 100 friends of Arkengarthdale to a tea party where they had the opportunity to see the facilities and to find out about the diverse range of activities that will be hosted in the coming months and years.



Located in St. Mary's Church, the Hub is a major boost to the community and will have a positive impact for residents and visitors alike, providing an inclusive space that will bring people together. After enjoying delicious strawberry teas, guests were invited to browse displays featuring the groups that will be using the Hub - from yoga, zumba, wreath making, coffee mornings,

quizzes and guest speakers to flora and fauna, there is something for everyone. During the afternoon, an interactive photograph trail for children took them on a journey of the church yard where they had to find pits with rubber stamps and take an impression to prove they had been there. For the older visitors, there was a history trail to discover five key points of interest about the church which was consecrated in 1820.

In addition, the recently formed Arkengarthdale Horticultural Society, who are volunteering with the upkeep of the church grounds, presented their vegetable plot and the Hub's 'Food Swap & Share'. This is a fantastic initiative where provisions such as home-grown vegetables, jams and chutneys can be donated and swapped.

Ian Bethune, volunteer at Arkengarthdale Hub, said "We have been overwhelmed with the number of people who attended our open event, and our thanks go to everyone who visited from near and far. The event was a fitting tribute to all the hard work that has been done to create this wonderful community space and it is clear by the fabulous turnout that the Hub is set to hold a special place in the hearts of many people as somewhere they can congregate and enjoy different activities. The afternoon could not have been better and it was made possible by an incredible team of volunteers who have stepped forward to offer their help and support. We are privileged to have such a wonderful community spirit in Arkengarthdale and the Hub will ensure this legacy continues and we hope it will become an important landmark in the Dale's future.

REETH AND DISTRICT GAZETTE LTD



delighted with the design and quality of the workmanship. The use of the facilities by the community will now be passed to a semi-independent group that will develop their use to suit the needs of everyone in the Dale. It is gratifying that there are plans for several exciting activities and the members of the church are more than happy to have the use of the

Tony Oldershaw, who project managed the alterations and extension to create the Hub at St. Mary's Church, said: "The completion of the community facility at St Mary's is the culmination of fifteen years of work in re-roofing the church, restoring the windows and ceiling and finally providing the Arkengarthdale Community with the space and associated amenities they can call their own - The Arkengarthdale Hub. St Mary's has for 200 years been at the centre of the community which has always actively supported the church. However, following the closure of the Methodist Chapel, and more recently the School in 2019, the community has been without anywhere to meet collectively. The church wanted to help and was very happy to initiate the finding of the external funding and to manage the creation of the internal space and the building of the new facilities, which include a flexible open space, kitchen and servery, mobility ramp, table and chairs, as well as a small extension housing an accessible toilet and a storage area. Everyone is

building increased to the benefit of everyone."

Huge thanks go to Mike Overton of Overton Architects (Ilkley) and Contractors Roebuck and Holmes (Huddersfield) and the many organisations and individuals who awarded grants or gave donations including: Richmondshire District Council/North Yorkshire Council (Community Investment Fund), The Parochial Church Council of the Parish of Swaledale with Arkengarthdale, Yorkshire Dales National Park Sustainable Development Fund, Garfield Weston Foundation, National Churches Trust, The Duke of Norfolk, Benefact Trust, The Congregation of St Mary's Church, Hudson House Community Company, Reeth and The Church of England Diocese of Leeds.

To find out about the events and activities taking place at Arkengarthdale Hub please follow the Hub's facebook page. Further information about booking the Hub is available by emailing arkengarthdalehub@gmail.com

Keld Resource Centre Forthcoming Events

17th Sept. An Afternoon with Bob Guy 14.00pm - 16.00pm: Keld Old School

Informal public talk with life-long Swaledale resident Bob Guy remembering his early years farming on Oxnop and his years as a builder in the dale. An open question and answer session will follow. Charge £7 pp. Afternoon teas will be served afterwards for donations to KRC.

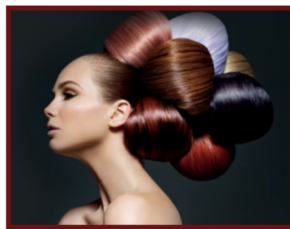
8th October: Upper Dales Mining Methods & Mechanisation in Swaledale 1500 - 1900's; 16.00pm - 18.00pm: Reeth Memorial Hall

Public talk by Dave Carlisle, assisted by Peter Roe, on the evolution of underground mining equipment and techniques, and improvements in the ore treatment methods including the extraction and use of other minerals found in the area. Charge £10 pp

12th Nov: Lichens of Upper Swaledale 13.00 pm - 16.00 pm Approx 1 mile

Led by Sue & Les Knight, includes introductory session in the visitor centre and local walk to identify and study specimens. Meet at Keld Resource Centre. Charge £7 pp

Full details and tickets available via Eventbrite, or Email helenguy47@gmail.com



Sarah Louise Olney

Mobile Hairdressing
Facials
Massage
Reflexology
Indian Head Massage
Cruelty free products
Cruelty free hair colour

Reeth 07875 926946

OPEN ALL YEAR ROUND, EVERYDAY

SWALEDALE WOOLLENS

MUKER-IN-SWALEDALE, RICHMOND NORTH YORKSHIRE



Celebrating 40 Years

The Quality is Legendary...
...The Choice is Endless.

TAKE HOME A PIECE OF THE DALES

Call into our shop in Muker Upper Swaledale and see what unique garments we have on display from hand knit cardigans, sweaters, hats, scarves & gloves to machine knit sweaters & cardigans for both ladies & gents. We also stock sheepskin rugs, slippers & gloves.

WE ARE OPEN EVERYDAY

Tel. 01748 886251

Email: mail@swaledalewoollens.co.uk
or visit our website where you can order online:
www.swaledalewoollens.co.uk

Bellerby Study Group

NEWS from Bellerby Study Group
for Autumn Term 2023

Meetings are on Wednesday
at 7.30pm in the Memorial Hall,
Church Street, Bellerby, DL8 5QL.

Talks are followed by refreshments
and a chance to chat.

The cost for this term will be £15 to
join as a member for the 8 talks
scheduled, or £3 for a single visit. Any
queries can be directed to Steve Akrill
on 07812 983283 or Chris Akrill on
07983 300336

On 27th of September, we look
forward to the start of the term, with
a talk about his Wheelchair
Adventures given by Bret Crossley.
Bret was a successful motorcycle racer
until suffering spinal cord injury during
'massive' crash in 2006. He is now a
Paratriathlete in GB Talent Squad.

Steve Akrill

Cover photograph by Mike Joiner:
Rampsholme Bridge near Muker

The Gazette is online:
www.2dales.org.uk



SWEEPIN' THE DALES CHIMNEY SWEEP

YOUR LOCAL TRADITIONAL
CHIMNEY SWEEP
NACS & HETAS qualified & registered

We set ourselves very high standards
and take every care in your home

We offer a comprehensive service
All types of chimneys swept to relevant BS Std.
Bird guards & cowls, etc. supplied & fitted
Advice freely given, problems solved
Carbon monoxide detectors
Chimney pots replaced

01765 688078
www.sweepinthe dales.co.uk

Stove Refurbishment
Stove servicing and repair
Solid fuel stove installations
Stainless steel flexible linings
Stainless steel rigid flue systems
Only high quality components are used

HETAS qualified & registered installer

STOVE INSTALLATION

HEATING THE DALES SOLID FUEL INSTALLATION SERVICE



Orchard Caravan Park

Idyllic setting in the market town of Reeth, nestled next to the river Swale
in the heart of beautiful Swaledale.
Orchard Caravan and Camping Park is the ideal location for
a tranquil and relaxing break, or for those who seek an active
holiday to enjoy walking and biking.

Static Caravan Hire
Camping pod hire
Touring, motorhome & Camping welcome

Email: Office@Orchardcaravanpark.com
Facebook: @Orchardcaravanparkreeth

“Where the Wind Blows”

Yore Mill Gallery located at Aysgarth Falls hosts an exhibition of Liz Salter's paintings from 1st September through to the end of October.

Liz has always painted. A career in Theatre Design was followed by teaching textiles and embroidery at colleges in Yorkshire before taking up painting full time and gaining an MA in Fine Art at the University of Leeds.



Liz exhibits widely in Britain and in Ireland and has received the award of “South Yorkshire Artist of the Year”. Liz’s paintings are lively and energetic evocations of the many moods of our wild hills and terrain. Her inspiration comes from walking and exploring wild and rugged landscape. Always looking, she often stops and draws, seeking to convey the feel of the place, the changeable weather and winds as well as the smell of the earth. She is attracted to the energy and wildness of the landscape and to the sense of its history and past being ever present. The paintings are made in her studio.

She studies her sketchbooks looking for the drawings that speak of the experience. Then the adventure begins, exploring possibilities much as she explored new terrain. Images are built up on paper maybe using collage, liquid graphite, or ink. Layers of thin and thick acrylic paint are intermingled with line. Liz draws on her memories as much as the sketches, remembering the scents on the wind and the changing light, vivid recollections of the experience.

The painting becomes a visual equivalent for that experience with the colour reflecting her scrutiny and observation of the changes in the shape of the weather and the light on the land. Liz often ponders and asks herself, is the painting finished? This is only achieved when

it speaks back to her of the remembered atmosphere and sense of the place recreating a very special and vivid experience for her. She says “I feel that my paintings are optimistic and show my deep appreciation of the landscape, and a profound respect for nature. I hope they convey a sense of the living, breathing landscape”

“Where the Wind Blows”
An Exhibition by Liz Salter
September 1st 2023 - October 31st 2023
Yore Mill Gallery, Church Bank Aysgarth
DL8 3SR
www.yoremillcraftshopandgallery.co.uk
Tel: 01969-662829

ARK HUB QUIZ

Join us for the first

Arkengarthdale Hub Quiz
Night

Saturday 14 October
7.30

St. Mary's, Arkengarthdale

Includes supper - Bring a
bottle

Teams/Tables of 6

Tickets £12 from Reeth
Post Office

Proceeds to The Hub and
St. Mary's

3D Cross-Stitch



The Nutmeg Gallery

Dozens of models on display together with kits,
accessories and the full range of DMC stranded cotton.
Normally open Mon-Fri, and Saturday afternoon.

Reeth Dales Centre, Off Silver Street,
Reeth, DL11 6SP, 01748 884926



www.3dcrossstitch.co.uk

T.A.R. Longstaff

Mobile Hydraulic hose
repairs in Reeth and
surrounding areas,
anywhere anytime.

Also mobile on site
welding.

Tel Percy on
07889725349.

SWALEVIEW
PARK

Swaleview Park Summer Offer!

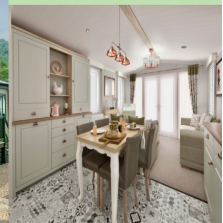
- ☀️ £5,000 reduction on new caravans & lodges
- ☀️ Free pitch fees until 31/12/2024 on new purchases by 30/9/23

To view contact: info@swaleviewpark.co.uk

01748 823106 / 07736 820283

www.swaleviewpark.co.uk

Swaledale, Yorkshire Dales (non-residential holiday
park, 12 month holiday home licence)





Sustainable
Swaledale

Sustainable Swaledale

Fruit and veg beds at Reeth Surgery

Reminder that the fruit and vegetables grown in the raised beds at the side of Reeth Surgery **are available** to everyone to take. There have been plenty of lettuce leaves, rocket and herbs to harvest all summer and hopefully beans will be becoming available. We are always looking for more volunteers to help look after the beds, join the watering rota and encourage people to use the produce. If you would like to get involved, please contact us.

North Yorkshire Community Awards: short-listing

Sustainable Swaledale is pleased to announce that it has been short-listed for the **North Yorkshire Community Awards: Caring for the Environment award**. The award is awarded to groups who have demonstrated a commitment to delivering community based initiatives that protect, restore and enhance our natural environment, helping to tackle the causes and impacts of climate change or supporting nature to thrive. All nominations are judged by an independent panel. Information on the various award categories at: <https://tinyurl.com/3v9rvbbu>

The group was honoured to be shortlisted in July for the Campaign

for National Parks (CNP) - Changemaker of the Year award for work on various projects but lost out to groups campaigning against sewage spills in Windermere and supporting the right to wild camp on Dartmoor.

Oceans warning up

Ocean surface temperatures hit the highest ever recorded temperature of 20.96 C in the first week of August according to the Copernicus climate modelling service. The high temperatures are attributed to the impact of climate warming and the El Niño weather phenomena and temperatures are expected to rise further. Warmer oceans have less ability to absorb carbon dioxide; contribute to raised sea levels; influence weather patterns including more powerful storms; and impact on marine wildlife.

Source: Guardian 4/8/2023

<https://tinyurl.com/3s3ecuab>

Seed collection day

The group will be running a **tree seed collection day on 23rd September**. Local tree seed is collected with the permission of landowners, processed and once germinated, potted on into root trainers. The tree seedlings are nurtured for a couple of years and will finally be planted out within Swaledale and Arkengarthdale. We will be meeting at Rampsholme Bridge, Muker at 10am. If you are interested in joining us, email info@sustainableswaledale.org for joining instructions. We will be running a construction day for our tree nursery shortly.

REETH AND DISTRICT GAZETTE LTD

SOS - Save our Swale

Presentations for the July **Save our Swale** meeting plus news coverage can be found on their facebook page:

www.facebook.com/saveourswale

You can keep in touch via their twitter link: #saveourswale.

Rishi Sunak, MP for Richmond, sent a letter supporting the campaign.

Travel disruption set to worsen with climate change, warns government adviser

BBC website article on how rail and road travel is increasingly likely to be affected by flash floods, heatwaves and landslides as a result of climate change. Road builders and rail companies are looking to technology to better predict extreme weather incidents and exploring new building methods to produce more resilient infrastructure.

Source: BBC website

<https://tinyurl.com/mrabc5df>

The Trouble with Sheep

Radio 4 programme on the challenges facing upland sheep farmers. Catch up on BBC Sounds: <https://www.bbc.co.uk/sounds/play/m001p1q6>

Clickable links available via the Sustainable Swaledale website

Margaret

Sustainable Swaledale Group

Find out more and join in

Meeting: first Thursday of the month at 7pm. Please contact us for venue details.

Email: info@sustainableswaledale.org

Phone: the Secretary on 01748 886 381

Facebook Group:

Sustainable Swaledale

Website: www.sustainableswaledale.org

where you can sign up to our free newsletters, and choose to support us as a member for £10 (£5 concessions) per year.

M. GUY - PLUMBING

For all your plumbing requirements

AGAS & RAYBURNS SERVICED

kathrynguy@designermakersmarket.co.uk

Tel: 01748 - 825640

CHARMING OLD COTTAGE IN THE CENTRE OF REETH (sleeps 6+)

Open fire & background heating.

Fully fitted kitchen, dishwasher, fridge/freezer.

2 bathrooms, 2 double bedrooms, 1 twin bedroom & attic play area/fourth bedroom with 3 single beds.

Private, secure, rear courtyard area.

Dogs welcome.

Contact Denyse on 01325 722786 or

e-mail denyse00@btinternet.com

www.holidaycottageswaledale.com



Reeth Memorial Hall

Saturday 9th Sept - Chris Wood - Singer songwriter, guitarist and winner of 6 BBC Folk Awards, "He's good, quite probably the very best we have today, and we need him more than ever" (fRoots Magazine). Tickets **£16** (£18 door).

Saturday 30th September - Megson - Comprising Debs (vocals, whistle, piano accordion) and Stu Hanna (guitar, mandola, banjo). Megson have been described by The Guardian as "the most original duo on the British folk scene." Tickets **£15** (£17 door).

Saturday 14th October - John Tams makes a rare solo appearance. Just a few tickets left. Tickets **£20** (unlikely to be any on the door).

Thursday 19th October - Sean Lakeman & Kathryn Roberts have twice won the BBC Radio 2 Folk Awards 'Best Duo' title. Mixing traditional songs with self-penned material, they cover such subjects as wicked mermaids, Norwegian legends and a lonely whale. Tickets **£18** (£20 door).

Tickets from Reeth PO or phone John Little (01748 884759) or visit www.reethmemorialhall.co.uk - tickets ½ price u16s. All concerts 8pm.

THE HEALING COLLECTIVE

Encouraging health and well being with a range of therapies including

- * Reiki * Counselling * Bach Remedies *
 - * EFT (tapping) * Indian Head Massage *
- Treatments for animals also available.

Coach House, Berry's Farm Shop & Café,
Swinithwaite, DL8 4UH. t.0845 474 2383

info@healingcollective.co.uk
www.healingcollective.co.uk



M.W Waste Services

Environmental & Drainage Specialists

Septic Tanks Emptied & Cleaned
Blocked Drains Cleared Fast
Grease Traps & Interceptors Emptied
Soakaways Rebuilt & Repaired
Gully Emptying & Street Cleaning
Refuse Collection
Septic Tanks Installed
High Pressure Drain Jetting
Mobile Steam Cleaning
Sewage Plant Maintenance
Industrial & Domestic Work Carried Out

Low Hang Bank Depot
Melsonby
Richmond
North Yorkshire
DL10 5NQ
Tel: 01325 377860/377850
24/7 Call Out
[Http://www.mwwaste.co.uk](http://www.mwwaste.co.uk)

Clear Your Blocked Drains Fast With Our High Pressure Jetter
Free Quotes & Estimates

VICTORIA DESIGN GROUP LTD
Consulting Civil & Structural Engineers

Consulting Structural & Civil Engineers

Structural Surveys
All design work undertaken
whether domestic or commercial,
large or small

Telephone: 01748 886717
Email: office@vdg.co.uk
Website : vdg.co.uk

R.L.G

Property Services

- Paving • Groundworks • Decorating
- Pressure Washing • Garden Maintenance
- General Repairs & Improvements  

0737 607 3816
01748 884 321

Email: Ryang2190@gmail.com



Marrick Priory
Outdoor Educational and Residential Centre

Enhancing life skills through adventure

Cook Required

At Marrick Priory near Reeth

Shift pattern - morning 8am till 1pm or evening 4pm till 8pm

To provide a cooked breakfast, packed lunches and evening meals for residential groups

Additional cleaning duties may be available

Good rates of pay, meals provided and excellent working conditions..

Own transport is necessary

Please contact the Head of Centre or a member of the team on 01748 884434 or email office@marrickpriory.co.uk

Scouts
Swaledale



Autumn Term Start Dates:

Scouts Monday 11 September

Cubs Tuesday 12 September

Volunteers are needed to help with our Scout Meetings.

All you need is enthusiasm, a sense of purpose, and a willingness to work with our young people. No previous experience is necessary.

If you are interested in joining our small friendly and informal team, would like to come and see what is involved at a meeting or would like further information about this rewarding experience, please contact:

Nick Caldwell, Group Scout Leader on 01748 884340.

We are also looking for a **Beavers' Leader** for our younger members.

More Blues in the Pews

After another successful show at St Mary's Church, Richmond which featured guitarist Greg Brice, Found The Note Blues and Roots Club presents The 20ft Squid Blues Band on Friday 15 September.

John Meara, of Found The Note said, "I'm delighted that the boys have agreed to play for us. They're a great bunch of musicians and it will be a fantastic show.



Tickets are £8 and available from Castle Hill Bookshop, Richmond Blues Night Record Store, 85 Frenchgate, Richmond or foundthenote@yahoo.com

John Meara

Hudson House

Your valuable community asset
Rooms for hire

Suitable for meetings, lectures, talks, training or social events.

The Meeting Room - maximum of 30 people.

The Meeting Place (evenings only) - maximum of 10 people.

Access to PCs, Internet, printer, photocopier, laminator and kitchen facilities.

The Orchard Gallery for hire
Suitable for exhibitions of paintings, photographs and other artwork.

Own entrance through the garden.

Sales can be handled for you.

For prices (special rates for community use), bookings or more information please contact Jill May on 01748 884 485 or admin@hudsonhouse.info

Remedial Massage

*musculoskeletal conditions & injuries,
headaches, stress and anxiety*

Manual Lymphatic Drainage

lymphoedema, post-surgery

Jennifer Thursfield NAMMT
MLDUK CNHC

Tel: 07889 546608 • Based in Richmond
jtremedialmassage@gmail.com
www.jtremedialmassage.co.uk



KARL LONGDEN PLUMBING

Reeth, North Yorkshire

karllongdenplumbing@yahoo.com

Tel. 01748 889951

Mob. 07969 329893

24 HOUR CALL OUT SERVICE





two dales bakery
reeth

ARTISAN BAKERY & CAFÉ

Delicious breads and pastries
Food served all day including vegetarian/vegan options
Well behaved dogs welcome
Visit us at the Reeth Dales Centre,
Silver Street, Reeth,
North Yorkshire, DL11 6SP
Please see our website
for current opening times
www.twodalesbakery.co.uk
☎ 01748 905001

Support the Reeth & District Gazette

Order your printing from us and we will credit 10% of the value of your order to the Gazette account at no extra cost to you!

Quote Gazette when ordering

Booklet Printing

- ✓ Reports
- ✓ Manuals
- ✓ Brochures
- ✓ Catalogues
- ✓ Newsletters



Saddle Stitched - Perfect Bound - Wire Bound

From your computer files or hard copy

THE OLD TEMPERANCE BOOKSHOP

Reeth, Richmond, DL11 6TE
Tel. 01748 884185

Christian books & cards, Fairtrade crafts and food



Beside the village green in Reeth, we are 50 yards up from Reeth Evangelical Congregational Church

Opening times:
1.30pm - 4.00pm Thurs, Sat
10.30am - 4.00pm Fri
CLOSED from Tues. 12th to Thurs. 21st Sept.

NCR set Printing

- ✓ Invoices
- ✓ Estimates
- ✓ Order Forms



Fast Turnaround - Padded - Loose Sets



Reflections PhotoGraphic Services

Tel: 01833 690733
www.refprint.co.uk
email: sales@refprint.co.uk

SWALEDALE

'POTTING ON THE NEXT GENERATION IN THE TWO DALES'



PLAYGROUP

Find us on Facebook – Search Seedlings Reeth

REGISTERED CHARITY No- 1045715

Swaledale Seedlings playgroup

'Stay and Play' Sessions

Mondays at Gunnerside Village Hall
& Thursdays at Reeth Memorial Hall
9.30am until 11:25am

Open to all children under the age of 5

£2 per child per session

Pop into a session or message us on Facebook
for further information

STURDY TRAVEL

INDEPENDENT TRAVEL SPECIALISTS

Now at 1 Golden Lion Yard
Market Place, Leyburn DL8 5AS
For all your travel needs, home and abroad

Call: 01677 422826

Email: robert@bakewelltravel.co.uk



Part of Bakewell Travel



ATOL No. 10425

S.J.R Plumbing Services

For all of your domestic
Plumbing requirements.

C & G/Advanced C & G Qualified
Reliable With Very Competitive Rates

Based in Reeth

01748-884036

Or 07977-297563

HARKERS COACHES



Hill Top Garage, Reeth

Tele: 01748 884533

Pauls Mob: 07703 559959

**COACH,
PRIVATE
HIRE &
GARAGE**

Coach, Mini Bus and
private taxi hire
General vehicle
maintenance
including services,
tyre supply, fitting
and balancing.

REETH AND DISTRICT GAZETTE LTD

Christian Aid Bric-a-Brac Stall

The Christian Aid Committee held a Bric-a-Brac Stall on Friday 21st July. It raised £350.80. Thank you so much for your contributions, help and support.

Your support will help create long-term change for people living in poverty. The impact of the recent Cyclone Freddy in Malawi has been devastating. Floods have washed away crops, over 500,000 people have been displaced and hundreds have lost their lives. In South Sudan, clashes between the Sudanese Armed Forces and the Rapid Support Forces have displaced millions of people. Christian Aid works with local partners to enable people to build back their lives. More details of the families who have been helped can be seen on the Christian Aid website <https://www.christianaid.org.uk/>

Thank you for your support for the work for Christian Aid.

Pauline Oldershaw, Secretary Upper Swaledale Christian Aid Group

FRIENDS' SCHOOL AT REETH TRUST Charity Number 529603

Grant Applications for the Academic Year 2023-24

Small grants are available to local young people, under the age of 25, attending **full-time** further education, towards the cost of their studies. (Not transport costs).

Applications need to be received before

Monday 25th September.

For an application form, please contact:

Friends School at Reeth Trust Secretary
By e-mail to gaynorhemming@gmail.com

or by post to

Gaynor Hemming, 20 King St, Barnard Castle.
Co.Durham, DL12 8EP



Home Run

Pet sitting, House sitting, Dog walking

I offer a friendly, personalised pet and house sitting service in and around Swaledale.

Nicola – 07866 336924
nicola@homerundogsitting.co.uk
www.homerundogsitting.co.uk




PEST CONTROL


Don't let pests become a problem, call us right away for a professional, reliable and discreet service.

- Rats / Mice
- Wasps / Insects
- Nuisance birds



 SCAN ME

 07818 836527

 www.yorkshiredalespestcontrol.com

REETH AND DISTRICT GAZETTE LTD



**SWALEDALE
MOUNTAIN
RESCUE
TEAM**



4 Incidents this edition

On average we respond to between 40 to 50 calls each year.

In an emergency DIAL 999 ask for the POLICE then Mountain Rescue / Cave Rescue / Mine Rescue / Flood Rescue

Charity Commission Registration No: 1201870, providing Mountain and Cave Rescue in the Northern Yorkshire Dales

The team is made up of highly trained volunteers available, 24/7 in any weather, any time.

Mountain and Cave Rescue Team

Incidents July 9th to 9th Aug

Incidents 25,26 & 27: 21-23/07/2023: We provided rescue cover for the annual Ard Rock Mountain bike event. It was wet, very wet!

Incident 24: 10/07/2023: Called by Cleveland Mountain Rescue Team to assist them the with the evacuation of an injured walker.

We now have stock of our 2023 neck tubes. These are available from the Kings Head Gunnerside or via eBay, just search for **SWALEDALE MRT Neck Tube, 2023 New design.** Charity Fundraiser for SMRT. or drop us a message via our Facebook page, email us at secretary@swaledalemrt.org.uk or use our online contact form on the website, swaledalemrt.org.uk

Responding to incidents at the Ard Rock





**Grinton Book
Exchange**

Open Daily

All proceeds towards
the upkeep of the
building

R. & W. GIBSON & SON Ltd.

**CERAMIC WALL
& FLOOR TILERS**

SHOWROOM NOW OPEN

Monday - Friday: 9.00am - 4.30pm

Saturday: 10.00am - 1.00pm

(or by appointment)

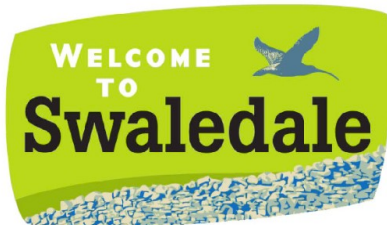
At Borough Road,
Gallowfields Trading Estate

DL10 4SX

Tel. 01748 - 822682 (Home)

Tel. 01748 - 821909 (Showroom)

"We cover the Dales"



S A B F

**Swaledale & Arkengarthdale
Business Forum**

Members, get assistance to
enhance or update your entry

Non-Members, send your
details for a basic entry

**visit our website
www.swaledale.net**

Packed with useful information for
visitors and locals alike, including
a comprehensive services directory

Martyn Leaver

Dry Stone Waller

- Farm or domestic work
- Drystone or facemalling
- Fence repairs and paving
- Misc jobs etc

**Thwaite 01748 886025
Mob: 07971 456 043**

Hindsight

Accountants LLP

Tony Fava

- Bookkeeping, Payroll and VAT Returns
 - Annual accounts and tax returns
 - Company Formations

11 Finkle Street, Richmond, DL10 4QA

Tel: 01748 822049

Email: tonyfava@hindsightaccountants.co.uk

**The Arts Society
Wensleydale presents
"Packing Up the Nation"**

**Saving London's Museums and
Galleries in the Second World War**

This is the gripping and sometimes hilarious story of how a band of heroic curators and eccentric custodians saved Britain's national heritage during our Darkest Hour. As Hitler's forces gathered on the other side of the Channel to threaten these islands, men and women from London's national museums, galleries and archives forged extraordinary plans to evacuate their collections to safety. Utilising country houses from Buckinghamshire to Cumbria, tube tunnels, Welsh mines and Wiltshire quarries, a dedicated team of unlikely heroes packed up their greatest treasures in a race against



time during the sweltering summer of 1939, dispatching them throughout the country on a series of secret wartime adventures, retold by Dr Caroline Shenton in this talk.

The lecture will take place at Tennants Garden Rooms, Leyburn, DL8 5SG on Tuesday 26th September at 2pm. Everyone welcome, guests £10.

Alyson Jones

J. N. & E.
Capstick

INSURANCE CONSULTANTS

A local company small enough to care, but big enough to compete

FARM - COMMERCIAL - HOME - MOTOR INSURANCES

Kirkby Stephen 017683 72285 - Sedbergh 015396 20124

Email: sales@capstickinsurance.co.uk

www.capstickinsurance.co.uk

CIR WINNER
**COMMERCIAL
INSURANCE
AWARDS 2017**
BROKER CLAIMS TEAM
OF THE YEAR

50
YEARS
TRADING FROM 1968 TO 2018

*J N & E Capstick Insurance Consultants are authorised and regulated by the
Financial Conduct Authority*

**YORKSHIRE FOOT
CLINICS**

Podiatry/Chiropody

Alex Kravchenko MChS, BSc Pod (Hons)

**Nail cutting, callus, corns &
ingrowing nails**

**All treated in the comfort of your
home**

Tel. Richmond 850020

Or Hawes 667449

Always insist on state registered



**LIBERTY
FABRIC**

Quality fabrics for quilting,
dressmaking, etc., sewing kits
& accessories, plus wool/yarn.

Abbotstone House Collection,

Little Shop on the Hill, Hawes.

☎ 07921 058803/01969 667988

Join the team at Hudson House

Together we keep our Visitor Centre in Reeth open during the winter months.



We start back in November with training taking place during October.

No experience necessary.

Whether you are new to the area or have lived here for a long time, we would love to have you as part of our team.

Please get in touch for a chat.

Karen Campbell 07977 133764 Email: karencampbell2018@gmail.com

CALVERT & JENKINSON LTD

— Building Contractor —

All Aspects of building work carried out from renovation to new builds, plastering to roofing.

www.cjbuildersltd.co.uk

cjbuildersltd@gmail.com

Andrew: 07837955869

Ryan: 07968463840



Swaledale Footcare

Meg Squires MCFHP MAFHP

Clinic Visits at Thornborough Hall Leyburn or
Home Visits Including:

Toenail Cutting

Corn Treatment

Removal of Hard Skin and Calluses

Treatment of Thickened and Fungal Nails

Phone : 01748 884795 or Mobile: 07929065602

Email meg.e.squires@gmail.com

Member of the British Association of Foot Health Professionals



REETH POST OFFICE

More than just a Post Office
Its a 25+ miles round trip to
the big shops.



SERVING OUR COMMUNITY

www.reethpostoffice.co.uk

SWALE HAIR SPA



LOOK GOOD

FEEL GREAT

BE-WELL.

We are open **Tuesday- Friday**, plus every 5th
Saturday.

Call us on: 01748 884627
Email us: info@swalehairspa.com
www.swalehairspa.com

MICHAEL GUY ELECTRICAL

FULLY QUALIFIED ELECTRICIAN

Over 20 years experience working in
the dales in all areas of
electrical work.

Some of my services include:

Complete rewires | Electrical installation
condition reports | Electrical vehicle
charging points | Additional & alterations
to socket & lighting points |

Replacement of storage heaters to modern
eco panel heaters.

Contact Michael :

T: 01748 886097 | M: 07980130017

Mail: info@michaeltguyelectrical.co.uk

Website: Michaelguyelectrical.co.uk

APPROVED ROINTE HEATER INSTALLER
NICEIC APPROVED CONTRACTOR

REETH AND DISTRICT GAZETTE LTD

Leyburn u3a Group September Meeting

The next meeting is on Friday September 15th - Poetry by John Anderson.

Doors open at 10.00am at the Leyburn Arts & Community Centre, Richmond Road, Leyburn. DL8 5DL. Talk starts 10.30am.

Meetings are held the third Friday of every month. Visitors and new members always welcome. Annual Membership is just £12 or £20 for two people at the same address. For details contact Sue Mellish on 01748 850 471 or email susiemellish@gmail.com

Future Meetings: Oct 20th Kiplin Hall, Nov 17th History of the National Parks.

u3a
learn, laugh, live

John Sutton

Rose Cottage

Just off the village green in Reeth

Sleeps 4

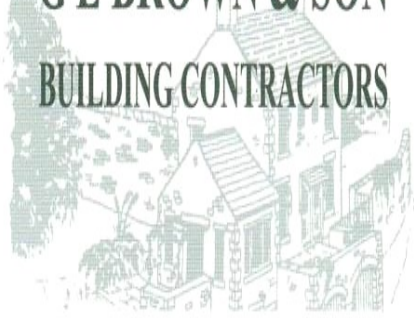
Dogs welcome

Tel 01964 562239

Email: rosecottagereeth@gmail.com

G E BROWN & SON

BUILDING CONTRACTORS



All Building Work Carried Out
Damp Proof Course & Timber Treatment
Specialist Joinery Work
Work carried out by time-served qualified craftsmen

Email: gebrownson@f2s.com
Telephone: 01748 886356

A.J. CLACHER LTD

Established 1961

PLUMBING & HEATING ENGINEERS

- Gas, oil and solid fuel central heating installations
- All aspects of plumbing and gas installations
- Boiler servicing and repair • Landlord Gas Safety inspections
- Bathroom installations and Plumbing • Heat Pumps and Solar Heating

Unit 38 Forge Way, Cleveland Industrial Estate, Darlington DL1 2PB
Tel. 01325 468372 • E-Mail info@ajclacher.co.uk
www.ajclacher.co.uk



Lady Interior Decorator

Painting & Decorating, Competitive rates
Established 30 Years: Based in Richmond
Free estimates, Friendly advice, Est 29 years

Call Yvonne on: 07838378836

Email: yvonesdecor@hotmail.co.uk

REETH AND DISTRICT GAZETTE LTD

Fund Raiser for St Mary's Muker

As a fundraiser for St Mary's, Muker, we are having a competition to guess how many miles Caroline and Linzi cover in the month of September!

Entries/donations can be emailed to Judith Dower, 01748 886366, judith@catholecottages.com, or given to Chris and Dora Watts, dora.watts@btinternet.com.

The winner will receive a £10 gift voucher, kindly donated by The Old School Art Gallery & Craft Centre, Muker. Bank details: Santander, Parochial Church Council of St Mary's Muker, acc 34115705, sort code 09 01 56.

Thanking you in advance for your support,
Judith Dower



We're Recruiting!

Quality Lead

Water Treatment Operative

Permanent, full-time roles

Production Operatives: Hawes & Ripon

Full / part-time / job shares considered.

Front of House Team & Kitchen

Assistants

Full & part-time positions at our Visitor Centre in Hawes. Working across 5 days (no evenings)

Student & Seasonal Vacancies

Front of house and retail positions available

Excellent rates of pay and staff benefits.

Find out more at

wensleydale.co.uk/work-with-us

The Charles Bathurst Inn ARKENGARThDALE

Outstanding fresh food served in a warm & friendly atmosphere.

19 en-suite bedrooms with amazing views.
Available for dinners, weddings & meetings.



- Open Lunchtime 12 – 2.30pm Tuesday – Sunday (Closed Monday lunch*)
- Evening Meals every night 6 – 8.30pm
- *Open Bank Holiday Mondays

FOR FURTHER DETAILS OR TO RESERVE A TABLE

Telephone: 0333 700 0779 Website: www.cbinn.co.uk

The Punch Bowl Inn

Outstanding fresh food served in a warm & friendly atmosphere with stunning views of Swaledale.



- Open Lunchtime Tuesday – Sunday (Closed Monday lunch*)
- Evening Meals Mon - Sat 5.30 – 8.30pm, Sun 5.30 – 8pm
- *Open Bank Holiday Mondays

FOR FURTHER DETAILS OR TO RESERVE A TABLE

Telephone: 0333 700 0779 Website: www.pbinn.co.uk

Diary Dates

September

Sat 2nd Sept - Preloved sale
Gunnarside Village Hall 11am-4pm
refreshments available

Sum 3rd Sept - Rehearsal resume
for Swale Singers, 3pm Reeth
Memorial Hall

Wed 6th Sept - Muker Show

Sat 9th Sept - Chris Wood - Reeth
Memorial Hall 8pm

Wed 13th Sept - Reeth Indoor Bowls
resumes, Reeth Pavilion, 3pm

Thurs 21st Sept - Flu vaccinations
Reeth Memorial Hall 9.30-11.30am

Thurs 21st Sept - The Yorkshire
Story Teller at Arkengarthdale Hub,
7.30pm

Thurs 28th Sept - Gunnarside TLC,
7.30pm a talk at Gunnarside Village
Hall by Helen Guy on Women's role in
the Dales during WW1 and WW2

Thurs 28th Sept - Keld Resource
Centre with Low Row and Keld URC
Study Day

Sat 30th Sept - Megson - Reeth
Memorial Hall 8pm

Thurs 28th Sept—Macmillan
Coffee Morning Gunnarside Village
Hall from 10.30am until 12pm

Sat 30th Sept - 10am to noon,
Harvest Coffee Morning & 6.30pm,
Harvest Supper, Reeth Evangelical
Congregational Church

October

Sat 7th Oct - Memorial Concert with
Muker Silver Band and Swale Singers,
Gunnarside Chapel, 7.30

Sat 14th Oct - John Tams - Reeth
Memorial Hall 8pm

Sat 14th Oct - Quiz night
Arkengarthdale Hub 7.30pm

Thurs 19th Oct - Sean Lakeman &
Kathryn Roberts - Reeth Memorial Hall
8pm

Thurs 19th Oct - Gunnarside TLC
Annual Quiz, 7.30pm Gunnarside
Village Hall

November

Sat 4th Nov - 4th Sam Lewis - Reeth
Memorial Hall 8pm

Thurs Nov 16th - Guy Davis - Reeth
Memorial Hall 8pm

Thurs 23rd Nov - TLC Gunnarside
Wreath Making, Gunnarside Village
Hall 7.30pm

Market Place

Bosch Electric garden shredder,
brilliant for shredding woody material.
£25, Jackie 07885 498676

Langthwaite - Arkengarthdale

RED LION INN

Free House
Real Ales – Bar Snacks
Books & Maps
Tel. 01748 884218

Bellegreen Holiday Cottage

Overlooking Reeth Green
Sleeps 7 in 4 bedrooms

www.bellegreen.com
Keith@bellegreen.com
0115 922257

SWALEDALE MUSEUM & SHOP

OPEN Wednesday to Saturday 10.00 am to 5.00 pm



Serving food between 12pm & 8pm everyday

Free to join loyalty scheme

No Table Reservations

Amazon, BT Sports & Sky Sports on 3 TV's

Pool Table & Dart Board

Pet Friendly

Monthly Quiz

Occasional Live Music

Warm Welcome

Cask Marque accredited & CAMRA discount

www.thebuckreeth.co.uk

Tel 01748 884 545

Email stay@thebuckreeth.co.uk

36th Hunton Steam Gathering

9th & 10th September 2023



Vintage and Classic Vehicles
Fair Organs, Steam Gallopers, Fairground Rides
Steam Ploughing & Vintage Working Demonstrations
Craft, Food & Trade Stalls

Ploughing Match (Sunday) & Falconry Display
Arena Attractions and much more for all the Family...

Entry: Adults £10, Children £5, under 5yrs FREE
Caravan & Camping | Bar & Catering | Free Parking

Wensleydale, North Yorkshire, DL8 1QF

For more information and tickets go to
www.huntonsteamgathering.co.uk

