

REETH & DISTRICT GAZETTE

ISSUE NO. 271 JANUARY 2019



© www.sandracockaynephotography.co.uk

*Your local news magazine
for the Two Dales.*

PRICELESS

First Thoughts . . .

Growing up in that fine city of Kingston Upon Hull, I remember being intrigued by the number of houses in the neighbourhood which had a low wall around the front garden with lots of little stumps of iron along its length. I later found out that all the railings had been cut off during the Second World War to 'help the war effort.'

Many years later I read that the nation had been duped. Rather than being of any use, most of these railings had been dumped as the recycling process was too expensive. But the government kept quiet about this and allowed the collection of railings to continue to make people feel they were helping with the war. In effect, it was little more than a propaganda exercise.

Fast forward to the present day and it would seem that little has changed - unless it be for the worse. Whether it is the Government spouting out some thing or other, or opposition parties - do we really trust them anymore? (If indeed they were ever trusted in the first place.)

I suppose it is nothing new. The early 1980s might have seen the rise of the spin doctors, but they were not a modern phenomenon; For centuries people have tried to influence those in power for their own ends.

And over the years, numerous lies - sorry, 'terminological inexactitudes' or 'economies with the truth' - have been propagated: George Washington didn't chop down the cherry tree; Van Gogh didn't chop off his ear and send it to his girlfriend; the Titanic wasn't unsinkable; smoking is bad for you and addictive after all; things weren't under

control after the Chernobyl explosion; Saddam Hussein didn't have any WMDs; Bill Clinton didn't smoke the cigar; and David Cameron was a quitter. Oh, and don't worry about climate change - it's not happening. (What does Sir David Attenborough know anyway?)

So, where is this rambling going? Nowhere, really. I just had a column and a bit to fill, which I have now done.

MAC

SWEEPIN' THE DALES CHIMNEY SWEEP

YOUR LOCAL TRADITIONAL
CHIMNEY SWEEP
NACS & HETAS qualified & registered

We set ourselves very high standards and take every care in your home

We offer a comprehensive service

All types of chimneys swept to relevant BS Std.
Bird guards & cowls, etc. supplied & fitted
Advice freely given, problems solved
Carbon monoxide detectors
Chimney pots replaced

01765 688078
www.sweepinthedales.co.uk

Stove Refurbishment
Stove servicing and repair
Solid fuel stove installations
Stainless steel flexible linings
Stainless steel rigid flue systems
Only high quality components are used

HETAS qualified & registered installer

STOVE INSTALLATION

HEATIN' THE DALES SOLID FUEL INSTALLATION SERVICE

REETH AND DISTRICT GAZETTE LTD

GAZETTE MANAGEMENT TEAM

Chairman: **James Alderson**

Greenways, Grinton, Richmond
DL11 6HJ

Tel: 01748 884312

E-mail: chairman@reethgazette.co.uk

Secretary: **Sue Alderson**

Holme View, Low Row, Richmond,
DL11 6PE

Tel: 01748 886292

E-mail: secretary@reethgazette.co.uk

Editor: **Martin Cluderay**

Reeth Post Office, Reeth, Richmond
DL11 6SE

Tel: 01748 884201

E-mail: editor@reethgazette.co.uk

Treasurer: **Andrew Bedford**

Glory Be, Blades, Richmond, DL11 6PS
Tel: 01748 886974

E-mail: treasurer@reethgazette.co.uk

Subscriptions: **Elsie Whitehead**

5 Place Hill, Reeth, Richmond,
DL11 6SD

Tel: 01748 884132

E-mail:

subscription@reethgazette.co.uk

Distribution: **Trevor Brown**

The Cottage, Healaugh, Richmond,
DL11 6UA

Tel: 01748 884111

Published by

The Reeth & District Gazette Ltd.

Company Number: 06541854

c/o The Company Secretary

Andrew Bedford, Glory Be, Blades

Richmond, North Yorkshire DL11 6PS

Tel./Fax: 01748 886974

E-mail: treasurer@reethgazette.co.uk

No material may be reproduced in whole or in part without permission. Whilst every care is taken for accuracy, the publishers cannot be held legally responsible for any errors or opinions in articles, listings or advertisements.

ADVERTISING

For information on advertising and prices, please contact the treasurer.

For advertising copy, please contact the editor.

The editor reserves the right not to publish any advert or article considered to be inaccurate or misleading

All articles or items for inclusion should be sent to the editor (E-mail: editor@reethgazette.co.uk) or left at Reeth Post Office.

Posting The Gazette

If you are posting a copy of this Gazette to a friend or relative, please note that it is Large Letter size and will cost £1.26 second class, or £1.40 first class.

Gazette Deadlines

The deadlines for the next two months are:

February issue: January 10th

March issue: February 10th

Cover Picture

FireStorm

by

Sandra Cockayne

PLEASE NOTE: We cannot guarantee that items submitted close to or on the deadline date will be included. Quite often the Gazette is almost finished by that date, so the earlier items are submitted, the better.

BEAR COTTAGE INTERIORS

Rustic Country Style Design



*Curtains & Blinds, Fabric, Furniture,
New Interiors and Gifts*

The Cattle Market, Market Place, Hawes, DL8 3RD Tel 01969 666077
www.bearcottageinteriors.co.uk

Fremington
dalesbikecentre.co.uk
tel:01748 884908

Cafe & Cakery

SOUPER TUESDAYS
Homemade soup, bread roll,
slice of cake & hot drink
Only: £7 every Tuesday

**SHOW STOPPER
FRIDAYS**

Every week a 'Showstopper' of a cake!

Dales
Bike Centre



OPEN EVERYDAY!

Book a Stay
14 beds Bunk & Breakfast

New & Ex Hire Bike Sales
Mountain/Road Bike Hire
E-Bike Hire & Sales
Bike Servicing



FROG
bikes

Orange
MOUNTAIN BIKES

REETH AND DISTRICT GAZETTE LTD

Two Dales WI

The WI has been providing space for women to meet, to learn new skills, and to have a voice on the issues that really matter to them in local, national and international communities since the very first WI meeting in Wales in 1915.

Since then, the WI has developed into a well-loved and trusted place for women, run by women, where women from all generations and backgrounds come together and share experiences, or learn from someone with real experience, first hand. The same is true today.

Now the largest voluntary women's organization in the UK, the WI

currently has 220,000 members in approximately 6,300 WIs.

Several informal evenings have already been held in Reeth. Tasters to see what the WI has to offer.

Following the success of these sessions the Two Dales WI will now launch in the New Year when all women from Swaledale and Arkengarthdale are invited to the first meeting at **7.30pm Tuesday 8th January at Hudson House, Reeth.**

Come along and take the opportunity with other women to have fun, share knowledge, learn new skills and enjoy time together socially.

Look forward to seeing you there.

Janet Pogson
Acting President

Advertising in the Gazette

Full details from:

treasurer@reethgazette.co.uk

The Gazette is online:
www.2dales.org.uk

Dawn Clarkson Associates are pleased to introduce our sister company



**WILLS and
ESTATE PLANNING**

Peace of mind

- Will Writing & Storage
- Lasting Power of Attorney
- Probate Administration
- Inheritance Tax Forms
- Inheritance Tax Planning

Not sure what to include in your Will?

Need a Lasting Power of Attorney?

Need help completing Probate Administration?

Discuss ways to reduce your future Inheritance Tax liability

LET US HELP YOU MAKE THE RIGHT DECISIONS

For an informal chat about your options call Dawn

t: 01969 623092 www.willsandestateplanning.co.uk

e: dawn@willsandestateplanning.co.uk Twitter: @WillsandEstateP

**Drop in sessions: Reeth Memorial Hall,
1st Friday of every month – 9am to 12pm**



Swaledale Footcare
Meg Squires MCFHP MAFHP
Clinic Visits at Thornborough Hall Leyburn or
Home Visits Including:



Toenail Cutting
Corn Treatment
Removal of Hard Skin and Calluses
Treatment of Thickened and Fungal Nails
Phone : 01748 884795 or Mobile: 07929065602
Email meg.e.squires@gmail.com

Member of the British Association of Foot Health Professionals

Martyn Leaver
Dry Stone Waller

- Farm or domestic work
- Drystone or facewalling
- Fence repairs and paving
- Misc jobs etc

Thwaite 01748 886025
Mob: 07971 456 043

Greenway Cattery

*Set in the Yorkshire dales providing safe
and comfortable care for your cat,
peace of mind for you.*

*Open all year.
Reasonable rates.*

*Greenways
Grinton
Richmond Nth Yorks*

Tel 01748 884312

STUBBS
ELECTRICAL

For all your electrical work.

- ✓ Rewires / Alterations
- ✓ Shower / Smart Controls
- ✓ Electric Underfloor Heating
- ✓ Electric Car Charge Points
- ✓ Solar PV
- ✓ Battery Storage

Contact Stephen on:

M: 07980130014

E: stubbselectricaltd@gmail.com



Top 2 Toes

By Zoe

Local Beauty Therapist now at

The Hair Salon, Reeth

Mondays and Saturdays

Contact:

Zoe - 07805976594

The Hair Salon - 01748 884627



@top2toesbyzoe





What's Up, Doc?

We hope you have all had a peaceful and restful Christmas and New Year.

As the 'flu vaccination season for 2018 has now ended, we are grateful to all our patients for their help in making sure you all get vaccinated. The 'flu clinic day raised over £500 towards new equipment for patients (I am sure many of you have been using the take home blood pressure monitors we purchased from last year's event.). Leslie Brown was the lucky winner of the hamper from Campbell's of Leyburn.

Some of you may have received new smart phones or tablets (not the medical kind) for Christmas. You may want to check out our social media posts on Facebook or Twitter. You can

also access our online services to book appointments, order repeat medication, see areas of your medical records or send email messages to the GPs, dispensary or admin staff. Full details are available on our website: www.reeth.org.uk.

We have started to publish some of our performance statistics and quality improvement work on the website as well as directly accessible local health resources. You can also view our Twitter feed on the website homepage.

North Yorkshire County Council and Citizen's Advice Mid-Yorkshire have launched the 'Warm and Well' scheme to provide people in our area with practical and financial help to stay warm and well over this winter. The project aims to target a broad range of people including those on low income or benefits, those with mental health conditions, those with long term health problems, older people, pregnant women and households with young children. Further information can be found at www.warmandwell.org.uk or by telephoning **01609 767 555**.

New Year is often a time of reflection and resolutions to make changes to improve our health. The practice is not just here for when you are unwell. We can also support and provide you with information to help with important changes in life, whether this is to stop smoking, lose weight, address alcohol consumption or address specific health concerns.

Whatever your goals for 2019, we wish you every success.

Mike Brookes and Team



**Ballet for boys and girls
from the age of 3 years.**

**Modern Dance/Jazz
for children and teenagers.**

Tap for children and adults.

**For more information please
contact:**

Janet Seymour LRAD

Tel: 01748 884 677

Mobile: 07958 145752

www.swaledaledance.co.uk

**The Gazette is online:
www.2dales.org.uk**

Tom Guy

Hannah Guy and family would like to thank everyone for the numerous cards, flowers and messages of sympathy following Tom's death. They are overwhelmed by the generous donations which totalled over £1500, given in his memory and which will be split between St Andrew's Church and the Great North Air Ambulance.

Personal thanks go to Martin Sunderland who, on behalf of the British Legion, gave the salute as the cortège passed the War Memorial and to Chris Atkin who tolled the church bell on their arrival. To Simon Barningham, all at St Andrew's and the members of Reeth Band and Muker Band for giving Tom such a wonderful send off.

It is extremely comforting to know how well loved and respected Tom was - clearly he touched most parts of the community during his long and happy life.

**Gazette Competition
Winners 2018**

Of the twelve music related competitions this year there have been nine winners (an improvement on last year when there were only seven). With prize money rolled over that still means £60 going to charity.

Marion Parnell had two wins and there was one each for Richard Lewis, Peter Midgley, Dave Skinner, Celia Smith, Alan Thorogood, Julia Thorogood and The Bass Man. And Adele Sunter won the caption competition.

The money goes to the following charities: Great North Air Ambulance Service £5; Multiple Sclerosis Society £10; Prostate Cancer UK £20; RNLI £5; Stillbirth and Neonatal Death Society (SANDS) £10; Swaledale Mountain Rescue £15, and Yorkshire Air Ambulance £5.

Congratulations to all.

VICTORIA DESIGN GROUP

**Consulting Civil &
Structural Engineers**

Tel: 01748 886717

All design work undertaken, whether your project is large or small.

Also structural surveys

www.vdg.co.uk

**Dry Quality Logs
For Sale**

01748 811 110

OVERTON HOUSE CAFÉ & SHOP, REETH

Light meals and home baking.

Eat in or take out. Orders taken.

Closed Mon, Thurs & first Sunday of each month

Opening times may vary so please check.

01748 884045

www.overtonhousecafe.com

Geoff Braithwaite

**Property Maintenance &
Painting and Decorating**

Tel: 01748 886 783

Mob: 0789 106 3546

Email:

geoff@mukerchapel.co.uk



THE GARDEN ROOMS

AT TENNANTS



Café • Restaurant • Exhibitions • Events • Gift Shop

OPEN SEVEN DAYS A WEEK | FREE PARKING | FREE ADMISSION*

*Some events have an admission charge - please check our website for details



The Garden Rooms at Tennants, Leyburn, North Yorkshire DL8 5SG
01969 621146, info@tennantsgardenrooms.com
www.tennantsgardenrooms.com



Gorgeous Cottages are the Letting Agency for Luxury Holiday Cottages in Yorkshire. Get in touch and find out how we can help your holiday home realise its full potential.



'gorgeous'

[adjective]
1. strikingly beautiful or magnificent
2. (informal) extremely pleasing, fine, or good



GORGEOUS YORKSHIRE

GORGEOUS COTTAGES



www.gorgeouscottages.com



0844 736 6276



info@gorgeouscottages.com

REETH AND DISTRICT GAZETTE LTD

The C B Inn Christmas Knockouts
Everybody Welcome

<p style="text-align: center;">Darts Knockout</p>  <p style="text-align: center;">Friday 18th January 2019 8pm Start £3 entry includes supper Please be signed up by 7.45pm All Welcome</p>	<p style="text-align: center;">Domino Drive</p>  <p style="text-align: center;">Friday 11th January 2019 8pm Start £3 entry includes supper Please be signed up by 7.45pm All Welcome</p>
<p style="text-align: center;">Pool Knockout</p>  <p style="text-align: center;">Friday 4th January 2019 8pm Start £3 entry includes supper Please be signed up by 7.45pm All Welcome</p>	



*True Colours
Hairdressing
and Holistic
Treatments -Reeth*






Hair Cutting, Hair Colouring
Reflexology, Facials, Tanning
Aromatherapy, Skin Care
Indian Head Massage
Wedding Hair, Hair Up's
Mineral Make Up, Sun Care
Shampoo's, Conditioner's
Pamper Hands, Pamper Feet




www.tropicskincare.co.uk/shop/saraholney

07 875 926 946
sarahlouseolney@hotmail.co.uk

OPEN ALL YEAR ROUND, EVERYDAY



MUKER-IN-SWALEDALE, RICHMOND
NORTH YORKSHIRE



Celebrating 40 Years

The Quality is Legendary...
...The Choice is Endless.

TAKE HOME A PIECE OF THE DALES

Call into our shop in Muker Upper Swaledale and see what unique garments we have on display from hand knit cardigans, sweaters, hats, scarves & gloves to machine knit sweaters & cardigans for both ladies & gents. We also stock sheepskin rugs, slippers & gloves.

WE ARE OPEN EVERYDAY
Tel. 01748 886251

Email: mail@swaledalewoollens.co.uk
or visit our website where you can order online:
www.swaledalewoollens.co.uk

DALES VIEW

HANDYMAN AND CLEANING SERVICES

HOME & GARDEN MAINTENANCE

Lawn cutting, Lawn weeding, Lawn scarifying, Pruning, Fence repairs, Jet washing, Painting and decorating, General repairs, Window repairs, Locks changed. Carpet cleaning, House cleaning etc etc

**For a reliable and great service
Call John or Davina on 01969 650416
or Mob 07989383205**

Kearton Country Hotel, Thwaite



Tea Rooms Restaurant & Bar

Family run hotel
Large spacious restaurant
with stunning views over Kisdon

Tea Rooms & Licenced Restaurant

11.00am – 4.30pm Mon & Thurs
10.00am – 4.30pm Fri, Sat & Sun
Closed Tues & Wed

Three course home cooked evening meals

Join our guests & experience our
warm friendly hospitality.
Evening meal reservation only

Real ale & fine wines
Tel **01748 886277**

Email:
info@keartoncountryhotel.co.uk
www.keartoncountryhotel.co.uk

North Yorkshire Community Messaging

Despite many community messages, press releases etc we are seeing an increase in North Yorkshire of frauds and scams and local residents are still becoming a victim due to bogus telephone calls and emails.

Please remember this:

The Police or your bank will NEVER

1. Ask you to withdraw money to hand over to them for safe keeping
2. Ask you to transfer money to a 'safe account' for fraud reasons or to aid an investigation, even if they say it is in your name
3. Ask you to lie to your bank about why you are withdrawing or transferring money
4. Send someone to your home to collect cash, PIN, cards or cheque books if you are a victim of fraud
5. Ask you to purchase goods using your card and then hand them over for safe keeping
6. Phone and ask you for your PIN or full banking password, even by tapping them into your phone keypad

The message is simple:

DO NOT give out your passwords or bank details.

YORKSHIRE FOOT CLINICS

Podiatry/Chiropody
Alex Kravchenko MChS, BSc Pod (Hons)
**Nail cutting, callus, corns &
ingrowing nails**
All treated in the comfort of your home
Tel. **Richmond 850020**
Or Hawes 667449
Always insist on state registered

Let's Get Lyrical

Firstly, let's round off Christmas:

- So then I dropped it in the mailbox and sent it special **D Elvis Presley - Return To Sender**
- The old home town looks the same as I step down from the train **Tom Jones - Green Green Grass Of Home**
- An evil looking man called Two Ton Ted from Teddington **Benny Hill - Ernie (The Fastest Milkman In The West)**
- No dark sarcasm in the classroom teachers leave them kids alone **Pink Floyd - Another Brick In The Wall**
- Mamaaaaaaaaaaaaaa ooooooh **Queen - Bohemian Rhapsody**

In total, these songs spent 33 weeks at Number 1 over the Christmas period.

And the winner is . . . to be revealed next month because of early deadlines for the January edition. So actually, we haven't rounded off Christmas at all.

Anyway, this month the focus is on Reg Dwight aka Sir Elton Hercules John. These are the first lines from which of his (and Bernie Taupin's) songs.

Music Tuition for all ages with www.colinbaileymusic.co.uk

07711 211169

Drums & Percussion; Vocals; Piano & Keyboards; Music Theory; 'Get Musical' Workshops.

- She packed my bags last night pre-flight
- I remember when rock was young
- It's a little bit funny
- Blue jean baby, L.A. lady, seamstress for the band
- When are you gonna come down when are you going to land

For the tiebreaker: How many studio albums has he released? And how many singles?

The usual rules apply with no internet use allowed but listening to Sir Elton's Greatest Hits is obligatory. Answers can be left at the Post Office or sent via email to: editor@reethgazette.co.uk.

MAC

PS For all you Proggies out there, here's a little teaser:

For which band did Elton John unsuccessfully audition for the lead vocalist spot?

REETH POST OFFICE . . . more than just a Post Office

Reeth, Richmond, N. Yorks DL11 6SE Tel 01748 884201



**Don't go cold this winter:
Logs and sticks only £3.99 a net.**



Visit our website to download a copy of our Monthly Promotions Leaflet

SERVING OUR COMMUNITY www.reethpostoffice.co.uk



two dales bakery
reeth

An artisan bakery, shop and café at
Unit 1, Reeth Dales Centre, Silver Street

PLANNED OPENING
FRIDAY 25TH JANUARY 2019

We are looking for shop and café staff to join our friendly team
on a full or part-time basis. For more details please contact
Hannah on 07733 268463 or hannah.parnell@me.com

**WENSLEYDALE TREE &
HORTICULTURAL SERVICES**

(Est. 1995)

DAVID ALLEN (HND Arboriculture)



Fully insured (£5 million)
Professional tree work: felling,
crown thinning etc undertaken
to BS 3998

Petrol log splitter for hire
Woodchipper for hire

Tree stump removal

Hedge establishment and maintenance.

Supply /planting of forest and ornamental trees

Fruit tree maintenance. Weed control services

Tel. 01969 667364 Mobile 07811 576108

E-mail: treesinhawes@gmail.com

www.treesinwensleydale.com



Beauty and tranquillity.
Quality and care.

Cat Hole Cottages | Cat Hole House | Thwaite
Richmond | North Yorkshire | DL11 6DR
Tel: 01748 886366

Discover our treasury of gorgeous
cottages in Swaledale and Arkengarthdale.
Well-equipped, stylish and individual,
our cottages offer guests a wonderful
holiday in the midst of superb scenery!

**To find your perfect cottage
call Judith on 01748 886366**

www.catholecottages.com
judith@catholecottages.com



www.theoldschoolmuker.co.uk

The Old School Muker

Muker's Premier Art Gallery & Craftshop

The Old School will be closed from
from 7th January, re-opening on
15th February.

Happy New Year and **many thanks**
to all our friends, customers,
makers and artists, who've
supported us over the past year!



Please check our website for opening hours.

www.theoldschoolmuker.co.uk

The Old School, Guning Lane, Muker, DL11 6QG | Tel: 01748 886155 | Email: ask@theoldschoolmuker.co.uk



Poppy Appeal 2018

At the time of going to
press the amount collected in the Two
Dales during Remembrance is:

£2145-39

The total amount raised during 2018
now stands at:

£3241-66

My thanks to those who support me
with the Appeal and to everyone in the
Two Dales who give so generously each
year.

I have been saddened that people
are now choosing to break with

tradition and are giving collections
made during Remembrance to other
organisations.

A note for organisers of
Remembrance events etc: Wreaths and
all types of Remembrance items can be
ordered through me and by doing so
you will increase the amount of our
annual total and reduce the handling
costs to the British Legion by having a
single bulk delivery.

Martin Sunderland

01748 884671

TREVOR J. HIRD

ELECTRICAL CONTRACTOR

No job too small **FREE** estimates

PAT Testing Specialist

Telephone 01748 832238

Holiday Cottage

Beautifully refurbished and
refurnished 2 bedroom holiday
cottage close to the Green in
Reeth available to let.

Contact by email

lesleyhaggie@btinternet.com

**Reeth Memorial Hall
Events**

Friday 18th January: Martin Carthy & John Kirkpatrick. These two folk legends return to Reeth. Tickets are selling fast. Tickets 16 (£18 door)

Friday 1st February: Symbio - Swedish duo on hurdy-gurdy and accordion. Best New Artist of the Year at the Swedish Folk & World Music Awards 2016. Tickets £12 (£14 door)

Thursday 21st February: Other Roads are singer/song-writer, guitarist Pete Abbott, 8 times Scottish fiddle champion Gregor Borland and multi-instrumentalist, singer, song-writer Dave Walmisley. Their UK tour brings them to Reeth via Germany, the Netherlands and Denmark. - Tickets £13 (£15 door)

Friday 22nd February: Kiki Dee & Carmelo Luggeri. Don't go breaking your heart by missing this. (And yes, it is the REAL Kiki Dee and not a tribute). Tickets £17 (£19 door)

Sat 9th March: Peter Knight (ex-Steeleye Span) & John Spiers (ex-Bellowhead) 'A sublime pairing, ... [creating] a live performance to be remembered for a long time. ... Peter Knight can spin the World on his

Old Waiting Rooms

Self Catering
Hunmanby Railway Station (nr Filey)
Victorian Charm. Modern comfort.
Full weeks or short breaks.
Sleeps 2. Dogs welcome.
www.oldwaitingrooms.co.uk
Or ring Monica Bridge: 01723 892426

Bow' (Sir Terry Pratchett). Tickets £15 (£17 door).

Fri 15th March: Rag Mama Rag - one of Europe's finest Country Blues acts - vocals; acoustic lap steel, bottleneck, acoustic guitar; ukulele, harmonica, percussion, washboard. Tickets £13 (door £15)

Tickets available from **Reeth PO** or phone **John Little (01748 884759)** or visit: www.reethmemorialhall.co.uk.

Tickets half price for under 16s. All events 8.00pm. **John Little**



All aspects of tree work carried out by fully insured and NPTC qualified tree surgeons.

Tree removal, pruning, planting, hedging and stump grinding.

Contact Tom Hollingworth
07929322227

www.arborestrees.co.uk

Aches & pains?

Remedial massage can help...

- neck & shoulders
- back • hips • knees
- feet and ankles
- arms & hands

Jennifer Thursfield
Remedial Massage NAMMT CNHC

Tel: 07889 546608 • Based in Richmond
jtremedialmassage@gmail.com
www.jtremedialmassage.co.uk

M.W Waste Services

Environmental & Drainage Specialists

Septic Tanks Emptied & Cleaned
Blocked Drains Cleared Fast
Grease Traps & Interceptors Emptied
Soakaways Rebuilt & Repaired
Gully Emptying & Street Cleaning
Refuse Collection
Septic Tanks Installed
High Pressure Drain Jetting
Mobile Steam Cleaning
Sewage Plant Maintainace
Industrial & Domestic Work Carried Out

Low Hang Bank Depot
Melsonby
Richmond
North Yorkshire
DL10 5NQ
Tel: 01325 377860/377850
24/7 Call Out
[Http://www.mwwaste.co.uk](http://www.mwwaste.co.uk)

Clear Your Blocked Drains Fast With Our High Pressure Jetter
Free Quotes & Estimates

THE GUNNERSIDE ESTATE

A professional office administrator /
bookkeeper is required to join the existing
Estate office team to assist with all the
administrative and financial aspects of
running the Estate.

Excellent I.T. and communication skills
required.

Experience of accountancy and/or a
commercial business environment an
advantage.

Excellent terms and conditions.
This is initially a part time, temporary role
with potential to become a full time
permanent position.

Please make enquiries via email to:

Andra Sison Ham

andra@gunnersideestate.co.uk

The Estate Office, Ivelet, Gunnerside,
Richmond, North Yorkshire, DL11 6JH

MICHAEL GUY

ELECTRICAL

FULLY QUALIFIED ELECTRICIAN

Over 20 years experience working
in the dales in all areas of
electrical work.

From an extra socket to a complete
rewire; underfloor heating to
portable appliance testing, I offer a
reliable and competitive service.

Contact Michael on:

T: 01748 886097

M: 07980130017

E-Mail: michaelguy25@hotmail.co.uk

NICEIC APPROVED CONTRACTOR

REETH VILLAGE STORE

**We supply a wide range of items
including:**
locally baked bread, pastries, cakes,
fresh fruit & vegetables, dairy
produce, soft drinks,
ice cream, household goods,
confectionery, tobacco and greeting
cards.

**Electronic phone card top up and
debit/credit card facilities.**

**A fine selection of
wines & spirits.**

Daily and weekend papers.

Opening Hours

Mon-Fri 7.00am-6.00pm

Saturday 8.00am-6.00pm

Sunday 8.00am-4.00pm

Tel: 01748 884552

**Message From
The Swaledale Museum**

2019 marks the 100th anniversary of the printing of May Sinclair's novel *Mary Olivier*, which is partly set in Reeth. Perhaps this is the year to read this, if you have not done so already?

Two hundred years ago the new church of St Mary's Arkengarthdale had just been opened, replacing an earlier church undermined by flooding. What local historical anniversaries can you think of to celebrate this year? Let us know.

We start the New Year off celebrating the receipt of a lovely new acquisition: a beautifully executed little 'alphabet' sampler, made by the nine year old Elsie Pedley (1921-1986) from Grinton, in 1930. It will be on display

R. & W. GIBSON & SON Ltd.

**CERAMIC WALL
& FLOOR TILERS**

SHOWROOM NOW OPEN

Monday - Friday: 9.00am - 4.30pm

Saturday: 10.00am - 1.00pm

(or by appointment)

At Borough Road,

Gallowfields Trading Estate

DL10 4SX

Tel. 01748 - 822682 (Home)

Tel. 01748 - 821909 (Showroom)

"We cover the Dales"

ARKENGARTHDALE SPORTS ASSOCIATION

DOMINO DRIVE &

NEW YEAR RAFFLE

FRIDAY 8th FEBRUARY 2019

7.30PM

ARKENGARTHDALE C of E SCHOOL

Domino Drive, Raffle & Supper

Entry £4.00 children £2.00

when we re-open in May. Does anyone have a photograph of Miss Pedley from around this time? We would love to copy it, to use on the accompanying panel.

We wish all our volunteers, Friends, well-wishers and the team on the Gazette a very Happy New Year. Don't forget that we are now closed for the Season, and will re-open in the Spring. You can of course still contact us, see the details below. PLEASE NOTE that our e-mail addresses changed to:

museum.swaledale@mail.com

If you want to sign up for our FREE e-newsletters that come out every few weeks with latest developments, do let us know, and we will put you on the circulation list. For advance information on events, why not become a Friend of the Museum? Friends of the Museum annual membership: single £10, joint £15, family £20 gives unlimited free entry to the Museum, discount on talks, and our twice yearly Newsletter.

For more information contact Helen Bainbridge via:

museum.swaledale@mail.com

or on **07969 823232**.

Or visit our website:

www.swaledalemuseum.org

Helen Bainbridge

Upper Dales Family History Group

October's speaker was Jennifer Deadman who talked about her work as a surveyor of historic buildings and the importance of accurately observing and recording what is still visible before the remains are lost forever. She began with some fascinating records made in the 18th and 19th centuries by travellers such as Daniel Defoe and the engraver Thomas Bewick which showed typical pastoral scenes of the time, including very basic dwellings and people going about their daily work. Other important sources of contemporary information were old maps which showed how settlements had changed over the years, with some shrinking from a hamlet to a single

farmhouse or vanishing altogether.

Illustrating her talk with pictures of recent projects with which she has been involved in Nidderdale and Teesdale Jennifer had many photographs of buildings which, externally at least, show little signs of their former use. At a farm on the A66 for example, a room above the stables had been used to house farm labourers who had left their mark in graffiti on the walls, recording everything from the dates of ploughing and sowing to a drawing of a football match. All this is now lost as the buildings have been converted to another use.

A cluster of farm buildings in New Forest, south of Barningham were all that remained of the settlement of Hallgate where the last inhabited house had been abandoned in the late 20th century. Searching trade directories and census records had enabled Jennifer to trace its gradual decline over the decades and to learn about the families who had lived there and to identify which houses they had lived in, as well as the acreage farmed. Surveying the properties inside had revealed details of daily life and showed how the houses and farm buildings had been altered over the years according to need and financial means. On many farms in the area the presence of a domestic fireplace in a cowshed for example reveals the position of the original farmhouse in amongst the barns and byres while its 19th century replacement is situated away from the mud and muck of the working yards. A fine example of this was at Naby in Teesdale which had been rebuilt as part of Monsignor Thomas Witham's rebuilding and improvement of the Lartington estate.

Hudson House

Your valuable community asset

Rooms for hire

Suitable for meetings, lectures, talks,
training or social events.

The Meeting Room - maximum of 30 people.

The Meeting Place (evenings only) – maximum
of 10 people.

Access to PCs, Internet, printer, photocopier,
laminator and kitchen facilities.

The Orchard Gallery for hire

Suitable for exhibitions of paintings,
photographs and other artwork.

Own entrance through the garden.

Sales can be handled for you.

For prices (special rates for community use),
bookings or more information please contact

Jill May on 01748 884 485 or

admin@hudsonhouse.info

REETH AND DISTRICT GAZETTE LTD

Even individual field barns had stories to tell. Very steep gable ends revealed that the building had originally been thatched, extensions showed how farming enterprises grew or changed focus over the years and some concealed evidence of other uses completely hidden from outside. Jennifer had made a plan of each one but had also recorded details of the internal fittings for feeding and tethering stock, as well as the tell tale signs of blocked windows and fireplaces which showed these barns had once been isolated cottages and farms. One interesting example of this came from the Nidderdale project. Today Ling Hall is just a substantial barn with the remains of a fireplace and built in cupboards but in the late 19th century it featured in a book by Joseph Lucas Studies in Nidderdale who not only

described visiting the last elderly inhabitants but illustrated his text with a line drawing of them and the cottage interior which made a fascinating comparison with the present day photographs.

Tracy Little

Property Maintenance & General Building

Building work & property maintenance undertaken

Plumbing, tiling, plastering

Kitchen & bathroom fitting

Joinery works

Small jobs welcome

Free No Obligation estimates

Also detail plans prepared for planning applications

Contact Gary

Tel. 01748 886691 / Mob. 07896 147207

E-mail g_staines@sky.com



**Dawn Clarkson
Associates**
Accountants and Business Advisors
Minding your business

- Company Accounts
- Sole trader & Partnership Accounts
- Letting Accounts
- Construction Industry Scheme Returns
- Tax Returns
- VAT Returns
- Payroll & Auto- enrolment
- Xero Accounting Software
- Inheritance Tax Planning
- Capital Gains Tax

A small practice offering a personal and professional service.
We are your local Xero accounting software advisor,
here to help make your life easier.

Tel: 01969 624999 www.dawnclarkson.co.uk

Email: dawn@dawnclarkson.co.uk Twitter @DClarksonAssoc

**Drop in sessions: Reeth Memorial Hall,
1st Friday of every month – 9.00am to 12.00noon (except January)**

The Bellerby Study Group

After Christmas food try food for thought this New Year. The Bellerby Study Group resumes in 2019 and you are very welcome to join us.

Our new programme starts on **Wednesday 23rd January** when Jennie White of White Rose Candles is the speaker. In 1971 Jennie and Mick started making candles in a 19th century watermill in Wensley. Candles are made from paraffin wax and beeswax using very interesting and unusual equipment designed by Mick. Jennie will talk about *'The Art and Business of Candle Making.'*

On **Wednesday 30th January**, in *'The Dales in Camera'* Christine Whitehead, a lover of flowers, fauna and wildlife, will delight us with her

Reeth Writers Group

Every Monday a small and relaxed group meet to hear and discuss each other's prose and poetry.

If you'd be interested, please phone

01748 884438

images of nature, landscape and a view of the Dales through her eyes and camera lens.

Bellerby Study Group arranges talks in winter and walks in summer. Meetings are at 7.30pm in the Memorial Hall, Church Street, Bellerby. Talks are followed by tea and cakes, fees are still £10 per term for members; visitors and guests are always welcome at £2.00 each per meeting.

For more information contact **Douglas Dempster on 01969 622040.**

STAIRLIFTS

Do you find stairs a challenge?

Call us today and arrange a free no-obligation home stairlift assessment, or visit our extensive showroom to try out our very own demo stairlift!

Call us: 01423 799960

Visit us: Linkside House, Forest Lane Head, Harrogate, HG2 7TE.



Lady Interior Decorator

Painting & Decorating,

Competitive rates, Free estimates, Friendly advice, Est 25 years

Call Yvonne on: 07838378836

Based in Richmond

Email: yvonesdecor@hotmail.co.uk





JEREMY MOON

— DECORATOR & PAPERHANGER LTD —

Established 1981

Quick turnaround for holiday homes and lettings

Fully insured

Reliable and trustworthy tradesman

High class decorating at affordable prices

References available upon request

Call Jeremy for a free quotation

T: 01748 880 155

M: 07876 764 812

Email: JEREMYLMOON@BTINTERNET.COM



3D Cross-Stitch



The Nutmeg Gallery

Dozens of models on display together with kits, accessories and the full range of DMC stranded cotton. Normally open Mon-Fri, and Saturday afternoon.

Reeth Dales Centre, Off Silver Street,
Reeth, DL11 6SP, 01748 884926



www.3dcrossstitch.co.uk

DONE AND DUSTED

HOLIDAY COTTAGE CLEANING

Weekday/weekend turnaround cleaning

Spring and Deep Cleaning

Full Laundry Service

Mattress Steaming

Carpets/Rugs Cleaned

Gardening and Maintenance

Temporary relief cleaning cover

all year round

**Long established, reliable with
attention to detail**

Tel Karen on

01748 811680 /

07583 271419

to discuss your
requirements



www.doneanddustedcleaners.co.uk

REETH AND DISTRICT GAZETTE LTD

The Charles Bathurst Inn ARKENGARThDALE

Outstanding fresh food served in
a warm & friendly atmosphere.
19 en-suite bedrooms with amazing views.
Available for dinners, weddings & meetings.



- Lunch & Sunday Roasts Mon-Sun 12pm-2.30pm •
- Evening Menu 6pm-9pm Monday-Friday & Sunday •
5pm-9pm Saturday
- Early Bird Menu 3rd Friday of each month •

FOR FURTHER DETAILS OR TO RESERVE A TABLE
Telephone: 0333 700 0779 Website: www.cbinn.co.uk

The Punch Bowl Inn & Coffee House

Delicious food served all day. Open 11am until 11pm
Coffee House open Mon-Sat 10.30-4pm



- Evening Menu 5pm-8.30pm Monday-Saturday •
Sunday 5pm - 8pm
- Traditional Carvery Every Sunday 12pm-2.30pm •
• STEAK NIGHT every Tuesday •
- SPECIALITY NIGHT & QUIZ 3rd Thursday of the month •


FOR FURTHER DETAILS OR TO RESERVE A TABLE
Telephone: 0333 700 0779 Website: www.pbinn.co.uk

nh flooring

Covering Swaledale, Arkengarthdale,
Wensleydale and beyond!



www.nhflooring.co.uk

Image with thanks to 

Carpet - Wood - Laminate - Vinyl

Tel: 01748 822834

Mob: 07789 996526

E-Mail: nick@nhflooring.co.uk

We offer a home sampling and measuring service
arranged at a time convenient to you. Please call us to
make an appointment.

Alternatively, our showroom is open on Thursdays and
Fridays from 9am - 5pm and Saturdays 9am - 1pm.

Find us at: Unit 6 Borough Court
Borough Road
Gallowfields Trading Estate
Richmond
North Yorkshire
DL10 4SX

Ellerton Abbey

Antiques

Antiques & Collectables

Bought & Sold

Anything considered from
single items to full houses

Contact:

Nicholas Lambert

01748 884321

07971 060590

nicklambert2013@gmail.com

P.A. DOOLEY

Plumbing & Heating
Engineers



- Installation of Energy Efficient Heating Systems
- Bathrooms Fitted
- General Plumbing
- Gas Fires/Stoves Installed

Tel: **01969 667958**

Mobile: **07890 021829**

CORGI
Registered

CALOR
LPG GAS
Installers

OFTEC
Oil Installers



R.A.Lofthouse
Roofing Services
Kirkby Stephen

We specialise in traditional &
modern slating, flagging and tiling.

We offer a reliable and competitive
service in and around the Eden Valley

- Traditional slate specialist
- Re-roof to repair work
- Slating, flagging & tiling
 - Lead work
 - Velux windows
 - Chimney work

For a free quotation or any enquires
please call

Tel: 017683 42689

Mob: 07557738016

Email: r.a.lofthouse@outlook.com

MCGARRY & CO SOLICITORS

Friendly local legal advice on :

- Wills
- Probate and Administration of Estates
- Powers of Attorney
- Nursing and Residential Home Costs
- Agricultural Matters
- Land Transactions

Home or farm visits

21 Galgate, Barnard Castle,
County Durham DL12 8EQ
Tel: 01833 600160

Market Place
Hawes
DL8 3QS

Telephone: 01969 666290

Email : office@mbmcgarry.co.uk
Regulated by the Solicitors Regulation
Authority

REETH AND DISTRICT GAZETTE LTD

Stewart Teale

Landscape Gardener

All aspects of hard landscaping

General garden maintenance

Over 20 years experience

For a free estimate Tel:

01748 884705 – 07782849379

IAN REYNOLDSON ELECTRICAL

For all your electrical needs

No job too small

Tel. 01748 886725

Mobile: 07814547339

PATRICIA

DAIRY COTTAGE, LOW ROW

Experienced in both men's and ladies'

sewing alterations.

Most sewing tasks undertaken

'Will come to you'

01748 886905

HOLIDAY COTTAGE

REETH

Glenkobla is a cosy holiday cottage ideally situated just off the village green, next to the owner's property.

Sleeps 1-2

Tel. **01748 884237**

E-mail: walkerg17@sky.com

Dales Web Solutions

All aspects of Web site design

Visit: www.daleswebsolutions.co.uk

Email: info@daleswebsolutions.co.uk

Tel: 01969 666174

Mobile: 07931 822736



SALES – LETTINGS – MANAGEMENT

FREE 'NO OBLIGATION' MARKET APPRAISAL AVAILABLE UPON REQUEST

6 Bridge Street

Bedale

DL8 2AD

01677 422282

bedale@

normanfbrown.co.uk

14 Queens Road

Richmond

DL10 4AG

01748 822473/822967

richmond@

normanfbrown.co.uk

25 Market Place

Leyburn

DL8 5AS

01969 622194

leyburn@

normanfbrown.co.uk

www.normanfbrown.co.uk

Events In Wensleydale

Leyburn & District U3A

The speaker for January is Professor Chris Gerrard of Durham University who will talk about the 'Scottish Soldiers Project.' This sheds new light on a centuries old mystery surrounding the last resting place of soldiers who died after being captured and imprisoned in Durham Cathedral and Castle during the 17th century civil wars.

Professor Gerrard is the main author of a book entitled *Lost Lives, New Voices at the Battle of Dunbar 1650*. He is known as an excellent speaker and will be at the meeting on Friday 18th Jan at 10.30am at the usual venue. Visitors welcome.

LASS - Leyburn Arts & Social Society

The monthly social meeting and usually a screening of a classic film, are normally held on the 4th Tuesday of the month at Thornborough Hall, Leyburn. Telephone the Secretary Brian on 01969 623257 for information. January's meeting will be on 24th at the regular time of 7.15pm.

Leyburn Arts & Community Centre Youth Project

We are looking for a young adult, 18+ and with lots of enthusiasm. Preferably qualified or experienced in youth work, and able to work in a self-employed capacity.

You would be involved with our youth activities, approximately up to 8 hours per week on average but initially for help with the Youth Café specifically which is held every Monday from 6.00pm until 8.00pm.

STURDY TRAVEL

INDEPENDENT TRAVEL SPECIALISTS

Robert Sturdy is now working from an office at home in Crakehall.

For all your travel needs, home and abroad

Call: 01677 422826

Email: robert@bakewelltravel.co.uk



Part of Bakewell Travel



If you feel you might be interested please contact the Centre on **01969 624510**, call in, or email admin@leyburnartscentre.com for more information and an informal chat.

Saffron Charity Meal

Saffron Indian restaurant are kindly hosting a charity meal in aid of Leyburn Arts & Community Centre on Monday 21st January. Please book at the restaurant or via The Centre, 01969 624510. All welcome.

Wensleydale Society

January's speaker on Friday Jan 4th is Tony Keates on '*Wensleydale, an Industrial Landscape? A look through the eyes of an industrial historian.*' All are welcome to the talks for a small charge.

If you wish to know more about the Society, and its regular walks programme, please telephone the Secretary on **01969 624246**. Membership is £5 per year.

Rose Cottage

Just off the village green in Reeth

Sleeps 4

Dogs welcome

Tel 01964 562239

Email: rosecottagereeth@gmail.com

REETH AND DISTRICT GAZETTE LTD

Church Services January 2019

6th Jan.	9.15 am	St. Mary's Muker	<i>Eucharist</i>
	10.30 am	Low Row URC	
	11.00 am	St. Edmund's, Marske	<i>Holy Communion</i>
	11.00 am	Holy Trinity Low Row	<i>Eucharist</i>
	11.00 am	Reeth Evangelical Congregational	
	2.00 pm	Keld URC	
	2.30 pm	Gunnerside Methodist	
	6.00 pm	St. Andrew's Grinton	<i>Iona Evening Prayer in Fremington Village Hall</i>
	6.30 pm	Reeth Evangelical Congregational	
13th Jan.	9.30 am	St. Andrew's Grinton	<i>Eucharist in Fremington Village Hall</i>
	9.30 am	St Michael's Downholme	<i>Morning Prayer</i>
	10.30 am	Low Row URC	
	11.00 am	Reeth Evangelical Congregational	
	11.00 am	St. Edmund's, Marske	<i>Morning Prayer</i>
	11.15 am	St. Mary's Arkengarthdale	<i>Holy Communion BCP</i>
	6.00 pm	St. Mary's Muker	<i>Iona Evening Prayer</i>
	6.30 pm	Reeth Evangelical Congregational	

Religious Society of Friends (Quakers)

Meetings are at Quaker House, 7 Grove Square Leyburn
every Sunday at 10.30am.

Additionally on the 2nd and 4th Sunday of every month at the Scout Hut,
Quakers Lane, Richmond at 10.30am.

For further information contact Judith Calow on **01748 884320** or
www.dalesquakers.org.uk

Roman Catholic Services

For information contact Father O'Neil on **01748 822175**
www.stjosephsfx.co.uk

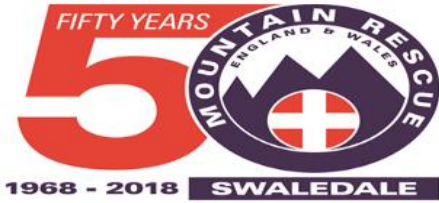
REETH AND DISTRICT GAZETTE LTD

Church Services January 2019

17th Jan.	7.30 pm	<i>Low Row URC Week of Prayer for Christian Unity Service</i>	
20th Jan.	9.15 am	St. Mary's Muker	<i>Eucharist</i>
	10.30 am	Low Row URC	<i>Holy Communion</i>
	11.00 am	Holy Trinity Low Row	<i>Eucharist</i>
	11.00 am	Reeth Evangelical Congregational	
	11.00 am	St. Edmund's, Marske	<i>Holy Communion</i>
	2.00 pm	Keld URC	<i>Holy Communion</i>
	2.30 pm	Gunnarside Methodist	
	6.30 pm	Reeth Evangelical Congregational	
28th Jan.	9.30 am	St. Andrew's Grinton	<i>Eucharist</i>
	9.30 am	St Michael's Downholme	<i>Holy Communion</i>
	10.30 am	Low Row URC	
	11.00 am	Reeth Evangelical Congregational	
	11.00 am	St. Edmund's, Marske	<i>Holy Communion</i>
	11.15 am	St. Mary's Arkengarthdale	<i>Holy Communion BCP</i>
	6.30 pm	Reeth Evangelical Congregational	

<p>The Methodist Minister for the two Dales is Rev. Les Nevin, who can be contacted on 01748 823149 or by email: les.nevin@icloud.com</p>	<p>Rev David Levell minister of Reeth Evangelical Congregational Church can be contacted on 07582 575815 or by email through the church website at www.reethecc.co.uk</p>
<p>The Reverend Caroline Hewlett, Vicar of the Parish of Swaledale with Arkengarthdale, can be contacted on 01748 884706 or by e-mail at carolinejhewlett@btinternet.com</p>	<p>The United Reformed Church ministers are Revd Stephen Collinson and Revd Hilary Collinson. They can be contacted on 01748 821586 or revscollinson@outlook.com revhjcollinson100@outlook.com</p>

REETH AND DISTRICT GAZETTE LTD



Incidents Nov 9th to Dec 1st

16/11/2018: (53) 14.00hrs: Called by the Police to rescue an injured walker in Gunnerside Gill. Located by the team, treated on scene & then evacuated to the waiting ambulance in Gunnerside.

Fundraising news:

SAT 22nd Dec the team will be getting freezing cold during our annual Christmas street collection in Leyburn, if you can spare an hour to stand around helping us, just drop by the team vehicle for a collecting box.

Special thanks to:

The team would like to thank the Tan Hill Inn for hosting & donating the food for our 'end of 50th bash', Also thanks to everyone who donated to the raffle. Our guest speaker, Gerrard Marsh, gave an excellent presentation on the Mines of Swaledale. Gerrard runs these talks at events during the year and donates the collection to the team. Well worth attending if you get chance.

50th Year update

So far (1st Dec 2018) we have raised just over £42,600 towards our target of £50,000 in our 50th year. We are hoping that we will reach our goal during December. More details in February's edition.

And finally:

Team members, search dogs & families will be on call (as we are every single

day & night of the year) over Christmas and the new Year, 24 hours a day. Ready to respond to above or below ground search & rescues, day or night wet or dry. If you see us out & about say 'Hello!'

Happy New Year everyone. Thanks for the ongoing support

**Swaledale Mountain & Cave
Rescue Team**

**DON'T FORGET IF YOU NEED
MOUNTAIN OR CAVE RESCUE,
call the POLICE on 999 and ask for
MOUNTAIN or CAVE RESCUE.**

**They will call us and an ambulance
(if required).**

www.swaledalemrt.org.uk



All aspects of building work
skilfully undertaken by
local time-served builders,
with over 30 years' experience
of building in the dales.

Contact Greg, on:
**01748 886 434 / 253 or
07817 719881**

Just A Thought

You don't climb mountains without a team; you don't climb mountains without being fit; you don't climb mountains without being prepared; and you don't climb mountains without balancing the risks and rewards. And you never climb a mountain on accident - it has to be intentional. **Mark Udall**

'Payment By Results' Farm Pilots A 'Success'

Figures and analysis revealed at a farming conference in the Yorkshire Dales last month have suggested that a payment by results approach to agri-environment schemes can produce 'amazing' environmental enhancements and strengthen trust between farmers and government agencies.

Held at the Key Centre in Middleham, the 'Results-Based Agri-Environment Payment Scheme Conference' was organised by Natural England and the Yorkshire Dales National Park Authority. It marked the end of a three year EU-funded project to test the payment by results approach in Wensleydale and in Norfolk - although the government has since stepped in to directly fund the pilots for a further two years.

One of the key findings announced at the event was that hay meadows and wader habitat in the Wensleydale pilot had performed better than those in conventional agri-environment schemes.

A panel of four local farmers spoke at the conference in support of the payment by results approach. And one of the senior civil servants at Defra tasked with designing a new post-Brexit Environmental Land Management system, James Le Page, told the 127 delegates that Defra was "really interested" to explore the potential for expanding on the model.

He said: "We're delighted with the success of the arable and upland pilots and we're really pleased to be able to carry on with those and provide additional funding now the European funding component has ended.

"And we're really interested to explore how much potential there is to expand on that model, while also being aware of the challenges. We'll only apply payment by results after extensive co-design and testing."

He went on to explain the government's latest thinking on the future of farm payments post-Brexit, when the area-based Basic Payment Scheme will be wound down:

"The current situation that farmers and land managers have to deal with is very complex. You've got a whole load of guidance to deal with, and application forms; it's a lot to manage and it's not working for us. So the vision is for one flexible contract, one set of guidance, and mass uptake. An Environmental Land Management system will be the cornerstone of that policy.

"We are looking for a new relationship with our land managers. It's not one where you are customers of subsidy. You are much more contractors, contracted to deliver public goods in a way which fits alongside your other marketable products."

Andrew Fagg, YDNP Media Officer

Charity Quiz Night Thanks

John and Ian would like to thank everyone who supported and helped to make their Charity Quiz Night, held on Saturday 24th November, such a success. The two charities, The Swaledale Scouts and Target Ovarian Cancer, have each received £250 raised from the quiz. Ian and John hope to arrange another Charity Quiz Night at some point in 2019.



**Wensleydale Creamery
Visitor Centre**

**Enjoy our Winter Menu in
Calvert's Restaurant**

Indulge in recipes inspired by our award-winning cheese from The Ultimate Yorkshire Wensleydale Cheese Experience Menu – 3 courses for £16.95

Cheese Tasting Room & Exclusive Gift Shop
Shop fantastic local food produce as well as bespoke ceramics and woodware.
Visit our Cheese Shop to sample over 20 varieties of cheese!

New Butter-Making Display

Learn all about butter-making in the Dales

www.wensleydale.co.uk
01969 667664

**NORTHERN WALLS
DRYSTONE WALLING
& LANDSCAPING**

Master Dry Stone Waller
Former National Trust
gardener with 20 years
experience

City and Guild Certificate in
Horticulture

www.northernwalls.com
Tel 0795 148 1239

The Healing Collective

Swinithwaite - Wensleydale

Are you feeling stressed, unhappy, anxious, overwhelmed or weary? Are you suffering from a physical illness, like back pain?

We offer a range of complementary therapies to help and revive you.

Reiki Reflexology **Bach Remedies**
Indian Head Massage

Counselling

Emotional Freedom Technique

We also treat animals of all shapes and sizes

t: 0845 474 2383

info@healingcollective.co.uk

www.healingcollective.co.uk

Our therapy rooms are at the Coach House adjacent to Berry's Farm Shop & Cafe

**Calvert & Jenkinson Ltd
Building Contractors**



All aspects of building work carried out from renovation to new builds, plastering to roofing.

Tel:

01748 825962

07837 955869

Email: cjbuildersltd@gmail.com

Company No: 6769263

1783
BAR & RESTAURANT

DINE IN STYLE
THIS WINTER

The
Burgoyne

NEW MENUS AVAILABLE INCLUDING FESTIVE OPTIONS



We are open to non-residents, serving food 7 days a week.

Visit us for:

-Breakfast

Morning

coffee

Lunch

New hot options available!

Afternoon tea

Dinner

New – option of traditional dishes with our Bar menu!

Please visit our website for sample menus and times:

<https://www.1783restaurant.co.uk/>

Or call us on: 01748 884292

OPEN OVER CHRISTMAS AND NEW YEAR

Festive Greetings from all at The Burgoyne Hotel

Splendid Court Furniture Of The Late 17th Century

The magnificent Baroque court furniture of the late 17th Century is the subject of Janusz Karezewski-Slowikowski's talk to The Arts Society Wensleydale on **Tuesday 8th January at 2.00pm in the Middleham Key Centre.**

He explores both the skills and materials employed in design and construction and the socio-economic significance of the furniture. Employing unique close-ups from Knoles and elsewhere, Janusz considers the courtly ceremonial splendour and function of State furniture of the post-Restoration period. Inspired by French taste, the best examples from remarkable British craftsmen

successfully integrated form and decoration. In less skilled hands its "intolerable luxury and huge expense" led to vulgarity and bad taste.

New members will receive a very warm welcome. Visitors pay £8 a lecture, refunded if they join. Contact Ros Higson on 01765 635244 wensleydale@theartsociety.org for more details. **Dr Chris Whittaker**

A.J. CLACHER LTD

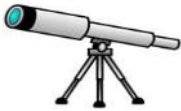
Established 1961

PLUMBING & HEATING ENGINEERS

- Gas, oil and solid fuel central heating installations
 - All aspects of plumbing and gas installations
 - Boiler servicing and repair • Landlord Gas Safety inspections
 - Bathroom installations and Plumbing • Heat Pumps and Solar Heating
- Unit 38 Forge Way, Cleveland Industrial Estate, Darlington DL1 2PB

Tel. 01325 468372 • E-Mail info@ajclacher.co.uk
www.ajclacher.co.uk

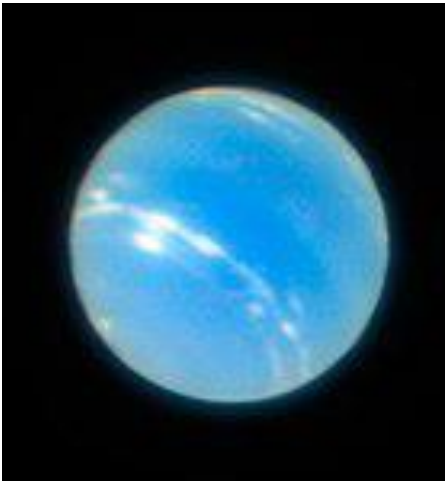




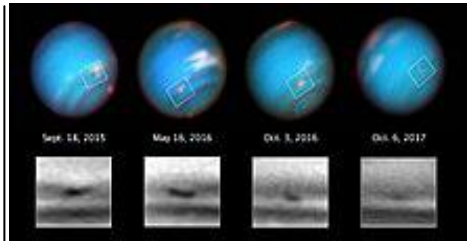
Astronomy In The Two Dales

"What, why have so many clouds enringed the sky? What are you preparing, father Neptune?" Vergil.

Neptune, god of the sea and lord of all horses, as well as the eighth planet from the sun. Slightly heavier than Uranus at 17 times the mass of the Earth, Neptune is another ice giant, having a gaseous atmosphere glittering with ice crystals.



Like Uranus, Neptune has a ring system, although this is fragmented and is described as a series of arcs. There are also 14 moons. The largest is Triton which appears to have been captured by the planet's gravity and is slowly falling towards Neptune and its inevitable destruction. Once again the temperatures this far from the sun are cold, - 218 centigrade and a wind speed of up to 1300 mph, almost twice the speed of sound.



Storm systems are also present out here in the depths of the solar system and Neptune has some of the largest and most violent, giant tornados thousands of miles across that last for months at a time and create holes in the upper atmosphere allowing the colours of the lower atmosphere to show through.

Neptune was not discovered by observation, but rather by mathematical prediction. Observations of the orbit of Uranus revealed that some unseen object was pulling on it and after a lot of number crunching and final visual confirmation, Johann Galle and Urbain Le Verrier announced on the 23rd September 1846 that they had found a new planet.

Only Voyager 2 has visited Neptune and at this distance signals take 4 hours to return to Earth, at the speed of light. It took Voyager 2 12 years to get this far out and although there are plans to send another mission such an endeavour would not see results until 2042 at the earliest unless some development in propulsion occurs. (Or has it already? Stay tuned for a forthcoming exposé of top secret technology that could get us to our nearest star in 8 months instead of 5 years.)

Happy New Year to all.

The Starman
Reeth Informal Astronomy Group
www.reethastro.org.uk

**Property Restoration,
Improvements & Maintenance**

Darren Chadwick, Keld (Est. 2001)

General Building, Plumbing, Roofing,
Bathroom & Kitchen fitting
Floor/wall tiling, Joinery, Plastering,
Decoration, Damp Treatments
UPVC door and window fitting and repairs.
Fireplaces, flues and stove installation.

New: Commercial, Agricultural and
Residential spray and coating service
(decorative or protective) for large wood or
metal buildings or internal/external
decoration.

**Free Quotes and advice
always available.**

Tel: 01748 886698

07791 363285

**Email: darrenchadwickbfc@aol.com
www.darrenchadwick.com**

The Hair Salon



Arkengarthdale Road, Reeth DL11 6QT

We offer a wide range of advanced
hairdressing services

Everyone welcome - including children

We now stock the hair straightener
brand **ghd**, along with **System
professional** hair care collection.

Ghd have a super styling product range
along with many electrical tools beside
their innovative straightening irons.

Open: Tuesday – Saturday

Late night Wednesday

Salon Tel: **01748 884 627**

Fremington Village Hall

Redecorated and now with its own piano,
the Village Hall (known locally as the Sunday
School) is available to hire for all kinds of
events, from regular classes, talks and
community activities, to one-off functions
like children's parties, lunches and dinners
and special occasions such as wedding
receptions and anniversary parties. The Hall
has a small kitchen with electric cooker and
microwave; toilet facilities including
disabled toilet; and a small rear garden.

The Hall is a registered charity run by a
small and dedicated volunteer committee.
You can book the Hall by phoning or texting
the bookings secretary **Alison Tupman** on

07967 839494 or by email at
fremingtonvillagehall@outlook.com

P Bellwood

Joinery and Building Services

Quality, Local, Reliable Time-Served Craftsman

www.paulbellwood.co.uk

07964 051 004

paulbellwood@aol.com

Bespoke Joinery
UPVC & Timber windows
and doors
Kitchen Fitting
Decking
Plastering
All aspects of building work



Fully insured.

References available on request.

Low Row & Feetham Literary Institute

Upcoming events

Saturday 19th January: 7.00pm.
Village Dinner with entertainment provided by "Five Pearls and A Piano". Tickets can be purchased from Sue Alderson (886292) or Andrew Silver (886613).

Friday 15th February: 7.30pm.
Domino & Whist Drive. £4.00 including supper.

Have you considered Low Row & Feetham Literary Institute for your party / meeting / event? Seating for 80 at tables, meeting room and fully equipped kitchen.

For the millennium a pictorial record, property and occupiers was made of the Low Row postal area. If you would like a copy of the CD of this record, please contact Sue or Raymond Alderson on 01748 886292 or susana@swaledale.org

Louise Woodhead



Low Row Coffee Morning

Many thanks to all who donated goods, decorated trees and came and spent money at our Christmas Tree themed coffee morning.

The total raised towards Low Row Institute repairs was £405.00.



Hudson House Centre Reeth

**Owned by the Community of
the Two Dales**

Community

- Gallery
- Learning
- Library
- Orchard
- Transport

National Park Centre

North Yorkshire CC

Police

Richmondshire DC

Swaledale Festival

Business Forum

Hot drinks vending machine

Internet & WiFi

Local notices & information

Meeting Rooms

Tourist Information & shop

Open all year

7 days a week

See website for times

Silver Street Craft Units
managed by Hudson House.

For all enquires contact

Jill May.

01748 884485

www.hudsonhouse.info



INSURANCE CONSULTANTS

A local company small enough to care, but big enough to compete

FARM – COMMERCIAL – HOME – MOTOR INSURANCES

Kirkby Stephen 017683 72285 – Sedbergh 015396 20124

Email: sales@capstickinsurance.co.uk

www.capstickinsurance.co.uk



JN & E Capstick Insurance Consultants are authorised and regulated by the Financial Conduct Authority

THE OLD TEMPERANCE BOOKSHOP

Reeth, Richmond, DL11 6TE

Tel. 01748 884185

Christian books, cards & crafts



Beside the village green in Reeth, the ‘capital of Swaledale’, we are 50 yards up from Reeth Evangelical Congregational Church

Closed on

New Year’s Eve

Opening times :

1.30pm - 4.00pm Mon, Thurs, Sat

10.30am - 4.00pm Fri (Market Day)

James Peacock



**Solid Fuel
Merchant
Bainbridge**

Good quality fuels at competitive prices.

Deliveries to Wensleydale, Swaledale and Coverdale.

No delivery too small.

Tel. 01969 650212/650465

Email:

james-peacock@btconnect.com

www.james-peacock.co.uk



**The Farmers Arms,
Muker, Upper Swaledale**

The heart of spectacular walking country

Serving good pub food everyday
12noon - 2:30pm and 6.00pm - 8:30pm

Well-kept local real ales

Closed on Mondays throughout winter, except for 24th & 31st December and February half term

Holiday apartment (sleeps 2)

Tel: 01748 886297

www.farmersarmsmuker.co.uk

A Word From The Vicar

Confirmation 2019

We are hoping to invite Bishop Helen Ann to lead a Confirmation service in 2019. If you would like to be confirmed, or have been thinking about this, please contact the vicar or the curate to discuss this further.

Weddings 2019

If you are hoping to get married in a Church of England church in Swaledale or Arkengarthdale in 2019, please contact the vicar or the curate to fix a date and to start the paperwork and preparation. It is helpful for us if you can be in touch at least 6 months' notice before your intended date.

Rev Caroline Hewlett (vicar)

Tel. 884706

email: carolinejhewlett@btinternet.com

Rev Alison Stewart Smith (curate)

Tel. 884665

email: alisonmstewartsmith@gmail.com

Cosy Holiday Cottage

Attached to owners' farmhouse
on Hill Farm in Arkengarthdale.
Sleeps 2. No pets. E.M. on request.

Mrs Gladys Atkinson

Tel. 01748 884550

GREEN COMMERCE LTD.

Established for over 35 years

Best quality hardwood logs

Kindling sticks also available

Free Local Delivery

Call David Fenwick on

Tel: 01833 650151

Mob: 07921 317630



Support the Reeth & District Gazette

Order your printing from us and we will credit 10% of the value of your order to the Gazette account at no extra cost to you!

Quote Gazette when ordering

Booklet Printing

- Reports
- Manuals
- Brochures
- Catalogues
- Newsletters



Saddle Stitched - Perfect Bound - Wire Bound

From your computer files or hard copy

NCR set Printing

- Invoices
- Estimates
- Order Forms



Fast Turnaround - Padded - Loose Sets



Reflections
PhotoGraphic
Services

Tel: 01833 690733

www.refprint.co.uk

email: sales@refprint.co.uk

**Arkengarthdale Parish
Council November 2018**

Planning Applications: An application at Langthwaite Chapel, Arkengarthdale, for full planning permission for change of use of the chapel to form a single dwelling had already been considered by the councillors in order to meet the consultation deadline. The Council was in full support of this application, noting that the proposed work would not be detrimental to the external appearance of the chapel and that it would enable a young family to come and live in the dale.

The application to build affordable homes on land northwest of Arkengarthdale Methodist Church, Langthwaite, would be discussed along with the planning officer's report by the YDNPA Planning Committee on 13 November 2018. Councillors Stubbs and Watkins would attend the meeting to support the application.

Bench: The land agent for Arkengarthdale West had been contacted for permission to site the bench in memory of Richard Birks on the roadside opposite the CB Inn, and there had been no objections.

Remembrance Service: The service held at St Mary's Church on Sunday 11 November had been extremely well attended, the church had been very well decorated with poems and poppies provided by Arkengarthdale school, and the cornet had been played beautifully. As usual, the Parish Council had provided the wreath, which had been laid at the war memorial during the service.

Arkletown potholes: Highways had responded to a request for road

Langthwaite - Arkengarthdale

RED LION INN

Free House

Real Ales – Bar Snacks

Books & Maps

Tel. 01748 884218

repairs in Arkletown by saying that the pot holes did not meet the Highways' criteria for attention and so would not be repaired at present.

Christmas Lights: Langthwaite's Christmas lights would be arranged by the Coun. Stubbs.

Footbridge at Arkletown: The YDNPA ranger would be contacted about the poor state of the footbridge at Arkletown, and in particular the handrail on the Booze Wood side of Arklebeck, and would be asked if the bridge could be fixed properly, and ideally replaced, rather than have another interim quick-fix.

Broken street light: A broken street light in Langthwaite had now been mended by the District Council.

Next meeting: 7 January 2019.

Susan Dray

Carvoeiro, Algarve, Portugal

Spacious well-equipped ground floor apartment, sleeps 5.

Quietly situated on a small low-rise development with five pools.

Within strolling distance of this vibrant, friendly village with its lovely beach and lots of excellent restaurants.

Golf, tennis, walking or just lazing by the pool.

Wood burning stove for cosy winter lets.

Please contact Lee on 01969 326169

Email: lee.lowther30@googlemail.com

REETH AND DISTRICT GAZETTE LTD

Kim and Richard
Atkinson

WELCOME YOU
TO
THE BLACK BULL



REETH

The oldest inn in Reeth

Quality accommodation

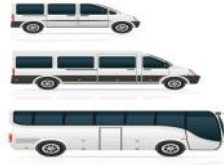
Excellent food

(Very popular Sunday Carvery)

A fine selection of
Real Ales and Wines

And a warm welcome
Tel. 01748 884213

**HARKERS
& COACHES**



Mini Buses & Coaches up to 35 Seats

&

Private Hire Taxis

Tel: 01748 884533

Mob: 07703 559959

Email: harkerscoaches@hotmail.com

We are a family run business offering reliability and competitive prices

PS & FM Terry – Leaholme, Reeth DL11 6SF

CHARMING OLD COTTAGE IN THE CENTRE OF REETH (sleeps 6+)

Open fire & background heating.
Fully fitted kitchen, dishwasher, fridge/freezer.
2 bathrooms, 2 double bedrooms, 1 twin bedroom &
attic play area/fourth bedroom with 3 single beds.
Private, secure, rear courtyard area.

Dogs welcome.

Contact Denyse on **01740 631470** or
e-mail denyse00@btinternet.com
www.holidaycottageswaledale.com

NYCC HOME LIBRARY DELIVERY SERVICE

This service is provided fortnightly
on Thursdays for Reeth and Upper
Swaledale villages.

For elderly or disabled residents

Contact tel. no. 01748 824331
Please leave a message or phone
Colburn Library: 0845 4349502

The Bridge Inn, Grinton

Tel 01748 884224 www.bridgeinn-grinton.co.uk

Traditional coaching inn serving quality food in the restaurant and bars
Open all day. Food 12noon to 2.30pm and 5.30pm to 9.00pm



Recommended in the CAMRA and Good Pub Guides
Music night with local musicians Thursday from 9.00pm
Children and dogs welcome. En suite accommodation

Dales Reyno-Vations



General Building & Maintenance

Property renovations / Roofing

Kitchen fitting / Joinery

Bathroom suites / Tiling

Painting & Decorating

Patios / Landscaping / Ground maintenance

Free estimates / Insurance quotes

No Job too small

D Reynoldson

11, Place Hill, Reeth, Richmond

North Yorkshire, DL11 6SD

01748884309 / 07792458801

Email: david.reeth1@outlook.com

Scarr House Kennels—Muker

At least 4
off-lead
field
walks a
day and
late night
let out



Licensed
Insured
Heated

All breeds and behaviours catered for

01748 886295 / 07917 866734 scarrhouse@gmail.com

Carpet & Upholstery Cleaning
Stone Floor Cleaning & Sealing

Safe, Thorough, Eco Friendly
20 years' experience
Local family business

Call Eco Dry Carpet Care,
Leyburn

01969 622620

For FREE Survey

Or visit

www.ecodrycarpetcare.co.uk



Owner, Ian McIntosh



DORANT

NEW CAR?

We probably can - most makes.
 Let us quote you.

USED CAR?

We surely can - choice of 25,000!!
 Let us quote you.

LCV / DOUBLE CAB?

Of course we can - new or used.
 Let us quote you.

FINANCE?

We certainly can.

PCP Contract Hire Lease Purchase Hire Purchase

Let us quote you.

Part exchange welcome.

Jed Collins, Bridge Garage, Reeth 01748 - 884245

Service MOT Parts Tyres Bodywork

**Reeth Parish Council
November 2018**

Donations: Letters of thanks for donations had been received from the local Scout group and from the Great Northern Air Ambulance.

Memorial plaques: An enquiry about placing a memorial plaque on the footbridge at the Water Splash would be referred to the Moor Committee.

Election meetings: RDC Election Meetings would be held on March 7 and 13.

Dales Centre: The clerk reported that the Dales Centre units were now managed by Hudson House and it was not known who had originally put up the 'no ball games' sign. Coun Meffen would discuss the question of riding bikes with the management of Hudson House as it was the only safe place in the village for children to practice.

Playground: The report had been received on equipment needing repair. The urgent items had been dealt with and the rest would be done in the spring by Playdale.

Village signposts: The park ranger Michael Briggs had discussed signposting round the village with Coun Frankland and suggested erecting standard signage around the green,

particularly pointing out the path to the river. Councillors agreed in principal depending on the design of the posts and the proposed material.

Tree survey: The clerk had instructed a local professional to carry out a safety survey of trees in the parish.

Remembrance Services: These had gone well and there had been a good turnout at both events. The council would make a donation to the Royal British Legion for the large heavy duty poppies round the war memorial which would be kept for future use.

Planning: The council would give permission for the air heat pump on the exterior of the White House subject to a legal agreement being drawn up, at the applicant's expense, to show this was not setting a precedent.

Bus parking: The possibility of designating a parking place for the buses would be considered at the January meeting. In the meantime the drivers would be reminded about not obscuring the honesty boxes.

World Cycling Championship: Local businesses and individuals would be encouraged to get involved in promoting the parish ahead of the 2019 UCI Road World Cycling Championship which would pass through the dale on September 29.

Street Lights: One light on Back Lane was still out of order.

Healough Notice board: Quotes had been received and an order would be placed for the new board.

Parish Clerk: The present clerk, Ian Scott, will retire in January and the meeting appointed Mrs Kate Deakin as his successor.

Next meeting: Monday January 28 at 7.00pm in Reeth Memorial Hall.

Housekeeper Required

4 bed holiday cottage near Reeth

£11.00 per hour

Changeover days:

Friday and Monday

Tel 07415 177937

Preferably Jan/Feb start



KINGS HEAD
PUBLIC HOUSE

*A proper pub offering a warm
welcome, great food and
Yorkshire ales*

Food Served

12-2.30pm & 5.30 – 8.45pm
Closed on Mondays
throughout the Winter

Happy Hour

6.00-7.00pm Fridays

A pint of beer or a medium glass
of wine for just £2.50 each

Pub Quiz

Every other Sunday
from 8.30pm
Cash prizes to the winners

Gunnarside, Swaledale

DL11 6LD

01748 886261

www.kingsheadgunnarside.com

REETH GARAGE LTD.

**ARKENGARTHDALE ROAD,
REETH, RICHMOND,
NORTH YORKSHIRE.
DL11 6QT**

The fuel station is fully open with
JET fuel - a trusted brand from
distributor Tate Oil of Otley.
With a price at time of going to press of
UNLEADED @ 125.9 pence per litre*
DIESEL @ 137.9 pence per litre*
we are competitive with
Tesco, Murco etc.

**Buy local
Keep it local
Stay local**

Don't forget our forecourt shop:
From coal, fuel cans and cleaning
fluids to wellingtons, WD40 and
washing up bowls which are on offer
in blue or red with raised handles for
easy lifting at only £3.95.

Try us.

We may have something you need

Monday - Friday: 8.00am - 6.00pm

Saturday: 8.30am - 12.30pm

Sunday: Closed

**Tyres Batteries Exhausts
Servicing MOT**

*Prices may vary

www.reethgarage.co.uk

TEL. 01748 - 884243



Reeth Brass Band

Paul Hutchinson and his sixteen year old son James, both members of Reeth Brass Band, played the last post and reveille in six different locations during the commemorations for the 100th anniversary of the end of WW1. Paul performed it twice. The first time on Reeth Green at the War Memorial, on the morning of 11th November; then in St. Andrew's Church, Grinton for the Service of Remembrance in the afternoon.

James played it at Richmond School and Arkengarthdale School, also in St. Mary's Church and at the War Memorial in Arkengarthdale.

Below is a photograph of James performing to all pupils and staff of Richmond School.



Members of the Band were joined by an equal number of members from Muker Silver Band, to play for the funeral service for Tom Guy in St Andrew's Church, Grinton, on Tuesday 20th November. Both Tom and Hannah, his wife, have been lifelong supporters of brass banding in the dales and Tom

will be sadly missed. Our deepest sympathy is extended to Hannah and the family for their sad loss.

On Wednesday 21st November a small band played for the switching on of Christmas tree lights at The Orchard housing development in Richmond. The band was joined by a choir from St. Anne's Church, Catterick Village for carols from 6.00pm to 7.30pm.

The coach left Reeth at 8.00am to travel to York, for a second consecutive year, to play for the St. Nicholas's Fair on Saturday 24th November. The weather was kinder this year than last when it was very cold. Dry reasonably warm conditions prevailed. To perform a marathon of Christmas music, from traditional carols to popular Christmas tunes from the past, we played from 10.45am to 3.30pm using a system of resting players by shifts. We played with our backs to the Mansion House, in St. Helen's Square, with a view of a large illuminated Christmas tree and St. Helen's Church in the foreground and the Minster in the background.

The crowds, on the day, passing by, would number thousands, possibly tens of thousands who were enjoying the many attractions available to them.

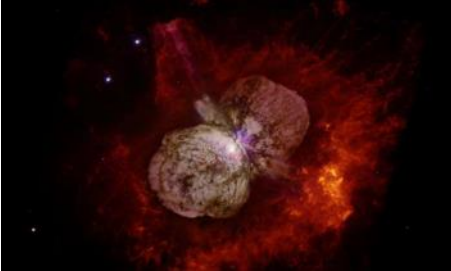
Following the performance in York the band travelled back to The George Carvery at Wormald Green, Harrogate, for dinner and later returned to Reeth. We all agreed it was a good day and one band member was heard to say: "It was a lovely day out".

Band activities in December will be reported in the February edition of the Gazette. There are no planned engagements in January 2019.

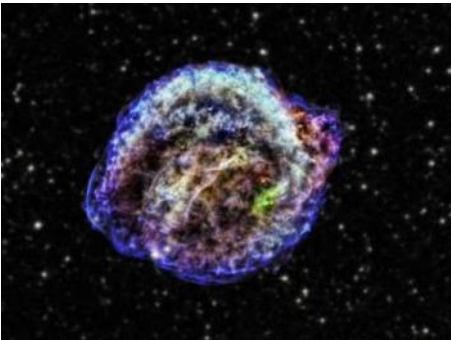
Irwin Blenkiron

Astronomy In The Two Dales Highlights of 2018

Here are some images associated with astronomical discoveries from the past twelve months,



A picture from the NuStar telescope of the Eta Carinae nebula, the remains of a massive explosion that occurred in 1838, this image has led to the discovery of cosmic ray emissions from the 2 stars which are in the centre of the nebula.



The Kepler supernova, first spotted by Johannes Kepler in 1604, is the result of the collision of two stars, not the explosion of one that had reached the end of its life. Both of the stars were destroyed, which surprised astronomers, who could not find any star remnants in the nearby star field.



UGC 6093, a spiral barred galaxy, 500 million light years away, which has an active black hole at its centre. This galaxy also emits microwaves, meaning it is a Megamaser, 100 million times brighter than microwave emitters found in our galaxy.



NGC 6240, the result of two galaxies colliding, the cloud of gas and dust is more than 30,000 light years across and is caused by the two black holes which are orbiting around each other, gradually falling towards each other until they collide and explode.



REETH AND DISTRICT GAZETTE LTD

Closer to home, new images taken from the Juno probe which is orbiting the giant planet Jupiter. This image is taken at an altitude of 3,900 miles above the clouds and reveals the amazing structures that exist in the storm clouds of the largest planet in our solar system.

For all the latest news on astronomy, I recommend a visit to **Phys.org**, a website that has all the latest articles and discoveries that have been peer reviewed and published.

Starman
Reeth Informal Astronomy Group

M. GUY - PLUMBING

For all your plumbing requirements

AGAS & RAYBURNS SERVICED

Tel: 01748 - 825640

REETH LITERARY INSTITUTE TRUST

Limited grants are available from the Trust for voluntary bodies and individuals working for the interest of social welfare and education, with the object of improving life within the township of Reeth.

Applications are invited to the Trust at
5 Langhorne Drive, Reeth,
by 28th February 2019.

A financial statement may be required.



TONY SHAWCROSS
property photographer

ARE YOU LOOKING FOR PROFESSIONAL PHOTOGRAPHS
TO MARKET YOUR PROPERTY?

- OR -

WANTING TO REFRESH YOUR MARKETING IMAGES?

With extensive experience of residential, commercial and retail property photography I offer a variety of photography packages to suit any property type and budget.

Commercial work also undertaken.

hello@tonyshawcross.com
www.tonyshawcross.com/Services

Fully insured, DBS cleared with over 35 years' experience.

* see www.tonyshawcross.com/FAQs/Rates



2 Dales Football

We seem to have suffered this last month with various absentees through illness and other reasons and we don't have that many to start with. We also take a break from matches over half term.

We are, however, very pleased the MUGA has been professionally cleaned after the floods a couple of winters ago so we are back training under floodlights on a Wednesday evening. Please enquire about timings if you are new and want to come.

The Under 9s played Leyburn at home on a wet day on Remembrance Day. I don't have a report but we lost and Coen Pickard-Sparne scored for Dales. We timed it so the 2 minutes silence was observed at half time at exactly 11.00. The children from both teams observed the silence impeccably despite it raining. Perhaps this can be compared with a certain Head of State who declined to turn out in case he got his hair wet. We are made of better stuff in the Dales.

We then played Catterick Village away. Dales took time to get organized allowing Village to take control and conceding 4 goals in the first half although one was a direct result of a bad foul on one of our players. Dales had at least one good chance but could not get the ball in the net. Dales came back strongly in the second half conceding only 1 more. I have no report for this match but would pick out Coleby Teague for great improvement for one of our youngest players.

The following week we hosted Catterick Garrison at Reeth. With 2 players already crying off we were left

with 2 more on the day leaving us short. Rowan Wilkinson stood in and played a cracking game. That only made 6 and we invited Garrison to play 6x6 or lend us a player which they declined so we played 6x7 and no question of a substitute.

Despite this the first half was very even and Dales played the best they had all season. We had several chances and were very unlucky not to be ahead but it was a lucky goal right on the half time whistle which allowed Garrison to take a 0-1 lead into half time.

Dales had given everything in the first half and playing a man down and no substitute they were getting very tired and Garrison, with subs to call on started to dominate and score goals. All our 6 played magnificently and I would particularly mention Monty Rowland-Hill and Coen for their 200% performances. Oscar Kendall is also coming on really

GE BROWN & SON BUILDING CONTRACTORS

All Building Work Carried Out
Damp Proof Course & Timber Treatment
Specialist Joinery Work
Work carried out by time-served qualified craftsmen

Email: gebrownson@f2s.com
Telephone: 01748 886356

REETH AND DISTRICT GAZETTE LTD

well in goal.

The Under 12s played Catterick Village Jaguars, their top team and just when it mattered we were without key players. Dales were very slow to start with and Village soon went 2 up despite some excellent keeping from Sam Draper standing in goal for Nick. Dales then came back into the game with a header into goal from Oliver Scott from a corner then Oliver scored again from a penalty. Lenny Blowes came on for Magnus Nathan-Thomas but Village scored 2 more and had another disallowed for offside. 4-2 at half time.

In the second half, Dales showed few sparks playing well below their ability. Lost 7-2 and would have been worse had it not been for a superb performance in goal by Sam.

The next week we played the same team at home. Both teams started well with opportunities at both ends. Village took a lead but Dales fought back with some nice passing. A ball from Oliver out to the left for Josh Luchford to beat one player and a left foot shot made it 1-1. It was still an end to end game with good work from Alfred Atkin giving Dales the chance to take the lead but good saves from the Village keeper kept it 1-1. Jaguars then took control scoring 3 but good work from Ben Alderson, Sam and Jack Dalton in defence brought the game back. Good tackling from Josh, Will Tyra and Magnus Nathan-Thomas created an opportunity for Oliver to slot one home. Village scored again but just before half time Oliver and Lenny exchanged passes for Oliver to make it 3-5.

Early in the second half Jaguars fitness and passing out cut open our defence and they scored 3 quick goals

to make it 3-8. Harriet, back from holiday, battled hard in midfield and Eider Pickard-Sparne played well in leading the forward line. A couple of good saves by Nick kept the score at 3-8 until 2 minutes from the end when Jaguars scored a breakaway goal. Final score was 3-9 but everyone worked hard and there were some flashes of quality passing and tough tackling.

David Williams

01748 884650

davidwilliams@mowdenpark.co.uk

Reeth & District Community Sports Club 250 Club

November Draw

1st	229	Grace Bryant	£40
2nd	200	Terry Hill	£20
3rd	76	Trevor Brown	£10
4th	175	Harry Sunter	£10

Reeth Show

AGM

Friday 1st Feb at 7.30pm

in Fremington Hall

Domino and Whist Drive

Friday 1st March at 7.30pm

in Reeth Memorial Hall.

**The Melbecks Society's
2018 Charity
Coffee Morning**

Decidedly unpleasant weather and a slightly reduced footfall failed to dampen the enthusiasm and generosity of all those who gathered in the Low Row Institute in Swaledale recently for this year's Melbecks Society's Charity Coffee morning.

The many extremely generous donations for raffle and tombola prizes, along with regular stalls for Bric-a-brac, Plants, Books, Cakes/Produce, Guess the Weight of the Cake and Treasure Island, all helped to swell the morning's takings to well over £900.

This year's beneficiaries are two local charities: Swaledale Mountain Rescue Team and the Two Dales Community First Responders.

This now brings the total monies shared between local and national charities by the Society's annual event to almost £20,000 - a truly remarkable achievement for a two hour event in a small rural community.

The Society's Committee would like to extend their sincere thanks to everyone who has helped to make this possible. Their support and the continued generosity of all those who attended, have made this a successful event with benefits enjoyed by many.

Many thanks.

WANTED:

Old Shotgun Cartridges

Collector is looking to purchase single items, boxes, collections; also loading tools, cartridge bags.

Any old shooting items.

01986 892071



**TREVOR AND RUTH
WOULD LIKE TO WISH
ALL OUR CUSTOMERS
"HAPPY NEW YEAR"**

**THANK YOU FOR SUPPORTING
THE GARDEN CENTRE IN 2018.**

**WE ARE CLOSED
BETWEEN CHRISTMAS AND
15TH FEBRUARY, REOPENING
FOR BUSINESS ON
SATURDAY 16TH FEBRUARY**

ROLL ON SPRING 2019!

01969 625397

01748 886557

**Station Yard, Harmby Road,
Leyburn DL8 5ET**

wensleydalegardencentre2015@gmail.com

www.wensleydalegardencentre.co.uk

Grinton & Ellerton Parish Council November 2018

Youth Hostel concerns: The clerk had not yet received a reply from the YHA head office to the letter regarding concerns about fireworks and litter.

Memorial bench: Councillors had looked at various possible sites around the village and had made a number of suggestions to the Martin family who were now considering them.

Police: Several members had met Police and Crime Commissioner Julia Mulligan during her recent surgery in Reeth and had discussed issues including speeding problems but had not yet received any feedback from the session.

Planning Permission: A revised planning application for Whitelea had been submitted which no longer involved creating a separate dwelling. Councillors agreed to this in principal.

Parish Precept: It was agreed to raise the precept for the following year to £2700 to cover the possibility of an election.

Commons Registration: The application to correct the wrongly registered land at Crackpot would be going to a hearing as Open Spaces had not withdrawn their objections.

Road Verges: A site meeting would be held to inspect the problem of saplings growing along the beck side.

Boundary signs: The ranger had requested permission to erect a sign on the path across the moor to advise walkers that they were entering the National Park. There was one objection to this.

Next meeting: 7.15pm on Monday January 7th 2019..

Tracy Little

S.J.R Plumbing Services

For all of your domestic
Plumbing requirements.

C & G/Advanced C & G Qualified
Reliable With Very Competitive Rates

Based in Reeth

01748-884036

Or 07977-297563

R.L.G Property Services

- Paving • Groundworks • Decorating
- Pressure Washing • Garden Maintenance
- General Repairs & Improvements 

0737 607 3816
01748 884 321

Email: Ryang2190@gmail.com

D. J. OLNEY

Painter & Decorator

Interior & Exterior

Call

01748 884065 or

07801 026 006

TAKE TIME TO RELAX!

I can cook delicious dishes ready for your table or freezer, from canapés through to desserts.

You can have quality homemade food ready and on the table with minimal effort.

Contact Sandie Bond

on 01748 884794

Diary Dates

January

- 1st New Year fireworks & BBQ, Reeth green. 7.00pm
- 4th T'Owd Roy Domino Drive, Muker Public Hall. 7.30pm
- 5th Film in Gunnerside Village Hall: *Mamma Mia Here We Go Again*, starring original cast. 7.30pm. Doors and bar open at 7.00pm. £5.00(children £3.00)
- 18th Martin Carthy & John Kirkpatrick, Reeth Memorial Hall. 8.00pm
- 19th Coffee Morning, 10.00am to noon Reeth Evangelical Cong. Church

February

- 1st Symbio, Reeth Memorial Hall. 8.00pm
- 2nd Film in Gunnerside Village Hall: *Phantom Thread*, starring Daniel Day-Lewis. 7.30pm. Doors and bar open at 7.00pm. £5.00 (children £3.00)
- 8th Domino Drive & Supper, Arkengarthdale School, 7.30pm. £4.00 (children £2.00)
- 16th Coffee Morning 10.00am to noon Reeth Evangelical Cong. Church
- 21st Other Roads, Reeth Memorial Hall. 8.00pm
- 22nd Kiki Dee & Carmelo Luggeri, Reeth Memorial Hall. 8.00pm

March

- 9th Peter Knight & John Spiers, Reeth Memorial Hall. 8.00pm

- 9th Film in Gunnerside Village Hall: *Swimming with Men*, starring Jim Carter and Rob Brydon. 7.30pm. Doors and bar open at 7.00pm. £5.00(children £3.00)
- 15th Rag Mama Rag, Reeth Memorial Hall. 8.00pm

Vacancy

Domestic cleaning help wanted in Reeth. About two hours a week. Please phone **884426**.

- - - - -

Middleham & The Dales Local History Group

If you love history you will enjoy the talks at the Middleham and the Dales Local History Group.

The topics covered in the 2019 programme will include Wensleydale Dairy Days; Yorkshire Heroes of Waterloo; the Wyvill family and Constable Burton Hall; and Sister Dora. In the summer we arrange a visit for our Members' Day.

Join us at our AGM at Middleham Key Centre, on **Tuesday 15 January 2019 at 2.00pm**. This will be followed by a talk by Val Slater on her 'eccentric' 4 x great grand-father, Revd. James Law - a Coverdale Clergyman.

Members, new members and visitors are always welcome. Annual membership is still only £10 for 8 meetings and visitors can attend for £3 per meeting.

For more information contact Tony Keates **01969 640436**; or dotandtonyk@btinternet.com



**ANDY MALTON LTD – REETH
GENERAL BUILDING CONTRACTOR**



Dry lining/ plastering/ ceiling work
Roofing/ pointing/ guttering work
Most building repair work carried out

Free estimates - No job too small
01748 884621 / 07837645104
andymalton56@gmail.com



**Own your own piece
of Swaledale...**

**SWALEVIEW
PARK**

From only £30,000*



- The ONLY holiday homes for sale in Swaledale
- Beautiful and unrivalled riverside location at the head of Swaledale yet minutes from Richmond
- Showhomes and Lodges available for viewing on the park
- All inclusive price including all furnishings
- Superb specification
- Open since 1946, Swaledale's longest established, family owned park

*Holiday Lodges from £115,000

Affordable luxury in Yorkshire's National Park

Telephone 01748 823106

Showhome open daily from 9.30 to 5pm

www.swaleviewpark.co.uk

info@swaleviewpark.co.uk



KARL LONGDEN PLUMBING

Reeth, North Yorkshire

karllongdenplumbing@yahoo.com

Tel. 01748 880364

Mob. 07969 329893

24 HOUR CALL OUT SERVICE



Going above and beyond for our clients...

For more information please visit our website at: hallandbirtles.co.uk

COMMUNITYING

FAMILY MATTERS

WILLS

THE ELDERLY CLIENT

Hall & Birtles
-SOLICITORS-

Our services include:

- Landlord & Tenant • Buying & Selling Property • Wills, Trusts & Probate
- Divorce & Matrimonial Matters • Commercial & Private Disputes
- Agricultural Matters • Powers of Attorney

30 min FREE initial consultation

Directors: Alastair C. Birtles BA Hons | Stuart J. Hall LL.B | Deborah C. Parish LL.B

Leysburn Office
The Office, Golden Lane Yard, Leysburn,
North Yorkshire, DL3 5AS
Tel: 01949 652276
Email: leysburn@hallandbirtles.co.uk

Hawes Office
Bank Chambers, Main Street, Hawes,
North Yorkshire, DL2 3PL
Tel: 01949 667171
Email: hawes@hallandbirtles.co.uk

the **Threshing Barn**

Craft Workshop & Home of Spinning, Weaving, Dyeing and Craft Supplies

Supplies from Strauch, Louët, Ashford, Glimåkra, Gaywool Dyes, Ply Magazine and lots more.

Please call to arrange a visit

Tel: 01748 884025
Web: www.threshingbarn.com
Email: threshingbarn24@btinternet.com

New Address: Unit 10, Dales Reeth Centre, Silver Street, Reeth, Richmond, DL11 6SP.

WELCOME TO **Swaledale**

S A B F
Swaledale & Arkengarthdale Business Forum

Members, get assistance to enhance or update your entry
Non-Members, send your details for a basic entry

visit our website
www.swaledale.org

Packed with useful information for visitors and locals alike, including a comprehensive services directory

Just Imagine

Dry Carpet Cleaning

"No soggy carpets or wet dog smell."
No fuss, no heating on or windows open.
We leave your carpets & upholstery clean & fresh ready for immediate use.

Have 3 PIECE SOFA CLEANED and **FREE** room cleaned of your choice - Free Stain Guard

Hard Floor Cleaning

with Anti-Slip Coating for your home

We clean ceramic, porcelain, granite and terrazzo tiles including grout, also all vinyl's including Karndean & Amtico.

Keep your home clean, safe and non slip.

Before

After

Can be used on - Showers, baths, jacuzzis, kitchens & conservatories

zero dry time
Dry Carpet & Upholstery Cleaners
www.zerodrytime.com

Locally based Call David FREE on **0800 180 49 44**

If you are not 100% satisfied with our service you will receive a full refund