

REETH & DISTRICT GAZETTE

ISSUE NO. 249

MARCH 2017



*Your local news magazine
for the Two Dales.*

PRICELESS

REETH AND DISTRICT GAZETTE LTD

First Thoughts . . .

What shall we complain about today? I know - cyclists. They're an easy target.

What about that bike/running event they had around Reeth last month. What a mess they made of the green! Hold on though, this morning I walked across the green and there was some real damage, caused by a large vehicle needlessly driving right across it. Locals I suspect - so that's all right then.

These cyclists though, they come into Reeth and don't spend a penny in any of the local businesses. It's a bit like on Scott Trial day when there are plenty of motor bikes riders coming through Reeth and not stopping to patronise the local businesses; or even on a weekend when people come into

Reeth, park up, go for a walk and go home. Not to mention on Fridays when people drive past the market in Reeth to go to a market elsewhere . . . oops, locals again.

Perhaps we could charge people to come into Reeth? Just like the bookseller in Hawes who charges 50p for people who come into his shop and just browse. He's popular isn't he?

These cyclists are a drain on the NHS though - especially when they come off their bikes and are airlifted to hospital. Never happens to car drivers that. Mind you, I suppose at least the cyclists are in the great outdoors, taking exercise and keeping fit - unlike the thousands of couch potatoes who are contributing to a diabetes epidemic which threatens to bankrupt the NHS.

Anyway, time for a ride on my bike.

The Bridge Inn, Grinton

Tel 01748 884224 www.bridgeinn-grinton.co.uk

Traditional coaching inn serving quality food in the restaurant and bars

Open all day. Food 12noon to 2.30pm and 5.30pm to 9.00pm



Recommended in the CAMRA and Good Pub Guides
Music night with local musicians Thursday from 9.00pm
Children and dogs welcome. En suite accommodation

REETH AND DISTRICT GAZETTE LTD

GAZETTE MANAGEMENT TEAM

Chairman: James Alderson

Greenways, Grinton, Richmond

DL11 6HJ

Tel: 01748 884312

E-mail: chairman@reethgazette.co.uk

Secretary: Sue Alderson

Holme View, Low Row, Richmond,

DL11 6PE

Tel: 01748 886292

E-mail: secretary@reethgazette.co.uk

Editor: Martin Cluderay

Reeth Post Office, Reeth, Richmond

DL11 6SE

Tel: 01748 884201

E-mail: editor@reethgazette.co.uk

Treasurer: Andrew Bedford

Glory Be, Blades, Richmond, DL11 6PS

Tel: 01748 886974

E-mail: treasurer@reethgazette.co.uk

Subscriptions: Elsie Whitehead

Tel: 01748 884132

E-mail:

subscription@reethgazette.co.uk

Distribution: Trevor Brown

The Cottage, Healaugh, Richmond,

DL11 6UA

Tel: 01748 884111

Team Member: David Trusson

Email: rdg@reethgazette.co.uk

Published by

The Reeth & District Gazette Ltd.

Company Number: 06541854

c/o The Company Secretary

Andrew Bedford, Glory Be, Blades

Richmond, North Yorkshire DL11 6PS

Tel./Fax: 01748 886974

E-mail: treasurer@reethgazette.co.uk

No material may be reproduced in whole or in part without permission. Whilst every care is taken for accuracy, the publishers cannot be held legally responsible for any errors or opinions in articles, listings or advertisements.

ADVERTISING

For information on advertising and prices, please contact the treasurer.

For advertising copy, please contact the editor.

The editor reserves the right not to publish any advert or article considered to be inaccurate or misleading

All articles or items for inclusion should be sent to the editor (E-mail: editor@reethgazette.co.uk) or left at Reeth Post Office.

Posting The Gazette

If you are posting a copy of this Gazette to a friend or relative, please note that it is **Large Letter** size and will cost **£1.20 second class**, or **£1.27 first class**. (Two standard first class stamps = £1.28)

Gazette Deadlines

The deadlines for the next two months are:

April issue: March 10th

May issue: April 10th

PLEASE NOTE: We cannot guarantee that items submitted close to or on the deadline date will be included.

Just A Thought

People who volunteer are more satisfied with their lives.

COVER PICTURE

Swaledale Mountain Rescue
in action

See Incident 10 on Page 14

Letter To The Editor

An Idea

Congratulations on your 6th place out of 600+ in the National Parish Magazine Awards. Well done.

I'm reading a novel titled *51st State*, and much enjoying it. Why do I say this? Because the thought occurred to me that you might like to have a Book of the Month piece in the Gazette. You could invite readers to suggest a book - not necessarily a novel - describe it briefly, and say why they liked it. A column filler perhaps, but may be useful as such to you.

Here's my offering:

51st State, a novel by Peter Preston. It is a political satire, first published in 1998, and very funny. Given the goings on in the Western world today the plot is apposite, and to an extent even prescient. Preston was a political reporter, gossip columnist, and for 20 years edited the *Guardian* newspaper, so well briefed for inventing a wicked plot. Inappropriate for prudes.

Andrew Horn, Gunnerside

Thank you Andrew, not a bad idea. If anyone would like to send in book reviews, I'll be happy to consider them for publication.

YORKSHIRE FOOT CLINICS

Podiatry/Chiropody

Tony Wilkinson SRCh, MChS, BSc Pod(Hons)

Nail cutting, callous, corns & ingrowing nails

All treated in the comfort of your home

Tel. Richmond 850020

Or Hawes 667449

Always insist on state registered

GE BROWN & SON BUILDING CONTRACTORS

All Building Work Carried Out
Damp Proof Course & Timber Treatment
Specialist Joinery Work
Work carried out by time-served qualified craftsmen

Email: gebrownson@f2s.com

Telephone: 01748 886356

For Sale

Methodist Chapel, Reeth.

In the first instance for community use.

Site of 287 sq m. Consisting footprint of largely empty chapel building and small school-room to one side.

Chapel measures approx. 115 sq. m. with a mezzanine seating area approx. 77sq m. Some internal features Grade II listed: semi-circular gallery decorated with swags; steps to central pulpit and rail around altar with turned balusters; Corinthian columns supporting arch over organ. School-room measures approx. 48 sq. m. with small kitchen, toilet and boiler room.

Oil Central Heating.

Offers around £30,000 from groups, organisations or the general community to establish new local use.

Enquiries in the first instance to Kevin Pellatt, NY Dales Methodist Circuit Administration Assistant, nydcpaperclip@gmail.com


ROSE PETAL Beauty

Full range of beauty and holistic treatments at Town End Hall, Reeth.

Contact me, Rose Atkinson, on:
T: 01748 880207 M: 07813 841778

E: rose@rosepetalbeauty.co.uk

W: www.rosepetalbeauty.co.uk

: [rosepetalbeauty](https://www.facebook.com/rosepetalbeauty)

*facials - waxing - tanning - makeup - massage
- manicure - pedicure - gel nails - weddings*



SPARITUAL®

Born in March?

Who do you share your birthday with?

- 1 Frederic Chopin, wood
- 2 Lou Reed, his Perfect Day was A Walk On The Wild Side
- 3 Brian Cox, keyboard playing was his D:Ream job
- 4 Ray "Boom Boom" Mancini, pugilist
- 5 Momofuku Ando, invented pot noodle
- 6 David Gilmour, wannabe guitarist
- 7 Ivan Lendl, taught Andy Murray everything he knows about tennis
- 8 Abu 'I-Kasim Mahmud ibn Omar al-Zamachshari
- 9 Ornette Coleman, sax man
- 10 Sepp Blatter, honest bloke
- 11 Harold Wilson, pipe smoking gannex wearer
- 12 Graham Coxon, Blurred guitarist
- 13 Pope Innocent XII, bet he wasn't
- 14 Jasper Carrott, moped rider
- 15 Paul Pogba, waste of money
- 16 Guess who is fifty years old today?
- 17 Robin Cousins, not as good as John Curry
- 18 Cluny MacPherson, invented the gas mask
- 19 Tommy Cooper, 'Just like that.'
- 20 Barron Trump, Donald's youngest
- 21 Ayrton Senna, OK driver
- 22 Reese Witherspoon, no with a knife
- 23 Damon Albarn, Blurred singer
- 24 Steve McQueen, cool legend
- 25 Patrick Troughton, 2nd Doctor
- 26 Guccio Gucci, invented Gucci
- 27 Wilhelm Röntgen, invented x rays
- 28 Scott Mills, dancing DJ
- 29 Sam Walton, invented Walmart
- 30 Norah Jones, Ravi Shankar's daughter
- 31 Couldn't be bothered to look for anyone

P.A. DOOLEY

Plumbing & Heating Engineers



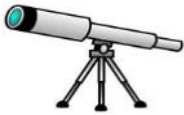
- Installation of Energy Efficient Heating Systems
- Bathrooms Fitted
- General Plumbing
- Gas Fires/Stoves Installed

Tel: **01969 667958**
Mobile: **07890 021829**

CORGI
Registered

CALOR
LPG GAS
Installers

OFTEC
OIL Installers



Astronomy in the Two Dales

The end of winter is nigh: the spring equinox occurs on the 20th of March at 10.29am. The moon is full on the 12th with the new moon arriving on the 28th.

Planetary action is limited to Mars and Venus setting in the west around 8.00pm with Jupiter rising in the east around 8.30pm. Saturn will be visible briefly between 2.30am and sunrise in the south. Our galaxy, the Milky Way, can be seen as a band of smokey stars stretching east to west, early in the evening, and as the earth spins, this side on view of our galaxy will appear to right itself and stretch north to south in the early morning.

We are going to Europa, as the song says. Europa being a moon of the planet Jupiter and a prime candidate for finding life beyond this island earth.

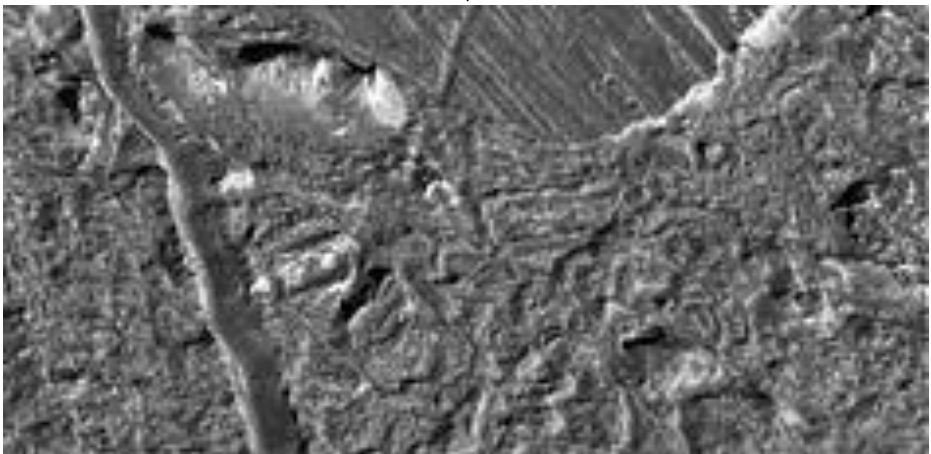
The mission being planned will have a multi stage craft delivering a probe into orbit, a surface lander and a specialised under water probe. This last device will explore the vast liquid

oceans which are hidden under a crust of ice. Even though Europa is covered in frozen liquid it is not totally lifeless as geysers have been seen to eject vapour, suggesting geothermal activity under the moon's ice crust.

Europa is small, slightly less diameter than our own moon, yet it orbits Jupiter in only three and a half days and Jupiter is 1300 times the size of the earth. As Europa orbits, it is distorted by the pull of Jupiter's gravity, which changes the moon's shape from a sphere to a rugby ball, this results in the cracked and broken surface seen in the picture below. Any surface mission will have to navigate ridges of frozen liquid unlike any seen on earth as well as the potential for ice moving while a vehicle is travelling on its surface.

Being tidally locked to Jupiter, one side of Europa always faces Jupiter, the gas giant will appear to hang in the sky, unmoving, with the giant storm of the great red spot ever staring at the tiny moon.

**The Starman
Reeth Informal Astronomy Group
www.reethastro.org**





2 Dales Football

The Under 12s Team 1 (older team) played Futsal at Richmond School with no substitute. The first match v Ripon Blues was rather one sided and, although Dales put in a good performance, they lost 7-0.

They then played Ripon Blacks which was much more even. Dan Marshall opened the scoring with a good goal but Ripon equalised and then went ahead with 2 goals. Luck was not on Dales' side but Dan Webster was able to pull one back. Fin Clark had to come off with a bad knock for a few minutes leaving us only 4 but he went back as soon as he could but Dales were very tired playing 2 games consecutively with no sub. Lost 3-2.

Two weeks later we played Catterick Garrison. After the first goal against us, Dales rather let their heads down and didn't play as well as they can losing 6-0. They then played Bedale Tornadoes and performed much better in a close game. Bedale opened the scoring but Callum Bellwood equalised and then Fin put us ahead with a really good goal. Dales then allowed Bedale back in the match to score two easy goals to lose 2-3 but Dales overall played much better.

Then it was Team 2's turn but they are a year younger than the 2 Ripon teams we were drawn against which was hard. Dales lost the first game 4-0 and just did not play well together. They performed much better in the second game. Ripon opened the scoring then Harrison Walker equalised with a well executed free kick. Ripon went ahead

again but Luke Dent equalised with a powerful free kick. A draw would have been fair but Ripon got a couple of goals in the last two minutes. Oliver Hird had been in casualty with an injured hand but still played so Marko Jones went in goal and made some very good saves in both matches.

The Under 10s did very well in Futsal. Their first match was against Bedale and after an even start, Shawn Mattin opened the scoring with a long hard shot into the top of the net. Alfred Atkin was then able to capitalise from a good tackle to score and the third came from Harry Hammond. Dales were on a roll and Alfred got 2 more for his hat trick. Josh Luchford made a superb finish from Shawn. A goal mouth tussle saw an own goal and Alfred got 2 more. Theo Webster in goal hardly touched the ball. Won 9-0.

The next match was against Catterick Garrison and, although Dales played well, they could not find the form of their first game. Shawn opened the scoring from a rebound only for Garrison to equalise. Shawn put us ahead and Alfred scored a cracking goal from the sideline. Garrison scored from a free kick and then equalised but it was Shawn who got the decider and Theo made some excellent saves. Won 3-2 but Theo could not stay for the final match. This was against another Garrison team. Luck had now deserted Dales. Shawn scored twice but Garrison equalised and it was they who got the decider. 2-3 loss but through to Finals Day second in their group. A fantastic result.

David Williams
01748 884650

davidwilliams@mowdenpark.co.uk

REETH AND DISTRICT GAZETTE LTD

Post Office News

Well, it seems as if banks are falling like flies in Richmond and Leyburn. However, fear not, for even if the local branch of your bank has closed, there is help at hand. Yes, here at the Post Office in Reeth, you can carry out most of your banking transactions.

This is nothing new: for sometime you have been able to pay in cash and cheques to most bank accounts via the Post Office, as well as withdrawing your money. And yet many people have still been travelling to Richmond solely to visit their bank when they could just as easily have come into the Post Office in Reeth.

Each bank likes to be different and the exact procedures for paying in money or cheques can vary from account to account; but the simplest thing to do is call in and find out how we can save you a trip to Richmond, Darlington or Northallerton.

Note also that this does not apply solely to personal accounts. If you have a business account you may also be able to do your banking via the Post Office. So why not call in and find out how we can help: You might just save yourself a lot of time and time, as they say, is money.

GREEN COMMERCE LTD. Established for over 35 years
Best quality hardwood logs
Kindling sticks also available
Free Local Delivery
Call David Fenwick on
Tel: 01833 650151
Mob: 07921 317630



Advertising in the Gazette
Full details from treasurer@reethgazette.co.uk

A.J. CLACHER LTD
Established 1961
PLUMBING & HEATING ENGINEERS

- Gas, oil and solid fuel central heating installations
- All aspects of plumbing and gas installations
- Boiler servicing and repair • Landlord Gas Safety inspections
- Bathroom installations and Plumbing • Heat Pumps and Solar Heating

Unit 38 Forge Way, Cleveland Industrial Estate, Darlington DL1 2PB
Tel. 01325 468372 • E-Mail info@ajclacher.co.uk
www.ajclacher.co.uk



Old Waiting Rooms
Self Catering
Hunmanby Railway Station (nr Filey)
Victorian Charm. Modern comfort.
Full weeks or short breaks.
Sleeps 2. Dogs welcome.
www.oldwaitingrooms.co.uk
Or ring Monica Bridge: 01723 892426

Dales Computer Services
For all your computer needs



Carol Haynes
Lairdwood Cottage
Carperby
Leyburn
DL8 4DB

Repairs - Upgrades & Maintenance
Software & Hardware problems

Home & Small Office Networks
Wireless and Wired Networks with shared internet

Website Design, Hosting & Email
Ongoing support or self-maintenance.
Hosting includes CPanel, PHP, MySQL support.

Affordable Onsite & Remote Support
for PCs and Mac computers
(remote requires working internet connection)

Monthly articles in local publications
Established Dales Business

www.dalescomputerservices.com
Tel: 01969 663798 or 07891 371280

OPEN ALL YEAR ROUND, EVERYDAY

SWALEDALE WOOLLENS

MUKER-IN-SWALEDALE, RICHMOND
NORTH YORKSHIRE



TAKE HOME A PIECE OF THE DALES

Call into our shop in Muker, Upper Swaledale and see what unique garments we have on display from hand knit cardigans, sweaters, hats, scarves & gloves to machine knit sweaters & cardigans for both ladies & gents. We also stock sheepskin rugs, slippers & gloves.

WE ARE OPEN EVERYDAY
Tel. 01748 886251

Celebrating 40 Years

The Quality is Legendary...
...The Choice is Endless.

Email: mail@swaledalewoollens.co.uk
or visit our website where you can order online:
www.swaledalewoollens.co.uk

Dales Reyno-Vations



General Building & Maintenance

- Property renovations / Roofing
- Kitchen fitting / Joinery
- Bathroom suites / Tiling
- Painting & Decorating
- Patios / Landscaping / Ground maintenance

Free estimates / Insurance quotes

No Job too small

D Reynoldson

11, Place Hill, Reeth, Richmond
North Yorkshire, DL11 6SD
01748884309 / 07792458801
Email dave.reyno@btinternet.com

Own your own piece of Swaledale...

SWALEVIEW PARK

From only £28,000

- The ONLY holiday homes for sale in Swaledale
- Beautiful and unrivalled riverside location at the head of Swaledale yet minutes from Richmond
- Showhomes and Lodges available for viewing on the park
- All inclusive price including all furnishings
- Superb specification
- Open since 1946, Swaledale's longest established, family owned park

Affordable luxury in Yorkshire's National Park





Telephone 01748 823106
Showhome open daily from 9.30 to 5pm

www.swaleviewpark.co.uk
info@swaleviewpark.co.uk

**SAMANTHA
LLOYD**

MARCH
31ST
LIVE AT
THE CB
INN
9PM ONWARDS

CLASSIC
MOTOWN
TO
PRESENT
DAY

ONLY
£7.50 PER PERSON

CALL 01748 884567 TO BOOK YOUR TICKETS



Scenic Breaks - Luxury Holiday Lets

www.swaleviewpark.co.uk

Brand new luxury static caravan for holiday lets. Warm and welcoming, 2 bedrooms, an en-suite double and a twin.

Complete kitchen with fridge freezer, dining area, lounge featuring an electric fire, TV with DVD & full central heating.

Wi-Fi available.

A quiet site ideal for exploring Swaledale and its surrounds, with river walks plus Richmond, Harrogate, York, Thirsk and Ripon all nearby. Also within reach of Whittby, Robin Hood's Bay and the East Coast.

Contact: Swaleview Caravan Park, Reeth Road, Richmond, North Yorkshire, DL10 4SF
Telephone: 01748 825106
Email: info@swaleviewpark.co.uk
Web: www.swaleviewpark.co.uk



She Knew Her Stuff

"Television won't last. It's a flash in the pan."
(Mary Somerville, pioneer of radio broadcasting, 1948)

Kim and Richard
Atkinson

WELCOME YOU
TO
THE BLACK BULL



REETH

The oldest inn in Reeth

Quality accommodation

Excellent food

(Very popular Sunday Carvery)

A fine selection of
Real Ales and Wines

And a warm welcome
Tel. 01748 884213



*Visit our unique, friendly
'gardeners' garden centre' for
plants, seeds, shrubs, trees,
compost, chemicals, tools,
garden furniture, pots, bird
food, accessories and more!*

SPRING BEDDING OFFERS

6 pack Pansy/Viola—5 for £10 /£2.50 each

Primrose Pot—6 for £5/£1 each

Tête-à-Tête Pot— 3 for £3 /£1.25 each

BATHGATE COMPOST RANGE

Unique formulations to optimise
plant development. 50 litre bags of
multipurpose are 3 for just £10

MOTHER'S DAY MARCH 26

Amaryllis Gift Packs, Planted Baskets,
Freesia Pots, Windowsill Herb Pots,
'Love the Glove' Gardening Gloves
(10% off our brand new range!*),
National Garden Gift Vouchers

Plus...

40% off Kids' Gardening Tools and Kits

10% off Burgon & Ball 'RHS' tools*

*offer valid until 26th March

Tel: 01969 625397

*Tuesday to Saturday— Open 10am to 5pm
Sunday—Open 10am to 4 pm Closed Monday*
Station Yard, Harmby Road, Leyburn DL8 5ET
wensleydalegardencentre2015@gmail.com
www.wensleydalegardencentre.co.uk



Computer Corner

With Carol Haynes of Dales Computer Services

Aging computers and other things

Over the last couple of weeks I have been asked what to do with old computer equipment that either doesn't work or needs to be replaced. I have also been asked if certain things should be replaced. Here are a few quick tips:

NOTE: Before you do anything unplug the computer/device from the electric and remove any laptop batteries - then press and hold the power switch for a few seconds to discharge any residual current. Some laptops, tablets and phones don't have removable batteries - it is probably a good idea to switch them on and let the battery fully discharge if possible.

1) Computers and Laptops

If you want to dispose of one of these you can take them to the local council recycling centre. If you are bothered about personal information on your computer being read by unknown people the simplest approach is to remove the hard disk (or disks) before you get rid of the computer.

This needs no more than a Philips screwdriver on most desktop tower computers - just take the side and look for the hard disk, pull the cables out of the back - remove the screws holding it in the case and it should slide out. Sometimes you will need to remove

both sides of the case to get to all the screws (usually four). Some manufactures (such as Dell) have quick release latches that you can press to slide out the hard disk and you don't need screwdrivers, other may mount the hard disk in a small cradle with a single screw to remove.

For laptops it can be a little more complicated for all in one computers and laptops as they are built to many different specs. Generally there is a panel that can be removed on laptops to reveal the hard disk - and it is usually no more than using a small screwdriver to remove a few screws and pull a plastic tab to slide the hard disk out. Some manufacturers are just plain awkward (Apple springs to mind) and you will need to find the instructions online how to even find the hard disk.

Once the hard disk is removed you can dispose of the computer - it might be worth keeping the hard disk in case there is anything you need to recover (try to avoid touching the electronics and wrap it in tinfoil).

If you don't want to keep the hard disk wait until summer and bake it in tinfoil in the bottom of a bonfire which will remove any personal info effectively. Make sure you only do this in the open air as they will produce fumes.

TAKE TIME TO RELAX!

I can cook delicious dishes ready for your table or freezer, from canapés through to desserts.

You can have quality homemade food ready and on the table with minimal effort.

Contact Sandie Bond
on 01748 884794

**Don't forget: The Gazette is online:
www.2dales.org.uk**

2) Tablets and phones

If you can remove SD cards (and your SIM card from phones) do.

Most phones and tablets have a restore to factory settings option. For iPhones and iPads you can do this using iTunes on your computer; for Android devices there is usually a button combination to press that will allow you to restore the device to factory settings. You will need to search for your exact model on the internet for instructions.

You can then dispose of the device at the recycling centre

3) Working devices you don't want

There are a number of charities that will accept working devices - but that doesn't mean you shouldn't take steps to make sure they are not cleaned of your information before donating them. IMPORTANT NOTE: Deleting things on a computer doesn't usually delete the information - it only removes the file name from the list of files. Data can be recovered so if you are donating a computer with a hard disk restore it to its factory settings - this isn't perfect but it makes recovering data a lot harder.

4) Is my device past it?

Really only you can decide that but it is worth considering the following ideas before binning it:

a) Check there aren't programmes and files you could live without and clean them up - making some space (especially on tablets and phones) can make a huge difference to how the device works.

b) For computers you can try getting your computer cleaned up to see if it will improve speeds etc.

If all else fails before you dispose of your device back up any important files and restore the device back to the factory settings as it was supplied to you. You may find you get a new lease of life.

Final comment: if you are still using Windows XP and Vista note that restoring your computer to factory settings will mean you lose years of updates and fixes - and you won't be able to update again as Microsoft no longer support those versions of Windows. If you are using XP or Vista now is the time to move on to a new computer.

That's all for this month. If you have any questions or ideas for articles feel free to call me on **01969 663798** or send me an email to:

carol.haynes@dalescomputerservices.com

The Healing Collective

Swinithwaite - Wensleydale

Are you feeling stressed, unhappy, anxious, overwhelmed or weary? Are you suffering from a physical illness, like back pain?

We offer a range of complementary therapies to help and revive you.

Reiki Reflexology Bach Remedies

Homeopathy Craniosacral Therapy

Emotional Freedom Technique

Shiatsu Counselling

Open sessions 1st Saturday of every month 10-4pm
Meet the therapists and have a FREE taster session

t: 0845 474 2383

info@healingcollective.co.uk

www.healingcollective.co.uk

Our therapy rooms are at the Coach House adjacent to Berry's Farm Shop & Cafe



Swaledale Mountain and Cave Rescue Team

We've had a busy few weeks with 7 incidents:

04/02/2017: (10) Sat 14.30hrs Team called out this afternoon to rescue an injured kayaker from below Kisdon Force, Keld. The injured person's friends had managed to get them to the waterside. A vertical haul of 25 feet from the gorge onto the ledge, then winched by the Coastguard helicopter. A great joint effort with farmers, residents, Police, Ambulance, Coastguard & MRT. A special thanks to all the folk at Keld & Chris & Mark for the use of the quad bikes.

04/02/2017: (09) Team called to assist Cleveland MRT with a missing person search. While our search dog was deployed on the surface, the team searched caves in the area. During the search body was located by Scarborough MRT.

01/02/2017: (08) Tues 17.00hrs The teams search dog & handler were called to assist Cleveland MRT with an

ongoing missing person search.

21/01/2017: (07) Sat 07.00hrs Team called by the Police to assist Cleveland MRT with a search for an overdue fell runner. As we arrived the missing runners was located, treated & evacuated by the teams on scene.

17/01/2017: (06) Tues 18.45hrs Team called this evening by the Police to rescue an injured competitor in the Spine Race. Treated on scene by event Dr. & medics then evacuated by the team from the Cam High Road on the Pennine Way above Hawes.

14/01/2017: (05) Sat 12.00hrs While 12 of the team were out ski touring in the Dales we were alerted to a disorientated cold walker on the summit of Great Shunner Fell. A quick warm up & a spare pair of gloves the walker was then able to walk back to the road with the team

13/01/2017: (03 & 04) Fri 00.00hrs Team placed on stand by to support the flood operations with Scarborough MRT. 2 shifts over 24 hours with a number of incidents dealt with.

Fund raising update:

Thanks to the following for their support:

George & Dragon, Hudswell £53.64

Wensleydale Creamery £153.02

Shop on the Bridge, Hawes £49.95

Lady Interior Decorator

Painting & Decorating,

Competitive rates, Free estimates, Friendly advice, Est 25 years

Call Yvonne on: 07838378836

Based in Richmond

Email: yvonesdecor@hotmail.co.uk



REETH AND DISTRICT GAZETTE LTD

Neeps & Tatties, Richmond £17.78
Ivy Cottage Tea Room, Reeth £75.32

Helmet update:

Over the last few months we have been raising funds to replace our out of service climbing helmets. Thanks to everyone's donations & supply from Fletcher Stewart Ltd of Stockport, we have now replaced all of our helmets. First outing was on the Kisdon rescue.

If you would like to help please contact **Jill 01748 886807**. Or drop an email to :

secretary@swaledalemrt.org.uk
or a message via our Facebook page.

**DON'T FORGET IF YOU NEED
MOUNTAIN OR CAVE RESCUE,
call the POLICE on 999.**

**They will call us & an ambulance
(if required).**

www.swaledalemrt.org.uk



**Wensleydale Creamery
Visitor Centre**

NEW Viewing Gallery

Interactive Cheese-making Viewing Gallery
with exciting info & behind the scenes
footage

Calvert's Restaurant

Spring Offer - any two courses £12.95
Available Mon – Sat

1897 Coffee Shop

Re-opens Saturday 4th Feb

www.wensleydale.co.uk
01969 667664



Beauty and tranquillity.

Quality and care.

Cat Hole Cottages | Cat Hole House | Thwaite
Richmond | North Yorkshire | DL11 6DR
Tel: 01748 886366

Discover our treasury of gorgeous
cottages in Swaledale and Arkengarthdale.

Well-equipped, stylish and individual,
our cottages offer guests a wonderful
holiday in the midst of superb scenery!

**To find your perfect cottage
call Judith on 01748 886366**

www.catholecottages.com
judith@catholecottages.com

Geoff Braithwaite

Property Maintenance

Painting & Decorating

Kitchen & Bathroom Fitting

Wall & Floor Tiling

Pointing & Patios

General Repairs

Fast, Friendly,

Reliable Service

Quality work guaranteed

Tel : 01748 886783

Let's Get Lyrical

Well, how were you on Glenn Miller? Judging by the wealth of entries, pretty hopeless. No-one came up with the right answers. My mother will be turning in her grave at the collective ineptitude of the Gazette readership as far as Glenn Miller is concerned. Still, at least she will be proud that her son knew them all.

The answers are:

- Pardon me boys, is that the **Chattanooga Choo Choo**
- Don't go walking down lovers' lane with anyone else but me - **Don't Sit Under the Apple Tree**
- She loves gin and I love rum and don't we have a lot of fun! - **Little Brown Jug**
- You know I just got paid I got my hot rod wheels, so if you wanna find out how it feels call me **Pennsylvania 6-5000**
- Way down south in Birmingham I mean south in Alabam' there's an old place where people go to dance the night away - **Tuxedo Junction**

The tiebreaker: Glenn Miller was born in 1904.

This month, something slightly different. All you have to do is identify the products that were being advertised with the following lyrics / slogans:

- Nuts whole hazelnuts

- They're tasty, tasty, very very tasty
- You can't put a better bit of
- Just one
- She flies like a bird in the sky
- ... cleans a big big carpet

If nothing else, one or two of them will give you an earworm for the rest of the day.

As for the tiebreaker: Without googling it, which product was being advertised when Britain's first television advert was aired? The type of product will do, rather than the specific brand.

With no winner last month, it's a rollover - £10.00 going to the charity of the winner's choice.

MAC

Brucie Bonus

Of the well over 300 songs he has written, have you ever wondered which are Bruce Springsteen's favourites? Wonder no more as I can reveal them to you, as revealed by Bruce in an interview while promoting his autobiography - which, by the way, is an excellent read. (Paul Stokes is going to write a review of it - aren't you Paul?)

"That's a tough one," Bruce told the audience when asked for his top five. "I guess for me ..."

Well, can you guess what he guessed? His top five songs are revealed on Page 27.

OVERTON HOUSE CAFÉ & SHOP, REETH

Light meals and home baking.
Eat in or take out. Orders taken.
Closed Sundays and Mondays
01748 884045
www.overtonhousecafe.com

Cosy Holiday Cottage For Two

Peaceful location with panoramic views
of Arkengarthdale.
Ideal for walking or just relaxing.
Tel: Shirley Gale 01748 884779
E-mail: shirley@swaledale.org

Fremington Village Hall

Newly redecorated and refurbished, the Village Hall (known locally as the Sunday School) is available to hire for all kinds of events, from regular classes, talks and community activities, to one-off functions like children's parties, lunches and dinners and special occasions such as wedding receptions and anniversary parties. The Hall has a small kitchen with electric cooker and microwave; toilet facilities including disabled toilet; and a small rear garden. The Hall is a registered charity run by a small and dedicated volunteer committee. You can book the Hall by phoning or texting the bookings secretary **Julie Allen** on **07704 872873** or by email at **fremingtonvillagehall@outlook.com**

Calvert & Jenkinson Ltd Building Contractors



All aspects of building work carried out from renovation to new builds, plastering to roofing.

Tel:

01748 825962

07837 955869

Email: cjbuildersltd@gmail.com

Company No: 6769263

WENSLEYDALE TREE & HORTICULTURAL SERVICES

(Est. 1995)

DAVID ALLEN (HND Arboriculture)



Fully insured (£5 million)

Professional tree work: felling, crown thinning etc undertaken to BS 3998

Petrol log splitter for hire
Woodchipper for hire

Tree stump removal

Hedge establishment and maintenance.

Supply /planting of forest and ornamental trees

Fruit tree maintenance. Weed control services

Tel. 01969 667364 Mobile 07811 576108

E-mail:

enquiries@treesinwensleydale.co.uk

www.treesinwensleydale.co.uk

HOUSE PORTRAITS

digital paintings from £30

07905 967969

maddygeorgeson@gmail.com



Message From The Swaledale Museum In Reeth

March brings students from Carmel College in Darlington to the Museum, investigating settlement characteristics, when Reeth comes under their analysis. We are delighted to create a special day for them using the resources of the Museum to assist their study, using photographs, oral history recordings, objects, archives and a walk round the village. Do you know of a school group that might benefit from our specialist holdings, and might want to join us in a bespoke designed study? Let us know.

We are preparing new window displays, opening this year on the theme of 'Now Then' connecting new and old objects that are familiar within the Dales household. Come and see how the humble whisk has evolved over time, and the many variations of the clothes peg. Meanwhile Anne Hewitt is busy creating wonderful textile works for the Upper gallery. Don't forget our Fine Art Auction on Wednesday 17th May, after the Friends of the Museum AGM, which gets our events programme off to a flying start.

Table Top Sale Reeth Memorial Hall

Saturday 22nd April 10 - 12.30

Anyone interested in donating tombola/ raffle prizes or cakes, and those interested in hiring a table (£8), please contact:

Jill Burdis 01748 880130

All proceeds to the continuing
Hall Improvement Fund.

We are gearing up for re-opening on 1st May, when we will be open every day from 10.00 am to 5.00 pm. If you would like organise a group visit after hours, just get in touch.

Keep an eye on our website and of course this Gazette for the latest news. If you want to sign up for our FREE e- newsletters that come out every few weeks with latest developments do let us know, and we will put you on the circulation list. For advance information on events, why not become a Friend of the Museum?

Friends of the Museum annual membership (single £10, joint £15, family £20) gives unlimited free entry to the Museum, discount on talks, and our twice-yearly Newsletter.

For more information contact:
museum.swaledale@btinternet.com
or telephone **07969 823232** or **01748 884118**.
Helen Bainbridge

Stewart Teale Landscape Gardener

All aspects of hard landscaping

General garden maintenance

Over 20 years experience

For a free estimate Tel:

01748 884705 – 07782849379

Crafts with Rosie @ Marwood Mellor Studio Reeth

Fun leisure workshops to discover the joys of creating with textiles, paints, paper, stitching, suitable for all ages.

See website for details:

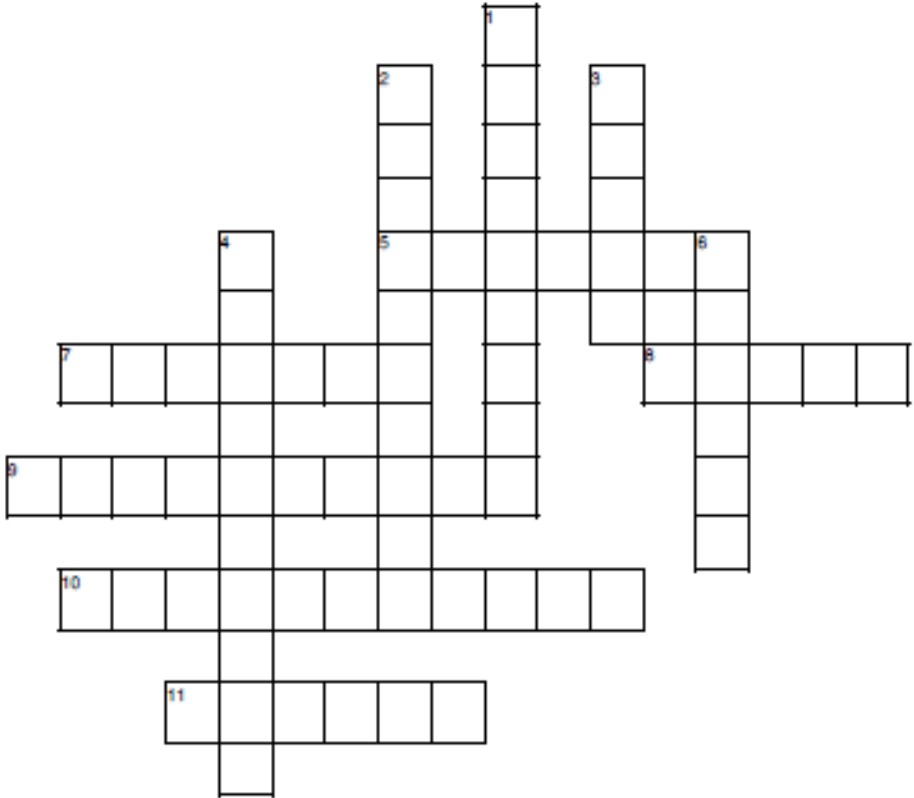
www.marwoodmellor.co.uk

Or telephone: **01748 884515**

REETH AND DISTRICT GAZETTE LTD

Swaledale Museum Crossword 1

I'm not sure if, by calling this crossword Number 1, Helen intends to do more.
We shall see on that one. But don't ask me what the answers are -
she hasn't told me.



Across

5. An early method of uncovering lead ore
7. Tool for working sheet lead
8. Worn on the feet before the invention of the Wellington boot
9. Swaledale dialect for a bee
10. Saint who gave his name to an annual fair in Reeth, revived in 1951
11. Name of a female sheep under 2 years before her first lamb

Down

1. Major building material used locally
2. Surname of the man who ran an Emporium in Reeth, now Fat Sheep
3. Name of the Dane who gave his name to Arkengarthdale
4. The period in which the first man-made objects survive locally
6. Lead ore found in Swaledale and Arkengarthdale



Keld Countryside & Heritage Events

Friday 28th April: Birds of Upper Swaledale Guided Walk. 13:00pm - 16:00pm. Approx 2 miles. Led by knowledgeable volunteer Rev David Peel observing birds in their moorland, woodland and river habitat. Please bring own binoculars. Sorry no dogs or children under 8 years old.

Rating: Easy - Moderate.

Saturday 29th April: Lead Mines of Beldi Hill Guided Walk. 13:00pm - 16:00pm. Approx 5 miles. A guided walk with lead mining enthusiast, Helen Guy. The history and processes of lead mining will be explored. Please bring a packed lunch. Sorry no dogs.

Rating: Moderate - Difficult (steep hillside paths).

Sunday 30th April: Waterfalls of the Swale Guided Walk. 13:00pm - 15:00pm. Approx 2 miles. The walk is led by Griff Fellows (author of The Waterfalls of England) and covers seven of the finest waterfalls in the Keld area. Dogs must be kept on a lead. Accompanied children welcome.

Rating: Easy - Moderate.

Booking is essential for these walks. They are **free events** but donations to Keld Resource Centre are welcome. Meet at the **Keld Countryside & Heritage Centre DL11 6LJ**.

For more information or to book please contact Helen Guy on **07790 401476** or **helen.guy@keld.org.uk**; or visit keld.org.uk

Future Events

Monday 1st May: Muker Silver Band 14.00pm Keld Public Hall.

Saturday 3rd June: Bibles, Books &

Beer Guided Walk 11:00am - 15:00pm.

Sat 1st July: Flowers of Upper Swaledale Ramble 11:00am - 15:00pm.

Swaledale Festival News

Malcolm Creese took up the post of Artistic Director of the Swaledale Festival in October 2007 and this year's festival marks his tenth in the role. Under his stewardship the Festival has received several local, national and international awards, and ticket sales have grown by three times. Malcolm has bought a number of innovations to the Festival, including the Young Artists Platform, numerous children's art and music projects, the annual Reeth Lecture and the Stationary Walk.

Malcolm's programme for 2017 includes appearances by the vocal group VOCES8, pianist Stephen Hough, the London Mozart Players, the National Youth Jazz Orchestra, Red Priest, the Unthanks, Urban Folk Quartet, Northern Monkey Brass Band, the cellist and reigning BBC Young Musician of the Year Sheku Kanneh-Mason, and a trio of world-renowned guitarists: John Williams, John Etheridge and Gary Ryan. "It's my strongest programme yet," says Malcolm.

Full details of this year's Swaledale Festival are now available to view online: <http://www.swalefest.org>

Rose Cottage

Just off the village green in Reeth

Sleeps 4

Dogs welcome

Tel 01964 562239

Email: rosecottagereth@gmail.com

Grot Spot Reeth

At times, the Recycling Centre in Reeth can get over-full and when it does we are very quick to complain about the Council for not emptying the bins often enough. But the Council cannot be blamed for the small number of people who just treat the area as a general dumping ground for their rubbish - rubbish which should be taken to the tip at Leyburn.

Obviously these people are far too busy to make the trip to Leyburn, but I wonder, why is their 'busy' more important than anyone else's 'busy'? Is it selfishness or arrogance which makes them think they can disregard the rules which the rest of us adhere to?

The Recycling Centre is for paper and cardboard, cans, glass bottles and plastic ones. Anything else is classed as



illegal fly-tipping.

Whoever it is who dumped the large blocks of polystyrene, the strips of large bubble wrap, large paint tin and bags of general household rubbish, perhaps you could write into the Gazette and explain your actions. Then at least, when the council takes this very useful facility away due to misuse, we will know who to blame.

BIG BREAKFAST... TAKE 2

Peru 2017 Fundraiser

At Reeth Memorial Hall

On **Saturday 15th** of April

9am until 2pm

Adult £6.50 Children (under12s) £4

Includes Full English breakfast

(Meat free breakfast available)

Unlimited Tea or Coffee

Toast with Jam and Marmalade



Tombola and Cake Stall

Donations for either tombola or cake stall would gratefully be accepted!

Matthew Short:

The Mill Cottage

Fremington

Phone Number: 01748 884636 or

07976836082

CAMPS[®]
international
ETHICAL JOURNEYS WITHOUT COMPROMISE





BUCK HOTEL

REETH



QUALITY EN-SUITE ACCOMMODATION

JOIN US FOR MOTHERS DAY,
SUNDAY 26TH MARCH.
MOTHERS DAY CARVERY AND
MOTHERS RUIN PUD £9.95
ALL MUMS GET A FREE RAFFLE
TICKET FOR A OVERNIGHT
PAMPERED STAY AT THE BUCK!



ST PATRICKS DAY –
MARCH 17TH
GUINNESS
PROMOTIONS AND
IRISH FOOD
7PM – 9PM

**NEW MENU FROM APRIL 1ST
NOW IN THE GOOD BEER GUIDE**

Don't pass the Buck...We promise we won't!

QUALITY SELECTION OF REAL ALES AND FINE WINES

DELICIOUS HOME MADE PIZZAS AND TAKE AWAY SERVICE AVAILABLE.
PARTIES, WEDDINGS AND WAKES CATERED FOR IN OUR FUNCTION ROOM.

TO BOOK A TABLE OR RESERVE A ROOM - CALL: 01748 884210



Gorgeous Cottages are the Letting Agency for Luxury Holiday Cottages in Yorkshire. Get in touch and find out how we can help your holiday home realise its full potential.



'gorgeous'

- [adjective]
1. strikingly beautiful or magnificent
2. (informal) extremely pleasing, fine, or good



GORGEOUS YORKSHIRE | GORGEOUS COTTAGES



www.gorgeouscottages.com



0844 736 6276



info@gorgeouscottages.com



Upper Swaledale Christian Aid Group

Our **AGM** is on Monday 6th March 2017 at 2.00 pm at Low Row URC. Everyone is welcome to attend.

Last year the North East was blessed with very generous Christian Aid supporters who continued to raise thousands of pounds for our partner organisations abroad. So, throughout Lent we ask you to 'Count Your Blessings' which this year has been inspired by the hymn, 'When I Needed a Neighbour Were you There?' Lent is the perfect time to reflect on how fortunate Christians are in the UK and to stand in solidarity with the poor.

A leaflet, 'Count Your Blessings' is designed to help people count their blessings during Lent and give to help people out of poverty. It is available in printed form, through the Christian Aid Website. For more information visit:

[www.christianaid.org.uk/getinvolved/
lent](http://www.christianaid.org.uk/getinvolved/lent)

The Christian Aid Week service will take place on Thursday May 11th at 7.30 pm at Low Row URC prior to Christian Aid Week which runs from May 14th - May 20th. The focus of the service will be on Christian Aid's work for refugees.

We need volunteers for the House-to-House Collection during Christian Aid week in May. If you are interested in helping in any way please contact **Pauline Oldershaw (886790)** or **Susan Allison (884366)**.

Pauline Oldershaw
Secretary

Upper Swaledale Christian Aid Group

VICTORIA DESIGN GROUP

Consulting Civil &
Structural Engineers
Tel: 01748 886717

All design work undertaken, whether your project is large or small.
Also structural surveys

www.vdg.co.uk

Fabric of Place Launch Event

Join artists Joanne, Serena and Graham as we launch our Slow Art artist residency project in Reeth on **Saturday 25th March** at Reeth Memorial Hall, 1.00pm - 4.00pm

- 1.00pm - 3.00pm - Fun workshops for the whole family. Use natural materials to make your own string; try your hand at creating textiles; or get a bit messy making something from clay. Workshops are open to everyone and are free.
- 3.00pm - Join us for a cuppa (and a biscuit or two) as the artists give a short presentation about their work and the project, *Fabric of Place*.

For more information about the project please visit:

[http://www.chrysalisarts.com/
programmes/fabricofplace](http://www.chrysalisarts.com/programmes/fabricofplace)

or contact Emily Wilson, Project Manager on **07834 529753** or email:

emily@chrysalisarts.com

Keld Public Hall

Domino and Whist Drive

Friday 10th March 2016

7.30pm

REETH AND DISTRICT GAZETTE LTD

Reeth Community First Responders: A Thank You



The Community First Responder scheme is a partnership between Yorkshire Ambulance Service NHS Trust and local groups of volunteers within their community. Reeth Community First Responders work as part of a dedicated team of volunteers whose aim is to reduce the number of pre-hospital deaths in the area by providing emergency care until the arrival of an ambulance response. We attend local emergency calls to patients who may have collapsed from cardiac arrest or have other potentially life-threatening conditions.

We currently have 10 members who are devoted to serving our community and although our numbers are well below an ideal, our aim is to give day and night coverage, when possible.

To which end, an awareness lecture with a raffle was held in Darlington entitled "Introduction to Life Support

with CPR & Defibrillation" and £114.00 was raised due to the generosity of local Swaledale businesses namely: Reeth Post Office, The Fat Sheep, Gorska, Dick Gillon Woodturner, The Old School (Muker) and Wilfred Deli & Pantry (Richmond) who donated the prizes. A big thank you.

If you are interested in finding out more about the Reeth Community First Responders or would like to join our group please contact either one of the co-ordinators;

Simon Radonicich: Tel 886453; or

Josie Kyme: Tel 884824.

Or the Community Defibrillation Trainer, Yorkshire Ambulance Service; Patrick Murphy: mob 07824 407955 / patrick.murphy@yas.nhs.uk

Simon Radonicich, Co-ordinator

NYCC HOME LIBRARY DELIVERY SERVICE

This service is provided fortnightly on Thursdays for Reeth and Upper Swaledale villages.

For elderly or disabled residents

Contact tel. no. 01748 824331

Please leave a message or phone
Colburn Library: 0845 4349502

REETH POST OFFICE . . . more than just a Post Office Reeth, Richmond, N. Yorks DL11 6SE Tel 01748 884201

Post Office

No fee Cash Withdrawals
Banking Services
Travel Money & Insurance
Phone Top Ups
Health Lottery

Gift Shop

Gifts & Cards & Stationery
Toys & Games
Local maps
Walking & guide books
Photocopying

Cornershop

Beers, Wines & Spirits
Sandwiches & Pies
Milk, Dairy & Meat
Fruit & Vegetables
Cakes & Biscuits & Crisps

SERVING OUR COMMUNITY www.reethpostoffice.co.uk

STUBBS ELECTRICAL

Your Local Electrical Service

- Rewires/alterations
- Showers/storage heaters
- Fire alarms/emergency lights
- Underfloor heating
- Fault finding
- Landlords' certificates
- PAT Testing
- Solar electric

Contact Stephen on:

T: 01748 822907

M: 07980 130014

E: stephen@stubbselectricaltd.co.uk

W: stubbselectrical.co.uk



Microgeneration
INSTALLER

BRAESIDE COTTAGE

Overlooking The Green, Reeth

Sleeps 8

Three bedrooms; two bathrooms

Private courtyard Beautiful cottage garden

www.braesidereeth.co.uk

or Tel 0114 2467599

SCIENCE TUITION

Dr Richard Sharp

Specialist Tutor For A Level Biology,

GCSE Biology, Chemistry, Physics, Additional
Science And Core Science.

Controlled Assessment Preparation

Very Reasonable Rates. Why Not Double Up

With A Friend At Same Rate?

sharpr1966@gmail.com

07943 715003 or 01748 884584

HOLIDAY COTTAGES

REETH

2 cosy holiday cottages ideally situated
just off the village green, Reeth.

Glenkobla sleeps 1-2 Cragside sleeps 4

Secure bike storage

Tel. **01748 884237**

E-mail: walkerg17@sky.com

The Hair Salon



Arkengarthdale Road, Reeth DL11 6QT

We offer a wide range of advanced
hairdressing services

Everyone welcome - including children

We stock Wella's System Professional (SP)
hair care products in the Salon. They are a
more personalised & specialist range that
can only be stocked by hairdressing
professionals.

If you have any concerns about your hair or
scalp, feel free to call in the salon for our
help and advice. We are very happy to help!

Open Tuesday – Saturday

Late night Wednesday

Tel: 01748 884627

THE OLD TEMPERANCE BOOKSHOP

Reeth, Richmond, DL11 6TE

Tel. 01748 884185

Christian Books, Cards & Crafts

Fairtrade Food

Beside the village green in Reeth



Opening times :

1.30pm - 4.00pm

Mon, Thurs, Sat

10.30am - 4.00pm Fri

(Market Day)

We sell REAL

Easter Eggs.

Grandparents Missing Out On Childcare NI Credit

Working-age people who give up their job to provide childcare for their grandchildren risk damaging their state pension entitlement due to failing to take up a little known benefit, designed to protect their National Insurance (NI) credits, according to analysis by insurer Royal London

The Specified Adult Childcare credit was introduced from April 2011 and is available to grandparents or other family members who care for a child under 12, usually whilst their parent (or main carer) is working.

It provides a class 3 NI credit for each week or part week a qualifying applicant cares for the child, in order to help build their entitlement to the basic state pension and certain bereavement benefits. There is no requirement to provide a specified number of hours of care.

However, a freedom of information request from Royal London to the HMRC regarding take up has found that only 1,298 people claimed the credit in the year to September 2016, less than the 1,725 who put in a claim two years earlier. Government figures suggest a total of 5,000 people have used the credit since its introduction.

The insurer estimates that more than 100,000 grandparents of working age could benefit from the scheme, and says HMRC should do more to raise awareness by, for example, including details when it communicates with mothers to provide updates on NI credits each year.

Data from the Office for National Statistics shows 1.3m working mothers with at least one child under 12 are relying on their own parents for childcare, although not all grandparents will be giving up their own employment to do so.

Steve Webb, former pensions minister and Royal London head of policy, said: 'If a working age grandparent misses out on one year of state pension rights because they are spending time with a grandchild instead of doing paid work, this would cost them 1/35th of the full rate of the state pension - or £231 per year. Over a 20-year retirement, this would be a loss of more than £4,500.

'Hardly anyone is claiming the credit. Given HMRC knows which mums are not using their NI credits because they are working and paying NI, it wouldn't be hard to alert them to the fact they could pass the credit on to the grandparents.'

Anyone who has missed on the scheme is able to make a back-dated claim as far back as 2011. At the time of its launch in 2011, the Department for Work and Pensions (DWP) said half of Britain's seven million working-age grandparents have a grandchild under the age of 16, while one in four working families and one in three working mothers use grandparents for childcare.

The proportion of grandparents who are of working age is set to grow as the retirement age gradually rises.

A spokesperson for the DWP said: 'These credits are available to people in a small number of specific circumstances. As with all credits, details of the specified adult childcare

REETH AND DISTRICT GAZETTE LTD

credits are well publicised on GOV.UK and are promoted through a number of consumer websites.'

Workers needed to have 30 years of qualifying National Insurance contributions to get the old state pension, but need 35 years of contributions to get the new flat rate state pension, since April 2016.

Dawn Clarkson

Dawn Clarkson Associates

Tel: 01969 624999

mail: dawn@dawnclarkson.co.uk

Bruce's Favourites

Born To Run

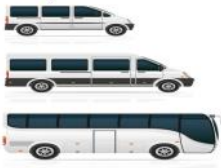
The Rising

Thunder Road

Nebraska

Racing in the Street

HARKERS & COACHES



Mini Buses & Coaches up to 35 Seats

&

Private Hire Taxis

Tel: 01748 884533

Mob: 07703 559959

Email: harkerscoaches@hotmail.com

We are a family run business offering reliability and compensative prices

PS & FM Terry – Leaholme, Reeth DL11 6SF



KINGS HEAD
PUBLIC HOUSE

Mondays to Thursdays

20% off your dinner bill or a free bottle of wine for two people *

§

Sunday Evenings

Join us for the BIG QUIZ

§

Fridays

Happy Hour 6pm - 7pm

A proper pub offering a warm welcome, great food and Yorkshire ales to friends and visitors from near and afar

Gunnarside, Swaledale

DL11 6LD

01748 886261

www.kingsheadgunnarside.com

*Valid until 31st March 2017

REETH AND DISTRICT GAZETTE LTD

Church Services March 2017

1st Mar.	10.00 am	St. Andrew's Grinton - service is in the lounge at Quaker Close flats	<i>Holy Communion with Ashing</i>
5th Mar.	9.15 am	St. Mary's Muker	<i>Eucharist</i>
	10.30 am	Low Row URC	<i>Holy Communion</i>
	11.00 am	Holy Trinity Low Row	<i>Eucharist</i>
	11.00 am	St. Edmund's, Marske	<i>Family Eucharist</i>
	11.00 am	Reeth Evangelical Congregational	
	2.00 pm	Keld URC	<i>Holy Communion</i>
	2.30 pm	Gunnerside Methodist	
	6.00 pm	<i>St. Andrew's Grinton Taize Service - a quiet service of light, music and sung chant</i>	
	6.30 pm	Reeth Evangelical Congregational	
12th Mar.	9.30 am	St. Andrew's Grinton	<i>Eucharist</i>
	9.30 am	St Michael's Downholme	<i>Morning Prayer</i>
	10.30 am	Low Row URC	
	11.00 am	Reeth Evangelical Congregational	
	11.00 am	St. Edmund's, Marske	<i>Morning Prayer</i>
	11.15 am	St. Mary's Arkengarthdale	<i>Holy Communion BCP</i>
	6.00 pm	St. Mary's Muker	<i>Iona Evening Prayer</i>
	6.30 pm	Reeth Evangelical Congregational	

Religious Society of Friends (Quakers)

Meetings are at Quaker House, 7 Grove Square Leyburn every Sunday at 10.30am.

Additionally on the 2nd and 4th Sunday of every month at the Scout Hut, Quakers Lane, Richmond at 10.30am.

For further information contact Judith Calow on **01748 884320** or www.dalesquakers.org.uk

Women's World Day of Prayer 3rd March 2017

The service this year has been written by Christian Women of the Philippines. The service will take place in towns and villages throughout the world. Our service is at 2.30 pm at Low Row URC and everyone (men, women and children) are invited to join us. The theme is 'Am I Being Unfair to You?' If you would like a lift to the service, please ring Pauline on 886790. We do hope you will come.

REETH AND DISTRICT GAZETTE LTD

Church Services March 2017

19th Mar.	9.15 am	St. Mary's Muker	<i>Holy Communion BCP</i>
	10.30 am	Low Row URC	
	11.00 am	Reeth Evangelical Congregational	
	11.00 am	Holy Trinity Low Row	<i>Eucharist</i>
	11.00 am	St. Edmund's Marske	<i>Holy Communion</i>
	2.00 pm	Keld URC	
	2.30 pm	Gunnarside Methodist	<i>Holy Communion</i>
	6.30 pm	Reeth Evangelical Congregational	
	6.30 pm	St. Mary's Arkengarthdale	<i>Iona Evening Prayer</i>
26th Mar.	9.30 am	St. Andrew's Grinton	<i>Eucharist</i>
	9.30 am	St Michael's Downholme	<i>Holy Communion</i>
	10.30 am	Low Row URC	
	11.00 am	Holy Trinity Low Row	<i>Mothering Sunday Service</i>
	11.00 am	Reeth Evangelical Congregational	
	11.15 am	St. Mary's Arkengarthdale	<i>Mothering Sunday Service</i>
	2.00 pm	St. Edmund's Marske	<i>Devotions</i>
	6.30 pm	Reeth Evangelical Congregational	

<p>The Methodist Minister for the two Dales is Rev. Les Nevin, who can be contacted on 01748 823149 or by email: les.nevin@icloud.com</p>	<p>Rev David Levell minister of Reeth Evangelical Congregational Church can be contacted on 07582 575815 or by email through the church website at www.reethecc.co.uk</p>
<p>The Reverend Caroline Hewlett, Vicar of the Parish of Swaledale with Arkengarthdale, can be contacted on 01748 884706 or by e-mail at carolinejhewlett@btinternet.com</p>	<p style="text-align: center;">Roman Catholic Services For information contact Father O'Neil on 01748 822175 www.stjosephsfx.co.uk</p>
<p>The United Reformed Church ministers are Revd Stephen Collinson and Revd Hilary Collinson. They can be contacted on 01748 821586 or revscollinson@outlook.com / revhcollinson100@outlook.com</p>	

Good Friday Walk

A Hike – A Pilgrimage – A Witness The Stations of the Cross

Christians Together in Swaledale invite you to join a walk with simple Stations of the Cross on Friday 14th April. Everyone is invited to take part, for all or some of the route - children and dogs are most welcome.

8.00am - Assemble for pre-booked Communal Transport at Grinton Church

8.10am - Transport leaves for Keld

8.55am - Assemble at Keld URC for safety chat.

9.00am - Short Service at Keld URC; leave 9.10am

10.30am - Service at St. Mary's Muker, leave 11.00am

12.30pm - Gunnerside Methodist Church - lunch stop.

1.10pm Short - Service at Gunnerside Methodist Church

1.25pm - Assemble and off.

3.30pm - Low Whita Bridge

5.00pm - Arrive Grinton (Hot X buns.)

5.30pm - Service in St. Andrew's Grinton

Post service - transport back up the dale, as far as Keld, as required.

Total mileage - 12.5 miles (ish).

Strong footwear and waterproof clothing required. Dogs are welcome. To protect stock and also for the safety of the walkers **DOGS MUST BE KEPT ON LEADS AT ALL TIMES.**

The organisers will lead the walk; however participants are responsible for their own safety. The precise route is subject to change dependent on conditions on the day. If the weather is really bad the services will take place as advertised, but there will be no organised walk.

Please note times at Grinton, Keld and Gunnerside. For transport up or down the dale, please book a place. Tel Peggy Purver 01748 884963 or email tutil@btinternet.com. (There will be a small charge for transport.)

Christians Together in Swaledale Lent Meetings 2017

All meetings will be held on Tuesday evenings starting at 7.30pm. You may wish to come to all of the sessions, or drop in to one or two of them. You may find it helpful to bring your own bible to each of the sessions. The sessions are all based upon some of the many questions, which are recorded in the New Testament as being asked by Jesus. The sessions are intended to be an opportunity for us to reflect upon what these questions mean to us, and how we might answer them today.

Session 1: 14th March 2017. Low Row URC. Questions around Invitation: What? Among the questions to consider will be: 'What are you looking for?'

Session 2: 21st March 2017. St Mary's Arkengarthdale. Questions about Identity: Who? Among the questions to consider will be: 'Who do you say I am?'

Session 3: 28th March 2017. St. Mary's Muker. Questions around the meaning of life, the question of Faith. Where and Why? Among the questions to consider will be: 'Where is your faith?'

Session 4: 4th April 2017. Gunnerside Methodist Church. Questions around Discipleship and Passion. Me? Among the questions we will consider will be: 'Will you lay down your life for me?'

Holy Week Service 11th April 2017.

Fremington Village Hall.

James Peacock



Solid Fuel Merchant Bainbridge

Good quality fuels at
competitive prices.

Deliveries to Wensleydale,
Swaledale and Coverdale.

No delivery too small.

Tel. 01969 650212/650465

Email:

james-peacock@btconnect.com

www. james-peacock.co.uk

P Bellwood Joinery and Building Services

Quality, Local, Reliable Time-Served Craftsman

www.paulbellwood.co.uk

07964 051 004

paulbellwood@aol.com

Bespoke Joinery

UPVC & Timber windows
and doors

Kitchen Fitting

Decking

Plastering

All aspects of building work



Fully insured.

References available on request.

REETH VILLAGE STORE

We supply a wide range of items
including:

locally baked bread, pastries, cakes,
fresh fruit & vegetables, dairy
produce, soft drinks,
ice cream, household goods,
confectionery, tobacco and greeting
cards.

Electronic phone card top up and
debit/credit card facilities.

A fine selection of
wines & spirits.

Daily and weekend papers.

Opening Hours

Mon-Fri 7am-7.30pm

Saturday 7am-7pm

Sunday 8am-4pm

Tel: 01748 884552

R. & W. GIBSON & SON Ltd.

CERAMIC WALL & FLOOR TILERS

SHOWROOM NOW OPEN

Monday - Friday: 9.00 am - 4.30pm

Saturday: 10 am - 1 pm

(or by appointment)

At Borough Road,

Gallowfields Trading Estate

DL10 4SX

Tel. 01748 - 822682 (Home)

Tel. 01748 - 821909 (Showroom)

"We cover the Dales"

**Reeth Memorial Hall
Events**

Monday 13th March at 7.30pm: **Reeth Memorial Hall AGM.** Please come and join us and let us know how the Hall can better serve the needs of the community. All ideas, help and support are very welcome.

Friday 24th March at 8.00pm: Rag Mama Rag - one of Europe's finest Country Blues duos play Henderson Acoustic Guitar, National & Dobro Resonator Bottleneck Guitars, Weissenborn Acoustic Lap Steel Guitar, ukulele, harmonica, washboard and percussion with fine vocals. Their varied repertoire encompasses Mississippi Blues, East Coast Ragtime sounds, early White Country tunes, original compositions, and many other regional styles of the 20s and 30s period. Tickets £12 (£14 door)

Friday 31st March at 8.00pm: The In Concert Band with Colin Bailey present "Movie Magic". Colin Bailey and Friends return for a magical evening of music from the movies. Featuring Disney classics and blockbuster hits such as Born Free, Nine to Five, On The Street Where You Live, Pretty Woman, You Got A Friend In Me and many more... This feature presentation of live music has something for everyone to enjoy. See www.blueboxt.co.uk Tickets £10 (£12 door)

Friday 21st April at 8.00pm: **Tania Opland & Mike Freeman** - Tania is from Alaska and Mike's from England, and between them they play hammered dulcimer, fiddle, guitar, recorder and whistle, excellent percussion, sing, and have a wonderful stage presence. Tickets £12 (£14 door)

Thursday 25th May: Lady Maisery who create some of the most exquisite, thrilling vocal harmony work in the English folk scene. With their unique approach to harmony singing and striking arrangements of both traditional repertoire and original compositions, Lady Maisery combine banjo, harp, concertina, accordion and foot percussion. The trio are one of the foremost English proponents of "diddling", a form of singing without words which is a perfect showcase for their sheer musicality. Support by Jimmy Aldridge & Sid Goldsmith: "To be a great folk singer, you have to be a great storyteller, as Jimmy Aldridge and Sid Goldsmith are clearly aware. The duo are both fine singers and multi-instrumentalists." (The Guardian). Tickets £13 (£15 door)

Tickets available from **Reeth PO** or phone **John Little (01748 884759)** or visit: www.reethmemorialhall.co.uk.

Tickets half price for under 16s.

John Little

TREVOR J. HIRD
ELECTRICAL CONTRACTOR
No job too small **FREE** estimates
PAT Testing Specialist
Telephone 01748 832238

TO LET
1 Bedroom traditional cottage
in Langthwaite
Unfurnished
Tel 01748 884007 or
07807 148447
email mikeh10@fsmail.net

Hudson House

Rooms for hire

Suitable for meetings, lectures, talks, training or social events.

The Meeting Room - maximum of 30 people.

The Meeting Place (evenings only) – maximum of 10 people.

Access to PCs, Internet, printer, photocopier and laminator.

The Orchard Gallery for hire

Suitable for exhibitions of paintings, photographs and other artwork.

Own entrance through the garden.

Sales can be handled for you.

For prices (special rates for community use), bookings or more information please contact

Jill May on 01748 884 485 or

admin@hudsonhouse.info

“Please use this valuable community asset”

WANTED - Customers, no previous experience necessary, at:

DALE FARM TOYS & BOOKS

Dales Craft Centre, Reeth DL11 6SP

- Equestrian, Country, General, Children's & Local books.
- Specialists in signed copies
- Gifts, stationery & cards
- Extensive range of quality toys - Bruder, Britains, Breyer, Schleich, Ride on Toys & much, much more.

Tel: 01748 884909 / 07790 480211

Email: info@equestrianbookfair.com

Web: www.equestrianbookfair.com

NORTHERN WALLS

DRYSTONE WALLING

& LANDSCAPING

Master Dry Stone Waller

Former National Trust

gardener with 20 years

experience

City and Guild Certificate in

Horticulture

www.northernwalls.com

Tel 0795 148 1239

MCGARRY & CO SOLICITORS

Friendly local legal advice on :

- Wills
- Probate and Administration of Estates
- Powers of Attorney
- Nursing and Residential Home Costs
- Agricultural Matters
- Land Transactions

Home or farm visits

21 Galgate, Barnard Castle,
County Durham DL12 8EQ

Tel: 01833 600160

Market Place

Hawes

DL8 3QS

Telephone: 01969 666290

Email : office@mbmcmcgarry.co.uk

Regulated by the Solicitors Regulation
Authority

REETH GARAGE LTD.

**ARKENGARHTHDALE ROAD,
REETH, RICHMOND,
NORTH YORKSHIRE.
DL11 6QT**

**VISIT OUR AMAZING
FORECOURT SHOP**

**CLASSIC COUNTRY
CHECKED SHIRTS**

Show this advert to get 10% off

HOGS OF FIFE

FABRIC HIKING BOOTS

Only £39.95

GARDENERS

We stock compost, multi-
purpose plant food, Tomorite
and weed killers

HOME DECORATORS

we have paints, emulsions,
brushes, fillers, silicones and
wallpaper adhesives

HOUSEHOLD CLEANERS

Detergents, cleaning liquids,
bleaches, cloths and sponges

TEL. 01748 - 884243

EST. OVER 60 YEARS

M.W Waste Services
Environmental & Drainage Specialists

Septic Tanks Emptied & Cleaned
Blocked Drains Cleared Fast
Grease Traps & Interceptors Emptied
Soakaways Rebuilt & Repaired
Gully Emptying & Street Cleaning
Refuse Collection
Septic Tanks Installed
High Pressure Drain Jetting
Mobile Steam Cleaning
Sewage Plant Maintenance
Industrial & Domestic Work Carried Out

Low Hang Bank Depot
Melsonby
Richmond
North Yorkshire
DL10 5NQ
Tel: 01325 377860/377850
24/7 Call Out
[Http://www.mwwaste.co.uk](http://www.mwwaste.co.uk)

Clear Your Blocked Drains Fast With Our High Pressure Jetter
Free Quotes & Estimates

**Property Restoration,
Improvements & Maintenance**

Darren Chadwick, Keld (Est. 2001)

General Building, Plumbing, Roofing,
Bathroom & Kitchen fitting
Floor/wall tiling, Joinery, Plastering,
Decoration, Damp Treatments
UPVC door and window fitting and repairs.
Fireplaces, flues and stove installation.
New: Commercial, Agricultural and
Residential spray and coating service
(decorative or protective) for large wood or
metal buildings or internal/exterior
decoration.

**Free Quotes and advice
always available.**

Tel: 01748 886698

07791 363285

Email: darrenchadwickbfc@aol.com
www.darrenchadwick.com



THE GARDEN ROOMS

AT TENNANTS



Café • Restaurant • Exhibitions • Events • Gift Shop

OPEN SEVEN DAYS A WEEK | FREE PARKING | FREE ADMISSION*

*Some events have an admission charge - please check our website for details



The Garden Rooms at Tennants, Leyburn, North Yorkshire DL8 5SG
01969 621146, info@tennantsgardenrooms.com
www.tennantsgardenrooms.com



JEREMY MOON

— DECORATOR & PAPERHANGER LTD —

Established 1981

Quick turnaround for holiday homes and lettings

Fully insured

Reliable and trustworthy tradesman

High class decorating at affordable prices

References available upon request

Call Jeremy for a free quotation

T: 01748 880 155

M: 07876 764 812

Email: JEREMYLMOON@BTINTERNET.COM





KARL LONGDEN PLUMBING

Reeth, North Yorkshire

karllongdenplumbing@yahoo.com

Tel. 01748 880364

Mob. 07969 329893



24 HOUR CALL OUT SERVICE



Imagine
Dry Carpet Cleaning
"no soggy carpets or wet dog smell in your home"

You will ♥ our dry cleaning system!

Have 3 PIECE SOFA CLEANED not FREE
and FREE floor cleaned of your choice + Free Stain Guard!

- Spills & spots - gone
- Smells & odours - removed
- Deep cleans & lifts carpet pile - like new

FREE spot & stain remover with every clean

We also clean...

Upholstery

Leather & Fabric with super fast drying

Hard Floors with Anti Slip Coating

Tiles inc Grout • Stone Karndean & Amtico

Locally based
You can call us for FREE on
0800 180 49 44
zerodrytime.com

Book Early for Christmas
zero dry time
Dry Carpet & Upholstery Cleaners

WELCOME TO Swaledale

S A B F
Swaledale & Arkengarthdale Business Forum

Members, get assistance to enhance or update your entry
Non-Members, send your details for a basic entry

visit our website
www.swaledale.org

Packed with useful information for visitors and locals alike, including a comprehensive services directory

Swaledale Footcare
Meg Squires MCFHP MAFHP
Home Visits Including:

- Toenail Cutting
- Corn Treatment
- Removal of Hard Skin and Calluses
- Treatment of Thickened and Fungal Nails

Phone Reeth: 01748 884795 or Mobile: 07929065602
Email meg.e.squires@gmail.com

Member of the British Association of Foot Health Professionals



MEMBER OF THE SMAE INSTITUTE



Arkengarthdale Parish Council January 2017

Matters arising: The possibility of building affordable houses on the car park land was discussed in great detail. Our chairman together with councillors Lundberg and Watkins attended a meeting at RDC where this was discussed. The latest news was that there is some new government funding available for affordable homes, however this was only for larger communities and groups that could take full control of the projects. This would not be suitable for Arkengarthdale. Richmond Council is continuing to look into the viability of our project and will let us have an update before our next meeting in March.

Damaged wall in Arkle Town: The clerk said she had reported the damage in November but nothing had happened despite promises that the wall would be inspected and repaired. The clerk will chase this up.

Work done on the bank of the Arkle Beck: Councillors were pleased with the work and the speed in which it was carried out. Thanks were expressed to the contractor Peter Iveson for his efficient service; also to Michael Briggs from the National Park, for his help at the start of the project and throughout the work. Thanks were also expressed to all those who helped and those who contributed towards the cost.

Correspondence: RDC wrote to say that the new times and days for the refuse collections will begin after the 16th January. This is to save money and reduce the number of vehicles needed.

The Yorkshire Dales National Park sent a statement of adoption for the local plan 2015-2030. A number of changes were introduced at the suggestion of the inspector, Mr. Simon Berkely, who was appointed to assess whether the plan was sound.

A letter was received from BT about the two telephone boxes in the dale. They were making arrangements to have them removed. After consultation with the chairman, the clerk wrote again to Mr. Featherstone at RDC to protest. Councillor Beal said that BT has now withdrawn the threat of removal and that should hold for around another five years.

Planning: The Yorkshire Dales National Park Authority have approved the application for the three-day motor cycle trial until the 30th September 2021.

Applications were received for alterations and to change the windows at Plantation Cottages, Stang Lane, Langthwaite. This property belongs to our chairman's family and so he declared an interest and took no part in the discussion. A similar application was received for the adjoining property, Watsons Cottage, Plantation Cottages, Stang Lane, Langthwaite. The clerk was asked to write to the planning department in support of the applications.

County councillor John Blackie has advised that he has a small amount of money that could be made available to support any suitable local projects. Councillors will investigate potential projects where some of the money could be used.

The date of the next meeting is the 6h March.

Muker Parish Council
January 2017

Matters Arising:

Baby Changing Facilities: RDC has fitted a baby changing unit in the disabled toilets in Muker.

Removal of Phone Boxes: None of the phone boxes in the Parish are to be removed.

Defibrillator Batteries: The Electronic pads had now been replaced in all three defibrillators. It was agreed to order two batteries.

Water running down the road at Ivelet: Highways had undertaken a site visit and reported that it did not meet with their criteria for repair.

Bin at Guide Posts: Gary Hudson of RDC had investigated the missing bin and said that it had been taken away for repair.

Finance: A cheque was raised to pay for three sets of Electronic Defibrillator Pads.

Highways: Cllr Calvert raised the issue of an area of road several hundred yards west of the Tan Hill turn off on the B6270. Wooden posts had been hit by a vehicle and had been damaged. The road narrows at this point and Councillors felt that it was a dangerous stretch of road, which required more adequate barriers or at best the wooden posts to be repaired.

YDNPA Local Plan: Article 4 Direction: The YDNP have made an Article 4 Direction which if confirmed will remove 'permitted development rights' that would otherwise allow light industrial premises to be converted to dwellings without full planning permission. There is now a 6 week consultation within which interested

parties can make representations. Full details can be found on the YDNP website.

Planning Consultation: Birkdale Farm: A retrospective planning consultation had been received there were no objections from the Parish Council. Planning Permission had been granted for Gill Head farm Satronsidge.

YLCA: WW1 Beacons: The Chairman read our correspondence regarding: 'Battles Over' A Nations Tribute and WW1 Beacons of Light 11 November 2018. 1000 WW1 Beacons of Light will be lit at 7pm on 11 November 2018 and will represent the 'light of hope' that emerged out of the Great War. If anyone has any interest in the Parish taking part in this initiative please contact the Parish Clerks Alison or Nick at: enquiries@mukervillage.co.uk or Tel: 01748 886409.

Tree Beck side: Cllr Whitehead read out a letter from a resident of Muker regarding their concerns about a tree on the Becksidge. This matter is to be passed to the Muker Moor Committee. Clerk to contact Muker Moor Secretary.

Defibrillator, Tan Hill: A request had been made regarding placing a defibrillator at the Tan Hill Pub and the Parish Council have been asked whether they could help in applying for a grant for funding for the defibrillator. Cllrs were in agreement that this was a good location to have a defibrillator due to its isolation and the number of people passing through and agreed to help in applying for a grant if possible.

Next Meeting: Thursday 16th March 2017 at 7.30pm

Alison Stringer

TLC@Gunnernside

The Thursday Ladies Club will meet at Gunnernside Village Hall on **Thursday 23 March at 7.30pm** for a pie and pea supper accompanied by a generous serving of chit chat and a large dollop of laughter.

Visitors very welcome.

Elizabeth Bedford

Upper Dales Family History Group

This month's speaker is genealogist Kate Hurst on 'A Priest in a Tree'. Based on Kate's research into her own family history this talk is an overview of the anti-Catholic legislation which affected the lives of English men who trained as priests between the sixteenth and nineteenth centuries, illustrated by the experiences of five members of the Hurst family and a list of useful resources. The talk is at 2.00pm in Fremington Sunday School on Wednesday, March 22nd and admission for non-members, who are very welcome, is £2.00.

For more details or to check for cancellations contact 07432677783 or email: moverley.yorkshire@outlook.com

Tracy Little

Reeth & District Community Sports Club January Draw Winners

1st	181	Stu Clarkson
2nd	287	Stephen Calvert (Reeth)
3rd	179	Jack Alderson
4th	298	Tom Bagnall

Support the Reeth & District Gazette

Order your printing from us and we will credit 10% of the value of your order to the Gazette account at no extra cost to you!

Quote Gazette when ordering

Booklet Printing

- Reports
- Manuals
- Brochures
- Catalogues
- Newsletters

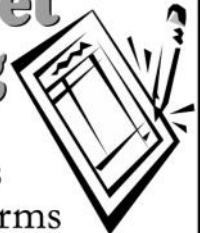


Saddle Stitched - Perfect Bound - Wire Bound

From your computer files or hard copy

NCR set Printing

- Invoices
- Estimates
- Order Forms



Fast Turnaround - Padded - Loose Sets



Reflections
PhotoGraphic
Services

Tel: 01833 690733

www.refprint.co.uk

email: sales@refprint.co.uk

REETH AND DISTRICT GAZETTE LTD

Reeth Parish Council January 2017

Charity Cycle Ride: A charity event raising money for water aid would be given permission to set up a feeding station for entrants on the green on July 1.

National Park: Members noted that Allen Kirkbride from Askrigg and Low Abbotside parish council had been elected as the Richmondshire parish representative to the YDNPA following the resignation of Coun Harold Brown.

Mobile phone coverage: No further news had been received on the public consultation over a structure on the sports field to carry an additional transmitter.

Payphones: Following objections from the district council no payphones in the area would be removed. As a result of Coun John Blackie's correspondence with BT on the matter it had been discovered that a number of public phones listed for removal due to low use were actually out of order, some for several years, in spite of repeated requests for repairs. These were now being dealt with.

Polling station: Following the closure of Reeth Methodist chapel, the district council had adopted the Memorial Hall for use as a village polling station.

Boundary commission: The commission was looking at a possible reorganisation of local ward boundaries which would reduce the number of district councillors.

Defibrillator: The clerk would follow up the possibility of installing a defibrillator in or adjacent to the phone box in Healaugh.



Street lights: Coun Frankland reported that a number of lights were out of order including one in Langhorne Drive which had still not been repaired in spite of having been reported several times over a period of 18 months.

Village green: It was hoped that the remaining posts and chains to protect vulnerable areas would be fixed in the near future.

Youth Club: A cheque was made out to the Youth Club to cover the donation promised in advance.

New website: Coun Gale was in the process of setting up a new website to host parish council papers and reports.

Maintenance: Repairs were needed to loose flags near the Bottom Shop and to the wall of the pound. Some drains were still overflowing, in spite of having been cleaned out, as the gullies between them were blocked.

Astronomy event: The local astronomy group had requested permission to put up telescopes on the green for a Dark Skies event.

Memorial bench: An enquiry had been received about placing a memorial bench on the green.

Tracy Little

REETH AND DISTRICT GAZETTE LTD

WANTED:

Old Shotgun Cartridges

Collector is looking to purchase single items, boxes, collections; also loading tools, cartridge bags.

Any old shooting items.

01986 892071

Langthwaite - Arkengarthdale

RED LION INN

Free House

Real Ales — Bar Snacks

Books & Maps

Tel. 01748 884218

Carvoeiro, Algarve, Portugal

Spacious well-equipped ground floor apartment, sleeps 5.

Quietly situated on a small low-rise development with five pools.

Within strolling distance of this vibrant, friendly village with its lovely beach and lots of excellent restaurants.

Golf, tennis, walking or just lazing by the pool.

Wood burning stove for cosy winter lets.

Please contact Lee on 01748 884473 for details.

Property Maintenance & General Building

Building work & property maintenance undertaken

Plumbing, tiling, plastering

Kitchen & bathroom fitting

Joinery works

Small jobs welcome

Free No Obligation estimates

Also detail plans prepared for planning applications

Contact Gary

Tel. 01748 886691 / Mob. 07896 147207

E-mail g_staines@sky.com

MICHAEL GUY ELECTRICAL

FULLY QUALIFIED ELECTRICIAN

Over 14 years experience working in the dales in all areas of electrical work.

From an extra socket to a complete rewire; underfloor heating to portable appliance testing, I offer a reliable and competitive service.

Contact Michael on:

T: 01748 886097

M: 07980130017

E-Mail: michaelguy25@hotmail.co.uk

ELECSA APPROVED CONTRACTOR

CHARMING OLD COTTAGE IN THE CENTRE OF REETH (sleeps 6+)

Open fire & background heating.

Fully fitted kitchen, dishwasher, fridge/freezer.

2 bathrooms, 2 double bedrooms, 1 twin bedroom & attic play area/fourth bedroom with 3 single beds.

Private, secure, rear courtyard area.

Dogs welcome.

Contact Denyse on 01740 631470 or

e-mail denyse00@btinternet.com

www.holidaycottageswaledale.com

S.J.R Plumbing Services

For all of your domestic

Plumbing requirements.

C & G/Advanced C & G Qualified

Reliable With Very Competitive Rates

Based in Reeth

01748-884036

Or 07977-297563



**Ballet for boys and girls
from the age of 3 years.**

**Modern Dance/Jazz
for children and teenagers.**

Tap for children and adults.

**For more information please
contact:**

Janet Seymour LRAD

Tel: 01748 884 677

Mobile: 07971 282 566

www.swaledaledance.co.uk

Ghyllfoot, Gunnerside

Fully Licensed Tea Room & Bistro

Open 10:30 – 5.00pm

(Closed Tuesdays)

Bistro open Wed & Sat evenings.

Traditional Sunday lunches served.

(Booking for both the above advisable.)

Curry takeaway 1st and 3rd Monday

of each month - 6.00pm-7.00pm.

Functions for up to 45 catered for.

Check our website for monthly,
special events.

Enjoy home cooked food in
pleasant surroundings.

Call us on (01748) 886239

E-mail: enquiries@ghyllfoot.co.uk

Visit: www.ghyllfoot.co.uk



**Dawn Clarkson
Associates**

Accountants and Business Advisors

Minding your business

- Company Accounts
- Sole trader & Partnership Accounts
- Letting Accounts
- Construction Industry Scheme Returns
- Tax Returns
- VAT Returns
- Payroll & Auto-enrolment
- Xero Accounting Software
- Business Start-ups
- Business Coaching

ESTABLISHED REPUTATION FOR SERVING SMALL BUSINESSES

A small practice offering a personal and professional service.

We are your local Xero accounting software advisor,
here to help make your life easier.

Tel: 01969 624999

www.dawnclarkson.co.uk

Email: dawn@dawnclarkson.co.uk

Twitter @DClarksonAssoc

National Park Ranger Service Update

As you may know, the Yorkshire Dales National Park increased in area last August by almost a quarter. The total area of protected landscape is now 841 square miles. The extension area now includes the northern Howgill Fells, Wild Boar Fell & Mallerstang and the limestone terraced area of Great Asby Scar as well as the fells around Middleton, Casterton, Barbon and Leck. In fact 1% of the Yorkshire Dales National Park is now in Lancashire.

The YDNPA Ranger Service will eventually manage the public rights of way network within the new areas of Cumbria and Lancashire. To accommodate the additional 300 miles of new routes we have reorganised the Ranger Service into three areas:

- The 'South' (Craven District and Lancashire);
- The 'West' (Cumbria);
- The 'North' (Richmondshire district).

In the North team we have taken on two new rangers: James Firth, from Leyburn, who will work in Wensleydale and Suzannah Barningham from Low Row, Swaledale, who will be in the Cumbria area of the National Park. Both these new recruits were formerly Ranger Apprentices so it's great to have them back in the service.

Within the Northern Dales team we now have;

Area Manager - Matt Neale

Area Ranger Swaledale &

Arkengarthdale - Michael Briggs

Access Ranger Swaledale &

Arkengarthdale - Ian Broadwith

Area Ranger Wensleydale - Nigel Metcalfe

Access Ranger for Upper Wensleydale - James Firth

Access Ranger for Lower Wensleydale - Paul Sheehan

And our hardworking, if a little too chatty, apprentice - Jack Banks.

Over in the 'West' (the Cumbria part), we have a small office and workshop in Orton, near Tebay. The Area Manager is Steve Hastie and there are 3 rangers based there.

We will continue to provide updates on our work during the year through local newsletters. There are various ways we can be contacted:

- By email using the format below; just substitute the appropriate name for that of the person you want to get in touch with;
- Call in at Hawes, Aysgarth Falls or Reeth National Park Centres to have a face to face chat or leave a good old fashioned hand written note.
- For those on Twitter use @dalesranger

Matt Neale

matt.neale@yorkshiredales.org.uk

IAN REYNOLDSON ELECTRICAL

For all your electrical needs

No job too small

Tel. 01748 886725

Mobile: 07814547339

OXQUE MEATS

Grass-reared Local Lamb For Sale

Butchered Locally

£65 a half / £130 whole

Also available: outdoor-reared rare breed pork

Phone Sarah on 07969 612413

Dales Doors - And Do You Have One?

Do you have a house with a date over the door? If so, I would like to hear from you: date, address, and can I come and visit you?

The reason for this request is that I am in the process of writing a guide which will hopefully help people interested in houses in the upper dale (roughly Grinton to Keld) to put a date on undated houses by looking at a series of common external features, and the basis for this is doors, or, more accurately, their surrounds. It relies on finding enough houses with dates that can then be grouped together by style into one of, currently 11, different groups, each with its individual style and individual date range. Without a large enough number of examples this approach won't work, hence this appeal.

Even if you don't have a date-stone, it would also be useful to hear from you if you are able to "prove" when your house was built via deeds etc.

Anyone interested in hearing what the current state of play with the project is, is welcome to attend the next meeting of the **Swaledale Local History Group at 4.15pm on Thursday 9th March**, in the back room of The Buck, Reeth, where the topic is one of the items up for discussion.

Richard Hunt
richardhuntxqk@outlook.com

Cosy Holiday Cottage

Attached to owners' farmhouse
on Hill Farm in Arkengarthdale.
Sleeps 2. No pets. E.M. on request.

Mrs Gladys Atkinson
Tel. 01748 884550

Two Dales Does. . .

A monthly social gathering in the Community lounge in Quaker Close Sheltered Housing. Everyone is welcome to join us for company and a wonderful meal, which is different each month, so come along for an afternoon of food and laughter.

The next three social events are:

- March 14th - St Patrick's Pie and Pudding
- April 18th - Eggstravaganza
- May 16th - The Big Breakfast

All start at 12noon and cost £4.50 each. Free transport is available by calling the community bus on **880021**.

The Land Lord's Prayer

Our Lager

Which art in barrels,
Hallowed be thy drink,
Thy drink will come,
Thy will be drunk,

At home as I am in the tavern.
Give us this day, our foamy head,
And forgive us our spillages,
As we forgive those who spill against
us,

And lead us not into incarceration,
But deliver us from hangovers.

For thine is the beer,
The bitter and the lager,
For ever and ever,
Barmen.

Source Unknown

M. GUY - PLUMBING

For all your plumbing requirements

AGAS & RAYBURNS SERVICED

Tel: 01748 - 825640



Hudson House Centre Reeth

Owned by the Community of
the Two Dales

Community
Gallery
Learning
Library
Orchard
Transport
National Park Centre
North Yorkshire CC
Police
Richmondshire DC
Swaledale Festival

Business Forum
Business Services
Event Tickets
Internet
Local notices & information
Meeting Rooms
Offices
Refreshments
Shop
Tourist Information
Wi-Fi

Open all year
7 days a week – 10am to 3pm

01748 884485
www.hudsonhouse.info



The Farmers Arms, Muker, Upper Swaledale

The heart of spectacular walking country

*

Serving good pub food everyday
12pm - 2:30pm and 6pm - 8:30pm

Well-kept local real ales

*

Dog & muddy boot friendly
Open fire & stone flagged floor
Holiday apartment (sleeps 2)

Tel: 01748 886297

www.farmersarmsmuker.co.uk



J W Porter & Sons

Building + Roofing Contractors

All aspects of building work
skilfully undertaken by
local time-served builders,
with over 30 years' experience
of building in the dales.

Contact Greg, on:
01748 886 434 / 253 or
07817 719881

PATRICIA

DAIRY COTTAGE, LOW ROW
Experienced in both men's and ladies'
sewing alterations.

Most sewing tasks undertaken

'Will come to you'

01748 886905

Job Vacancies at Muker

I'm looking for someone to help me in the kitchen. I'd never worked in a kitchen until 4 years ago so it just shows no experience is needed and I surprisingly enjoy it. Anyway, I'm now missing a key member. Ideally, I'm looking for someone who:

- Is trustworthy, conscientious and hard working, and able to work quickly and efficiently.
- Is a quick learner and logical thinker, to be able to prioritise tasks and multi-task.
- Has a friendly, cheerful personality and can get along with pretty much anyone.
- Is happy to work weekends, doesn't have to be all 52 of them (unless you really want to ;-)
- Is willing to work split shifts - but we may be able to avoid this if necessary.
- Doesn't mind working extra hard in peak season (really busy months are May - September) and taking it easier with less hours out of season, which usually balances out

The average annual wages come to about £15,000 - £17,000 for the right person depending on how many hours you are prepared to work in the busy months and whether we feel we can leave you to it in the really quiet times.

We are only a 15 minute drive up dale from Reeth.

No experience needed and we are nice to work for - we think anyway. You'd be joining a really nice team of friendly local staff who we consider to be like family.

Darren is also looking for someone

to cover a part-time bar role, with full-time potential in Summer. Bar experience preferred but not essential.

If anyone is interested (or even semi-interested but have some doubts or questions), then please get in touch and we can have a chat and maybe organise a 4 week trial period:

Tel. **01748 886297**; or e-mail:

enquiries@farmersarmsmuker.co.uk

Please spread the word. Thanks in advance.

Emily Abbey

The Farmers Arms, Muker

Tips For Apple Tree Pruning

One of the early tasks in the Orchard is winter pruning of fruit trees so here are some tips:

- February, March is more suitable for us in the North, but avoid frosty or snowy weather.
- Prune established trees by taking off the tips of leading shoots.
- Cut out crossing and rubbing branches.
- Cut out dead and diseased wood.
- When pruning, select a fruit bud (large and more swollen than a leaf bud), count three buds above it and prune above an outward-facing bud.

Reeth Orchard's cordon and espalier apple trees are quite elderly and becoming congested so we should be thinning out the old spurs by half to two thirds their original volume in order to produce better-quality fruit.

There will be the usual pruning workshop in the Orchard, the date of which will be on our website (reethorchard.org.uk), in the press and posters around the area. Do join us there.

REETH AND DISTRICT GAZETTE LTD

DONE AND DUSTED HOLIDAY COTTAGE CLEANING

Weekday/weekend turnaround cleaning

Spring and Deep Cleaning

Full Laundry Service

Mattress Steaming

Carpets/Rugs Cleaned

Gardening and Maintenance

**Temporary relief cleaning cover
all year round**

**Long established, reliable with
attention to detail**

Tel Karen on

07748 811680 /

07583 271419

**to discuss your
requirements**



www.doneanddustedcleaners.co.uk



Sarah's of Reeth

07875 926946

Hair colouring

Hair cutting

Reflexology

Aromatherapy

Indian Head Massage

Facials

Raindrop Treatment



COLOURHERBE



Reeth and Mobile

07875 926946

**Holiday
Home
Yorkshire**

Professional & reliable holiday home cleaning

Based in Reeth, we are on hand to ensure your holiday cottage changeovers run smoothly all year round. Our friendly and conscientious team are well trained, reliable and work consistently to a very high standard.

Management regularly carry out spot checks to ensure the highest of standards are maintained and your guests receive a welcoming first impression.

Our services also include:

- Full laundry service from our unit in Reeth
- Adhoc cleaning
- Deep and spring cleans
- Gardening and cottage maintenance
- Marketing and letting

Call in to Unit 3 on the Reeth Dales Centre to discuss your requirements with Hannah or call 01748 900 420.

www.holidayhomeyorkshire.co.uk

Carpet & Upholstery Cleaning Stone Floor Cleaning & Sealing

Safe, Thorough, Eco Friendly

20 years' experience

Local family business

Call Eco Dry Carpet Care,

Leyburn

01969 622620

For FREE Survey

Or visit

www.ecodrycarpetcare.co.uk



Owner, Ian McIntosh

The Punch Bowl Inn And Coffee House - Rolling With The Times

The Punch Bowl Inn at Low Row has been a well loved watering hole for over a century - a place where travellers can stop to rest and gain refreshment.

This year, the management of The Punch Bowl have decided to add a new dimension to the pub's friendly welcome: we've added a coffee house so our customers can call in and enjoy freshly brewed barista coffees and teas along with homemade cakes baked by our in-house chefs. Try Yorkshire Parkin made to a traditional recipe, or luscious slices of Rocky Road, caramel flapjacks, chocolatey brownies, and mouth wateringly crisp cookies, not to mention pannini and sandwiches, meaning the hungry passer-by can enjoy a range of delicious treats throughout the day.

This is all in addition to The Punch Bowl's regular lunch and dinner menu. The Inn also offers 11 beautifully decorated rooms - why not try one of our House Parties. Go to www.cbinnevents.co.uk for more information.

**The Punch Bowl Inn & Coffee House,
Low Row, Richmond,
North Yorkshire, DL11 6PF
Tel: 0333 7000 779**



The Charles Bathurst Inn ARKENGARHTDALE

Outstanding fresh food served in
a warm & friendly atmosphere.
19 en-suite bedrooms with amazing views.
Available for dinners, weddings & meetings.



- Lunch & Sunday Roasts Mon-Sun 12pm-2.30pm •
- Evening Menu 6pm-9pm Monday-Friday & Sunday
5pm-9pm Saturday
- Early Bird Menu 3rd Friday of each month •

FOR FURTHER DETAILS OR TO RESERVE A TABLE
Telephone: 0333 700 0779 Website: www.cbinn.co.uk

The Punch Bowl Inn & Coffee House

Delicious food served all day. Open 11am until 11pm
Coffee House open Mon-Sat 10.30-4pm
March Special Offer: £3.75 for tea/coffee and cake



- Evening Menu 5pm-8.30pm Monday-Saturday •
Sunday 5pm - 8pm
- Traditional Carvery Every Sunday 12pm-2.30pm •
• STEAK NIGHT every Tuesday •
- SPECIALITY NIGHT & QUIZ 3rd Thursday of the month •

FOR FURTHER DETAILS OR TO RESERVE A TABLE
Telephone: 0333 700 0779 Website: www.pbinn.co.uk

**The Upper Dales Mobile
Skip Service: Reeth**

This service will be on the village green on **Saturday 18th March 2017 from 9.00am - 1.00pm.**

Refuse including large bulky items, electrical goods including refrigerators and freezers, and recycling materials including plastic and cardboard all welcome.

Please note that some waste cannot be taken away at the Upper Dales Mobile Skip Service, and this include builder's rubble

WARNING: Please note that no waste should be dumped the night before the skip visits on Reeth Village Green, or on the day before 9.00am. Dumping waste ahead of the arrival of the mobile skip wagons places the mobile skip service, which is of huge benefit to us all in the Upper Dales, under threat of complete withdrawal by NYCC, as it is interpreted as illegal fly-tipping.

**The Two Dales Community Company
Hudson House Ltd**

**The 14th Annual General Meeting
and Partners' Meeting will be held on
Tuesday 25th April 2017, at 2.15pm
at Hudson House, Reeth**

The Annual General Meeting is open to everyone who lives, works, owns residential property in, or is on the electoral roll of the two electoral wards of Reeth with Arkengarthdale and Swaledale within the Richmondshire Rural District of the County of North Yorkshire

Your views and ideas will be welcome at the
AGM

Appointment of new Directors:

Please contact Rita Lawson 01748 884485
before 11th April 2016
if you wish to nominate a new Director

**Reeth & District Gazette
Annual General Meeting**

Thursday 9th March 2017

7.00 pm in
Low Row Institute.
All Welcome

Reeth Memorial Hall AGM

Monday 13th March 2017

7.30pm

All current user representatives are
invited.

Any potential users are welcome and
people interested in volunteering to
help with the running of the hall.

**Reeth Show
Whist & Domino Drive**

**Friday 3rd March in
Reeth Memorial Hall at 7.30pm.**

For further details:
0750 638 0393

Arkengarthdale Sports

Association

AGM

Thursday 16th March 2017

CB Inn at 8:00pm

All welcome

Marske In Swaledale WI January Meeting

Seven members and five visitors (who subsequently became members) were welcomed by acting President Eileen to the meeting in warm and comfortable Fremington Village Hall. The rollcall was won by Audrey. Jean, Hilda and Mary are making good progress and hope to be well enough to attend future meetings.

Eileen explained the NFWI Resolutions procedure, gave an overview of the six on which we were to vote and discussion followed. Hazel will be our delegate at the Spring Council Meeting at Tennants and will be accompanied by Eileen.

Membership subscriptions are due and should be paid at the next meeting.

The varied and interesting 2017 programme was distributed and is being advertised via posters round the region and on the internet. Meetings will be at various venues including Marrick, Marske, Ripon, Foxglove Covert and Reeth Community Orchard plus outings to Wynyard Hall and Kiplin Hall.

The raffle was won by Susan and the competition by Margaret. Business over, we enjoyed soup followed by savoury 'tasters' provided by Jennifer

then indulgent puddings demonstrated by Susan and Valerie.

WI Meetings 2017

We hope you will join us to enjoy our varied programme this year. Visitors are always welcome. Contact Secretary Jennifer Wallis 01748 822930 or Eileen Martin 01748 884257 for further enquiries; or just turn up on the day.

12noon 28th March: Visit to WI HQ at Alma House, Ripon and the Cathedral.

7.00pm 25th April: 60s theme at Marrick - music and 60s wear.

7.00pm 23rd May: Visit to Foxglove Covert with talk on the Arctic.

7.00pm 27th June: Reeth Orchard tour and meeting in Hudson House.

9.30am 25th July: Wynyard Garden outing using community bus.

7.00pm 22nd August: Marrick Institute - talk by Susan Rogers 'How To Create A Second Life'.

7.00 26th September: Marrick Institute crafts demo.

12noon 24th October: Visit to Kiplin Hall and Meeting.

12noon 28 November: The Bungalow, Marske. AGM and Readings. Soup & sweet provided.

12.30pm 12th December: Christmas Lunch

Kings Studio, The Mews, Reeth

Centrally located holiday let
Sleeps 3/4

Two bedrooms, shower room, open plan kitchen/living room, single storey
Light and airy with historic charm

Telephone: 07805 442074

D. J. OLNEY

Painter & Decorator

Interior & Exterior

Call

01748 884065 or

07801 026 006

Cafe Specials

SOUPER TUESDAYS

Homemade soup, bread roll,
slice of cake & hot drink
Only: £6 every Tuesday



SHOW STOPPER
FRIDAYS



Every week a 'Showstopper' of a cake!

Dales
Bike Centre

Fremington

dalesbikecentre.co.uk

tel:01748 884908

14 Bed Bunk 'n' Breakfast

New & Ex Hire Bike Sales
Bike Hire & Repairs



COTIC



FROG
bikes



Orange
MOUNTAIN BIKES



R.A.Lofthouse
Roofing Services
Kirkby Stephen

We specialise in traditional &
modern slating, flagging and tiling.

We offer a reliable and competitive
service in and around the Eden Valley

- Traditional slate specialist
- Re-roof to repair work
- Slating, flagging & tiling
 - Lead work
 - Velux windows
 - Chimney work

For a free quotation or any enquires
please call

Tel: 017683 42689

Mob: 07557738016

Email: r.a.lofthouse@outlook.com

Hall & Birtles
-SOLICITORS-



Conveyancing
Family Matters/Will & Probate
Commercial Property
Leases & Tenancies
Agricultural Property

"Your local legal experts"

Please Contact:

Stuart Hall LLP | Alastair Birtles BA | Debby Parish LLB | John Hall LLB | Michael Birtles LLB
Hall & Birtles Solicitors, The Office, Golden Lion Yard, Leyburn, North Yorkshire, DL8 5AS
Tel: 01969 625226 | Fax: 01969 625255 | Email: leyburn@hallandbirtles.co.uk



REETH AND DISTRICT GAZETTE LTD



A Thank You

We would like to thank Reeth Fire Brigade when they attended the awful fire at our home. They were first on the scene, and once everything and everyone was okay and the fire was out, were the last to leave. They were there for over six hours.

I imagine it must be difficult when you know the family whose home is on fire. Their good humour, professionalism, compassion and consideration was remarkable and will never be forgotten. Thanks must also go to the Fire Brigades from Richmond, Colburn, Ripon, Darlington, Leyburn, Bedale and Northallerton, who were also there and in the end were pumping the water from the nearby beck after making a dam in it. They were all nothing short of amazing trying to save our home.

Thanks also to the many friends and

neighbours, who turned up just behind the fire brigade to see if they could help. They kept the fireman supplied with food and drink through the cold evening - no simple task when there are thirty of them. We were very grateful to be living in such a wonderful community more than ever, when offers of houses came thick and fast, blankets turned up, bags of clothes for the next day and of course the sloe gin was keeping us warm. The kindness carried on with so many people arriving to help to sort and salvage. The mammoth task of trying to wash anything salvageable was taken from us and distributed - eternal gratitude for that one.

You will all be invited to a big party when we have our home back.

So a huge thanks to everyone who helped on the night and are still helping. Someone once told me Hurst was the last place God made in the Dale. To us he saved the best till last.

Gail, Ian and Sam Hall and the pets

Dales Web Solutions

All aspects of Web site design

Visit: www.daleswebsolutions.co.uk

Email: info@daleswebsolutions.co.uk

Tel: 01969 666174

Mobile: 07931 822736

Music Tuition for all ages with
www.colinbaileymusic.co.uk

07711 211169

Drums & Percussion; Vocals;
Piano & Keyboards; Music Theory;
'Get Musical' Workshops.



ANDY MALTON LTD – REETH GENERAL BUILDING CONTRACTOR



Dry lining/ plastering/ ceiling work

Roofing/ pointing/ guttering work

Most building repair work carried out

Free estimates - No job too small

01748 884621 / 07837645104

amalton56@fsmail.net



BEAR COTTAGE INTERIORS

Rustic Country Style Design



*Curtains & Blinds, Fabric, Furniture,
New Interiors and Gifts*

The Cattle Market, Market Place, Hawes, DL8 3RD Tel 01969 666077
www.bearcottageinteriors.co.uk



SALES – LETTINGS – MANAGEMENT

FREE 'NO OBLIGATION' MARKET APPRAISAL AVAILABLE UPON REQUEST

6 Bridge Street
Bedale
DL8 2AD
01677 422282

bedale@
normanfbrown.co.uk

14 Queens Road
Richmond
DL10 4AG
01748 822473/822967

richmond@
normanfbrown.co.uk

25 Market Place
Leyburn
DL8 5AS
01969 622194

leyburn@
normanfbrown.co.uk

www.normanfbrown.co.uk

Diary Dates

March

- 4th Film in Gunnerside Village Hall: *Love and Friendship*. 7.30pm. Doors and bar open at 7.00. £5 (children £3)
- 10th Keld Village Hall Domino & Whist Drive.
- 13th Two Dales Gardening Club, Sports Pavilion, *Question Time* with Helen Weatherall. 2.00pm
- 13th Reeth Memorial Hall AGM. 7.30pm
- 16th Arkengarthdale Sports Association AGM, CB Inn, 8:00pm. All welcome.
- 18th Coffee Morning, Reeth Evangelical Congregational Church. 10.00am - noon
- 23rd TLC@Gunnerside Village Hall, pie and pea supper.
- 24th Rag Mama Rag, Reeth Memorial Hall. 8.00pm
- 31st Movie Magic, Reeth Memorial Hall. 8.00pm

April

- 1st Film in Gunnerside Village Hall: *In the Heat of the Night*. 7.30pm. Doors and bar open at 7.00. £5 (children £3)
- 1st-12th The Art of John Hunter - Planes, Trains and Country Lanes. One-man art exhibition at The Station, Richmond
- 10th Two Dales Gardening Club, Sports Pavilion, *On the Home Front: Wartime Gardening* with Marilyn Elms. 2.00pm
- 21st Tania Opland & Mike Freeman, Reeth Memorial Hall. 8.00pm

- 27th TLC@Gunnerside Village Hall, talk by Trevor Hawkes from Wensleydale Garden Centre on "Garden planters"
- 29th Film in Gunnerside Village Hall: *I, Daniel Blake*. 7.30pm. Doors and bar open at 7.00. £5 (children £3).

May

- 11th Christian Aid Service, Low Row URC at 7.30 pm
- 19th Cake Stall on Reeth Green for Christian Aid Week
- 20th Film in Gunnerside Village Hall: *Swallows and Amazons*. 7.30pm. Doors and bar open at 7.00. £5 (children £3).
- 25th Lady Maisery; Aldridge & Goldsmith, Reeth Memorial Hall. 8.00pm

Market Place

Advertise here for free.

20 words or less.

Non-business adverts only.

For Sale

Part worn winter tyres 2xHanKOOK I*cept evo 205/60 R16 96H. 5mm (plus) tread remaining. £25 each. (No silly offers) **01748 884671**

King Size Metal Bed Frame. Sprung wooden slats. Ivory & Brass. VGC. £50 **01748 884671**

Wanted

Adult traditional rocking chair. Reasonably priced. **0749 892 3915** or e-mail angelface82@outlook.com

3D Cross-Stitch



The Nutmeg Gallery

Dozens of models on display together with kits, accessories and the full range of DMC stranded cotton. Normally open Mon-Fri, and Saturday afternoon.

Reeth Dales Centre, Off Silver Street,
Reeth, DL11 6SP, 01748 884926



www.3dcrossstitch.co.uk



All aspects of tree work carried out by fully insured and NPTC qualified tree surgeons.

Tree removal, pruning, planting, hedging and stump grinding.

Contact Tom Hollingworth

07929322227

www.arborestrees.co.uk



YOUR LOCAL TRADITIONAL

CHIMNEY SWEEP

NACS & HETAS qualified & registered

We set ourselves very high standards and take every care in your home

We offer a comprehensive service

All types of chimneys swept to relevant BS Std.

Bird guards & cowls, etc. supplied & fitted

Advice freely given, problems solved

Carbon monoxide detectors

Chimney pots replaced

01765 688078

www.sweepinthedales.co.uk

Stove Refurbishment

Stove servicing and repair

Solid fuel stove installations

Stainless steel flexible linings

Stainless steel rigid flue systems

Only high quality components are used

HETAS qualified & registered installer

STOVE INSTALLATION



Aches & pains?

Remedial massage can help...

- neck & shoulders
- back • hips • knees
- feet and ankles
- arms & hands

Jennifer Thursfield

Remedial Massage NAMMT CNHC

Tel: 07889 546608 • Based in Richmond

jtremedialmassage@gmail.com

www.jtremedialmassage.co.uk

Kearton Country Hotel, Thwaite



Tea Rooms Restaurant & Bar

Now Taking Bookings for
Mothers Day 26th March
Traditional Sunday Lunch
12-2.30pm

**Tea rooms & licenced
restaurant open daily**
11am – 5pm Mon to Fri
10am – 5pm Sat - Sun
Lunches served 12 - 4pm

Three course home cooked evening meals

Join our guests & experience our
warm friendly hospitality.
Evening meal reservation only

Real ale & fine wines

Tel 01748 886277

Email:

info@keartoncountryhotel.co.uk

www.keartoncountryhotel.co.uk

nh flooring

Covering Swaledale, Arkengarthdale,
Wensleydale and beyond!



www.nhflooring.co.uk

Image with thanks to **Cornar**

Carpet - Wood - Laminate - Vinyl

Tel: 01748 822834

Mob: 07789 996526

E-Mail: nick@nhflooring.co.uk

We offer a home sampling and measuring service
arranged at a time convenient to you. Please call us to
make an appointment.

Alternatively, our showroom is open on Thursdays and
Fridays from 9am - 5pm and Saturdays 9am - 1pm.

Find us at: Unit 6 Borough Court
Borough Road
Gallowfields Trading Estate
Richmond
North Yorkshire
DL10 4SX