

REETH & DISTRICT GAZETTE

ISSUE NO. 242

JULY 2016



*Your local news magazine
for the Two Dales.*

PRICELESS

First Thoughts . . .

Here's a topic of conversation for you:
Community Spirit: What is it? Have we lost it?

There are those who would argue that we have indeed lost it, citing in evidence petty acts of vandalism around the village; the disregard by some of the requirement to clean up after their dog; or the thoughtless manner in which some people park their car. Further, they may argue that generally, people are more self-centred and are only interested in something if it benefits themselves and have no regard for the common good.

I recently heard DIY SOS presenter Nick Knowles on the radio talking about community spirit and he felt that it seems to be disappearing. However, he did think that it is still there beneath the surface and just needs something to bring it out - as evidenced by the number of people who are willing to lend a hand to the various projects the programme undertakes.

But why should it be only in adversity that community spirit shines through? Why can't it be just part of everyday life?

Perhaps the informal picnic on the green to celebrate the Queen's 90th birthday (see page 23) is an indication that the community spirit is, as Nick Knowles suggests, there but just below the surface. And if so, what can we do to enable it to flourish?

As JFK said, "Ask not what Reeth can do for you, ask what you can do for Reeth."

Discuss.

MAC

nh flooring

Covering Swaledale, Arkengarthdale,
Wensleydale and beyond!



Carpet - Wood - Laminate - Vinyl

Tel: 01748 822834

Mob: 07789 996526

E-Mail: nick@nhflooring.co.uk

We offer a home sampling and measuring service arranged at a time convenient to you. Please call us to make an appointment.

Alternatively, our showroom is open on Thursdays and Fridays from 9am - 5pm and Saturdays 9am - 1pm.

Find us at: Unit 6 Borough Court
Borough Road
Gallowfields Trading Estate
Richmond
North Yorkshire
DL10 4SX

REETH AND DISTRICT GAZETTE LTD

GAZETTE MANAGEMENT TEAM

Chairman: James Alderson

Greenways, Grinton, Richmond

DL11 6HJ

Tel: 01748 884312

E-mail: chairman@reethgazette.co.uk

Secretary: Sue Alderson

Holme View, Low Row, Richmond,

DL11 6PE

Tel: 01748 886292

E-mail: secretary@reethgazette.co.uk

Editor: Martin Cluderay

Reeth Post Office, Reeth, Richmond

DL11 6SE

Tel: 01748 884201

E-mail: editor@reethgazette.co.uk

Treasurer: Andrew Bedford

Glory Be, Blades, Richmond, DL11 6PS

Tel: 01748 886974

E-mail: treasurer@reethgazette.co.uk

Subscriptions: Elsie Whitehead

Tel: 01748 884132

E-mail:

subscription@reethgazette.co.uk

Distribution: Trevor Brown

The Cottage, Healaugh, Richmond,

DL11 6UA

Tel: 01748 884111

Team Member: David Trusson

Email: rdg@reethgazette.co.uk

Published by

The Reeth & District Gazette Ltd.

Company Number: 06541854

c/o The Company Secretary

Andrew Bedford, Glory Be, Blades

Richmond, North Yorkshire DL11 6PS

Tel./Fax: 01748 886974

E-mail: treasurer@reethgazette.co.uk

No material may be reproduced in whole or in part without permission. Whilst every care is taken for accuracy, the publishers cannot be held legally responsible for any errors or opinions in articles, listings or advertisements.

ADVERTISING

For information on advertising and prices, please contact the treasurer.

For advertising copy, please contact the editor.

The editor reserves the right not to publish any advert or article considered to be inaccurate or misleading

All articles or items for inclusion should be sent to the editor (E-mail: editor@reethgazette.co.uk) or left at Reeth Post Office.

Posting The Gazette

If you are posting a copy of this Gazette to a friend or relative, please note that it is **Large Letter** size and will cost **£1.20 second class**, or **£1.27 first class**. (Two standard first class stamps = £1.28)

Gazette Deadlines

The deadlines for the next two months are:

August issue: July 10th

September issue: August 10th

PLEASE NOTE: We cannot guarantee that items submitted close to the deadline date will be included.

"Believe nothing, no matter where you read it or who has said it, not even if I have said it, unless it agrees with your own reason and your own common sense."

The Buddha

COVER PICTURE

The Queen's 90th taken by

John Horner

www.digitalswaledale.com

Letters To The Editor

Anti-Social Behaviour

Can I make an appeal to the irresponsible dog owners who abandon filled poo bags on roadsides, paths, in stone walls and farmers' fields to please stop this very anti social behaviour; it is the worst kind of littering. Who do you think will remove and dispose of the bags: the poo fairy perhaps?

It is the responsibility of all dog owners to clean up and remove dog poo. Fines do and will apply where guilty parties are caught in the act.

Name & address supplied



**"If your dog can't do it,
you will have to."**

Dandelions

Have you noticed that we are being invaded?

Two years ago it was possible to walk along the meadow path from Reeth to Grinton without seeing a single dandelion. Last year there was just a handful. This year they are growing all along the path. And next year . . . ?

Dandelions are similarly invading other parts of the dale. The flowers are strikingly handsome and it's great fun to blow the 'clocks' but dandelions are greedy. When they take over an area all the other plants are gradually smothered and squeezed out.

What can we do to preserve the biodiversity of the dale? The only way to stop the plants from seeding is to pick the flowers. If we all made a point of picking every flower we see (or a minimum of 20 a day during the first flush) and encourage children to do the same, instead of scattering the seeds, we could at least slow down the insidious advance.

Keep an old plastic bag in your coat pocket to protect your hands from the dandelion 'milk' and let's all pull together to wage war on the dandelions.

Elizabeth Gregson

S.J.R Plumbing Services

For all of your domestic
Plumbing requirements.

C & G/Advanced C & G Qualified
Reliable With Very Competitive Rates

Based in Reeth

01748-884036

Or 07977-297563

Kings Studio, The Mews, Reeth

Centrally located holiday let

Sleeps 3/4

Two bedrooms, shower room, open
plan kitchen/living room, single storey

Light and airy with historic charm

Telephone: 07805 442074

**Twenty Years Ago
Extracts from the
July 1996 Gazette**

At the recent Annual General Meeting of the Thursday Club, it was decided to close down the Club due to decreasing membership. The final meeting was a Dinner at the Bridge Inn, Grinton when all members were present.

The new housing on Place Hill (Silver Street), Reeth is now complete and the residents have moved in. However the move into the new homes has not exactly been straightforward. Excusing certain design faults, one problem was when a removal vehicle reversed into one of the walls, demolishing it before the wrought iron fencing could be completed. The other was a swarm of bees became very attracted to a new house before the official tenants could move in. The bees had made themselves very much at home in the cavity wall and were impossible to remove and had to be destroyed.

Spyda, representing the 'Drip & Bucket' (better known as the Black Bull) in the Licensed Victuallers sponsored bike ride from Leyburn to Hawes on an extremely wet day, raised £210 for local charities.

It was pointed out that the name of the public building in Grinton was no longer the Institute, despite the name above the door and the plaque inside and should now properly be called the Village Hall.

I shouldn't imagine when Kate Trusson started her quilting group in 1984 that she envisaged it would eventually expand into a very popular Craft group enjoyed by a number of enthusiasts who now meet each Tuesday afternoon in the Methodist Church Schoolroom. Kate, a well-known teacher of the art of embroidery, in all its forms, was later joined by Joan Bell's well established rug-hooking group. The members pursue a wide range of traditional crafts, like quilting, rug-hooking, lacemaking, canvas work and embroidery.

Thefts are still plaguing Arkengarthdale. Cocker John's pickup was stolen early in the evening, from outside his house. The load of logs were found the following day on the Sleightholme road. The pickup was discovered a few days later burnt out with the engine missing dumped in a quarry hole over near Bishop Auckland.

Since being connected to Yorkshire Net following a recent talk to the Local Business Association, Richard Good of Arkengarthdale has reported some bookings from the Internet. So it does work and is possibly the way forward for the future.

**HOLIDAY COTTAGES
REETH**

2 cosy holiday cottages situated just off the village green in Reeth.

Glenkobla sleeps 1-2 Cragside sleeps 4

Secure bike storage

Tel. 01748 884237

E-mail: walkerg17@sky.com

MCGARRY & CO SOLICITORS

Friendly local legal advice on :

- Wills
- Probate and Administration of Estates
- Powers of Attorney
- Nursing and Residential Home Costs
- Agricultural Matters
- Land Transactions

Home or farm visits

21 Galgate, Barnard Castle,
County Durham DL12 8EQ

Tel: 01833 600160

Email : office@mbmcgarry.co.uk

Regulated by the Solicitors Regulation
Authority



SUMMER AT WGC!

Perennials, shrubs and trees
Fantastic range of herbs
Ready-planted pots and baskets

DAVID AUSTIN ROSES

The colours and scents of an
English Summer

OUTDOOR LIVING

Dining Sets & Companion Seats
Alexander Rose Garden Benches
Barbecues & Accessories

GET THE KIDS GARDENING

Children's tools, gardening sets
and growing kits

Plus . . .

Wide selection of pots and planters
compost, chemicals and feeds,
Red Barn premium bird food, tools,
accessories . . . and much more

GIFT VOUCHERS

Redeemable nationwide

Tel: 01969 625397

Station Yard, Harmby Road, Leyburn DL8 5ET

wensleydalegardencentre2015@gmail.com

www.wensleydalegardencentre.co.uk

Open 9am-5pm Mon-Sat & 10am-4pm Sun

(Note: Closed Tues 5th July)

HOUSE KEEPERS

DONT DESPAIR, CALL THE CLEANERS THAT CARE...



Operating a 5 Star cleaning service,
specialising in holiday cottages.

Contact Details: Nichola: 07710 560 400
Linda: 07917298244 Email: ocslimited@hotmail.co.uk



**The Farmers Arms,
Muker, Upper Swaledale**

The heart of spectacular walking country

*

Serving good pub food everyday
12pm - 2:30pm and 6pm - 8:30pm

Well-kept local real ales

*

Dog & muddy boot friendly
Open fire & stone flagged floor
Holiday apartment (sleeps 2)

Tel: 01748 886297

www.farmersarmsmuker.co.uk

R. & W. GIBSON & SON Ltd.

**CERAMIC WALL
& FLOOR TILERS**

SHOWROOM NOW OPEN

Monday - Friday: 9.00 am - 4.30pm

Saturday: 10 am - 1 pm

(or by appointment)

At Borough Road,

Gallowfields Trading Estate

DL10 4SX

Tel. 01748 - 822682 (Home)

Tel. 01748 - 821909 (Showroom)

"We cover the Dales"

Born in July?

Who do you share your birthday with?

- 1 Carl Lewis, slow coach
- 2 Roy Bittan, E Street Professor
- 3 Mississippi John Hurt, bluesman
- 4 The United States of America
- 5 Dolly the sheep
- 6 Tenzin Gyatso, the Dalai Lama
- 7 Bill Oddie, twitchy bloke
- 8 Ferdinand von Zeppelin, invented Led
- 9 Richard Wilson, if you can believe it; he can't
- 10 Beaky, the one in the middle
- 11 Giorgio Armani, a suit
- 12 Josiah Wedgwood, a potter
- 13 Harrison Ford, goes it alone
- 14 William Hanna, invented Tom and Jerry
- 15 Clive Cussler, lives near Nils Lofgren
- 16 Ginger Rogers, could dance a bit
- 17 David Hasselhoff, aka The Hass
- 18 Dion DiMucci, a Wanderer
- 19 Ilie Năstase, brilliant tennis player
- 20 Alexander the Great, undefeated
- 21 Ernest Hemingway, bell ringer
- 22 Spilliam Archibald Wooner
- 23 Monica Lewinsky, a gate
- 24 Evan James Springsteen, not as good as his dad
- 25 Nelson Piquet Jr, not as good as his dad either
- 26 Mick Jagger, a knight of the realm
- 27 Ernest Gary Gyax, invented Dungeons and Dragons
- 28 No-one of note
- 29 Patti Scialfa, Evan's mum
- 30 Henry Ford, made model cars out of tea
- 31 Norman Cook, moved to Hull to join The Housemartins

Reeth Gazette Community Chest

This month's recipient is **Marrick Priory Outdoor Education Centre** with the donation going to their bursary fund. Here's what they have to say:

Marrick Priory Outdoor Education and Residential Centre is a registered charity based near Reeth. Our mission is to give as many young people as possible the opportunity to embrace a wide range of outdoor activities alongside their peers whilst sharing these experiences together in a remarkable and unique setting; a 12th century Benedictine nunnery.

The activities we offer young people aged 8 to 18 years from the Dales and beyond include high ropes, low ropes, archery, zip wire over the River Swale, canoeing, kayaking, abseiling, caving and shelter building. These activities help overcome their fears, build trust and

develop their self-confidence and self-pride.

Marrick Priory is an inclusive Centre so we have a bursary fund which helps support young people to attend the Priory from families experiencing financial hardship caused through loss of employment, disability or a radical change in family circumstances. This fund also enables the Priory to offer respite for young carers in Richmondshire so they can have a day or weekend of outdoor adventurous activity with others in a similar situation.

~~~~~

If you'd like your group to benefit, email the [editor@reethgazette.co.uk](mailto:editor@reethgazette.co.uk) with a little bit about what it does. The management board of the Gazette will select one group each month to receive a donation. If yours is selected, you'll be asked to write an article of 300-400 words to appear in the Gazette, about your organisation.

### OVERTON HOUSE CAFÉ & SHOP, REETH

Light meals and home baking.

Eat in or take out. Orders taken.

Closed Mondays (except Bank Holidays)

and Thursdays

01748 884045

[www.overtonhousecafe.com](http://www.overtonhousecafe.com)

### M. GUY - PLUMBING

For all your plumbing requirements

AGAS & RAYBURNS SERVICED

Tel: 01748 - 825640

### Marwood Mellor Yarn Company

Artisan Designer Maker Rosalie Marwood Mellor

is now at Unit 8 Silver Street, Dales Centre,

Reeth, DL11 6TG.

Fun workshops in spinning, weaving & millinery to City & Guilds level 2. Weekly "SEWING BEE"

Luxury hand spun wool & hand woven

accessories & gifts from the

fleece of our local sheep.

[www.marwoodmellor.co.uk](http://www.marwoodmellor.co.uk)

### Stewart Teale

## Landscape Gardener

All aspects of hard landscaping

General garden maintenance

Over 20 years experience

For a free estimate Tel:

01748 884705 – 07782849379





**Ballet for boys and girls  
from the age of 3 years.**

**Modern Dance/Jazz  
for children and teenagers.**

**Tap for children and adults.**

**For more information please  
contact:**

**Janet Seymour LRAD**

**Tel: 01748 884 677**

**Mobile: 07971 282 566**

**www.swaledaledance.co.uk**


## ROSE PETAL Beauty

Full range of beauty and holistic  
treatments at Town End Hall, Reeth.

Contact me, Rose Atkinson, on:  
T: 01748 880207 M: 07813 841778

E: [rose@rosepetalbeauty.co.uk](mailto:rose@rosepetalbeauty.co.uk)

W: [www.rosepetalbeauty.co.uk](http://www.rosepetalbeauty.co.uk)

: [rosepetalbeauty](https://www.facebook.com/rosepetalbeauty)

*facials - waxing - tanning - makeup - massage  
- manicure - pedicure - gel nails - weddings*

  
SOAK-OFF  
GEL POLISH

  
NYR Organic

SPARITUAL®

## Geoff Braithwaite

### Property Maintenance

Painting & Decorating  
Kitchen & Bathroom Fitting

Wall & Floor Tiling

Pointing & Patios

General Repairs

Fast, Friendly,

Reliable Service

Quality work guaranteed

**Tel : 01748 886783**

## P.A. DOOLEY

Plumbing &  
Heating  
Engineers 

- Installation of Energy Efficient Heating Systems
- Bathrooms Fitted
- General Plumbing
- Gas Fires/Stoves Installed

Tel: **01969 667958**

Mobile: **07890 021829**

CORGI  
Registered

CALOR  
LPG GAS  
Installers

OFTEC  
OIL Installers

## REETH AND DISTRICT GAZETTE LTD

### Calling Young People of Reeth

A local arts charity are offering teenagers in Reeth a unique one-off creative workshop, free of charge.

If you are aged 11-18 and are looking for a chance to get involved in a fun evening, meet new people, make new friends and try your hand at a creative activity, then make sure you keep on reading.

Rural Arts, an arts charity based in Thirsk, are currently running a brand new scheme called *A Rural Roadtrip*. This involves Rural Arts staff members travelling all across North Yorkshire to deliver free creative workshops to as many young people as possible.

This workshop lasts for 2 hours and combines arts, drama and design and is open to any young people interested in getting involved. Running on the **7th July at Reeth Memorial Hall**, it will be led by two staff members from Rural Arts, both of whom are trained in the arts and have a wealth of experience, and staff members from North Yorkshire Youth.

"We are really excited that our Rural Roadtrip is stopping in Reeth"

said Joe Hennessy, who is managing this project. "We always have a great time delivering this workshop and we are sure that Reeth will be no exception."

Rural Arts has been running for 25 years, and it's mission is to provide all regions of North Yorkshire with opportunity to get involved with the creative arts. It runs its own venue, The Courthouse, which has an award winning café, gallery, meeting rooms and a studio where many creative workshops takes place, and various schemes in the community including ON Tour, the rural touring scheme for North Yorkshire and East Cleveland.

If you are interested in getting involved in this workshop, or want any more information please e-mail [joe@ruralarts.org](mailto:joe@ruralarts.org) or call **01845 526536**.

#### CHARMING OLD COTTAGE IN THE CENTRE OF REETH

(sleeps 6+)

Open fire & background heating.

Fully fitted kitchen, dishwasher, fridge/freezer.

2 bathrooms, 2 double bedrooms, 1 twin bedroom & attic play area/fourth bedroom with 3 single beds.

Private, secure, rear courtyard area.

Dogs welcome.

Contact Denyse on **01740 631470** or

e-mail [denyse00@btinternet.com](mailto:denyse00@btinternet.com)

[www.holidaycottageswaledale.com](http://www.holidaycottageswaledale.com)

### LEYBURN PETS LTD

**Pet Shop &**

**Wild Bird Feeding Centre**

Everything you need for the animal  
in your life!

**73 High Street, Leyburn**  
**01969 622953**

### YORKSHIRE FOOT CLINICS

Podiatry/Chiropody

Tony Wilkinson SRCh, MChS, BSc Pod(Hons)

**Nail cutting, callous, corns &  
ingrowing nails**

**All treated in the comfort of your home**

**Tel. Richmond 850020**

**Or Hawes 667449**

*Always insist on state registered*



ART  
MUSIC  
DRAMA

A RURAL ROADTRIP  
TO REETH  
MEMORIAL HALL

THURSDAY 7TH JULY  
6:30 – 8:30PM

Are you aged between 11-18? Are you looking for something exciting to do in the evening? Do you want to try something different and learn new skills?

On Thursday the 7<sup>th</sup> July, Rural Arts and North Yorkshire Youth are running a one off creative workshop for all young people in Reeth and the surrounding areas. Ran by industry professionals, the session includes art, drama and discussion and is open to anyone and everyone who is interested. Why not come along, have some fun and make new friends!

To find out more, or to book a place on the session, e-mail Joe at [joe@ruralarts.org](mailto:joe@ruralarts.org) or call 01845 526536.

01845 526536 | [www.ruralarts.org](http://www.ruralarts.org)  
Rural Arts - The Courthouse - Westgate - Thirsk - YO7 1QS



## Own your own piece of Swaledale...

SWALEVIEW  
PARK

### From only £28,000

- The ONLY holiday homes for sale in Swaledale
- Beautiful and unrivalled riverside location at the head of Swaledale yet minutes from Richmond
- Showhomes and Lodges available for viewing on the park
- All inclusive price including all furnishings
- Superb specification
- Open since 1946, Swaledale's longest established, family owned park

**Affordable luxury in Yorkshire's National Park**



Telephone 01748 823106

Showhome open daily from 9.30 to 5pm

[www.swaleviewpark.co.uk](http://www.swaleviewpark.co.uk)

[info@swaleviewpark.co.uk](mailto:info@swaleviewpark.co.uk)

## REETH AND DISTRICT GAZETTE LTD



**WELCOME TO Swaledale**

**S A B F**

**The Swaledale & Arkengarthdale Business Forum**

- Set up to create a more successful business environment
- Marketing our two Dales to visitors and other businesses
- Join us to help every local business flourish
- Help protect our community, jobs and quality of life

Contact Michael Meacock, 886763, Judith Dower, 886366.

Visit our website [www.swaledale.net](http://www.swaledale.net)

Packed with information for visitors and locals alike, including a comprehensive services directory



**Natural Carpet & Upholstery Cleaning**  
**Local Family Business**  
**20 years' Experience**

*We guarantee our Eco Safe Cleaning is Thorough - Fast Drying - Stays Clean Longer*

**Call 01969 622620**

**For Free Survey & Advice**  
[www.ecodrycarpetcare.co.uk](http://www.ecodrycarpetcare.co.uk)



Eco Dry Carpet Care is an endorsed Which? Trusted trader.  
Owner Ian McIntosh



**The ethical way to invest locally**



**Darlington Credit Union**



**Money Works**  
Make it work for you

**Where:** Hudson House, Reeth - 10am-12pm  
**When:** Every 1<sup>st</sup> and 3<sup>rd</sup> Friday of the month  
**Contact:** [emma@darlingtoncreditunion.co.uk](mailto:emma@darlingtoncreditunion.co.uk) or 01325 529829 for more details

**REETH GARAGE LTD.**

**ARKENGARThDALE ROAD,  
REETH, RICHMOND,  
NORTH YORKSHIRE.  
DL11 6QT**

**VISIT OUR AMAZING  
FORECOURT SHOP**

**CLASSIC COUNTRY  
CHECKED SHIRTS**

Show this advert to get 10% off

**HOGS OF FIFE  
FABRIC HIKING BOOTS**

Only £39.95

**GARDENERS**

We stock compost, multi-  
purpose plant food, Tomorite  
and weed killers

**HOME DECORATORS**

we have paints, emulsions,  
brushes, fillers, silicones and  
wallpaper adhesives

**HOUSEHOLD CLEANERS**

Detergents, cleaning liquids,  
bleaches, cloths and sponges

**TEL. 01748 - 884243**

**EST. OVER 60 YEARS**



**KINGS HEAD**  
PUBLIC HOUSE

***A proper pub offering  
a warm welcome,  
great food and  
Yorkshire ales to  
friends and visitors  
from near and afar***

Open for food every evening  
from 5.30pm onwards

**Sunday Evenings**

Quiz - from 8.00pm

&

**Fridays**

Happy Hour 6pm - 7pm

Gunnerside, Swaledale

DL11 6LD

**01748 886261**

[www.kingsheadgunnerside.com](http://www.kingsheadgunnerside.com)

## Summer News From Arkengarthdale C of E Primary School

As the summer term draws to a close there's still plenty to look forward to, as well as reflecting on the wonderful activities and achievements in school since Easter. Starting with dates for your diaries:

**Friday 8th July at 1.30 pm** - please do join us for our school's sports day, always a fun-packed and exciting afternoon.

**Friday 22nd July at 11.00am** - our Leavers' Assembly will take place in Arkengarthdale St. Mary's Church when we say a sad but very fond farewell to Arthur, Ellen, Isabel, Ralph and Sid.

Looking back we've had a very busy but enriching couple of months. Our Year 4 pupils, Eoghan, Hannah, Harry and Kirsty enjoyed an extremely positive experience during their residential trip to Marrick Priory in May. It was a great opportunity for the

### Carvoeiro, Algarve, Portugal

Spacious well-equipped ground floor apartment, sleeps 5.

Quietly situated on a small low-rise development with five pools.

Within strolling distance of this vibrant, friendly village with its lovely beach and lots of excellent restaurants.

Golf, tennis, walking or just lazing by the pool.

Wood burning stove for cosy winter lets.

**Please contact Lee on  
01748 884473 for details.**

Langthwaite - Arkengarthdale

### **RED LION INN**

Free House

Real Ales – Bar Snacks

Books & Maps

**Tel. 01748 884218**

children to learn outdoors, and joining with children from Richmond Methodist School they were also able to forge new friendships. They developed their teamwork skills, grew in confidence and independence and tackled challenges and activities with real enthusiasm and energy, including the climbing wall and zip wire. The children, as always, were impeccably behaved and a credit to the school.

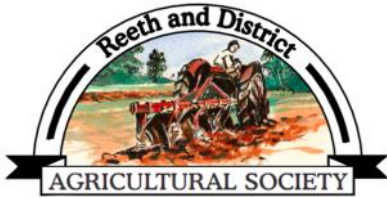
Huge congratulations to our year 3 and 4 tennis team, Emily, Eoghan, Harry, George (Harker), Hannah, Isaac, Kirsty and Lily, who won the recent Richmondshire Area Stage One Competition, hosted by Richmond School. This was a great achievement as it was the first time the children had played in a tournament and given they were competing against much larger schools with teams made up of solely year 4 pupils.

Our latest Forest School tepee event was another success with foundation-stage pupils visiting from Richmond Methodist School together with other children from our community. The activities were wide ranging and included making miniature dens for their teddies, teddy hide and seek and story time in the tepee.

**Helen Ring, Headteacher**

**Don't forget: The Gazette is online.  
[www.2dales.org.uk](http://www.2dales.org.uk)**





**Monday 29<sup>th</sup>  
August 2016**

This year's main ring  
attraction is

**JOSEPH'S AMAZING CAMELS**

For a schedule or any enquires  
please contact 07506380393  
or email – reethshow1@gmail.com

REETH EVANGELICAL  
CONGREGATIONAL CHURCH

**HOLIDAY  
BIBLE CLUB**

**'Guardians of Ancora'**

Bible Stories

Quizzes ~ Picnic ~ Crafts  
Games ~ Music

Family Fun Evening

25<sup>th</sup> - 29<sup>th</sup> July, 10am-noon

FOR ALL CHILDREN OF PRIMARY  
SCHOOL AGE (4 years & up)

Contact Mary Levell (01748) 884091  
or Elizabeth Gregson (01748)884401

[www.reethecc.co.uk](http://www.reethecc.co.uk)

Kim and Richard  
Atkinson  
**WELCOME YOU  
TO  
THE BLACK BULL**



The oldest inn in Reeth

Quality accommodation

Excellent food

(Very popular Sunday Carvery)

A fine selection of  
Real Ales and Wines

And a warm welcome  
**Tel. 01748 884213**

## Message From The Swaledale Museum In Reeth

Thank you everyone who came to our first talk of the season. The Museum was packed. Roger Preston and David Joy introduced their work with style, resulting in lots of sales of both photographs and books. Do come and see Roger's dramatic pictures showing the sublime grandeur of our lead mining heritage; and there are copies of David Joy's book Men of Lead available in our shop. Thank you Jenni for a splendid day of spinning, even the curator managed to spin a small ball of wool under her patient and inspiring instruction.

We were privileged to receive many new acquisitions for the Collection last

month, including an exceptionally fine white whole-cloth quilt made by Martha Jane Pedley (née Hird), the mother of Elsie (who took over the running of Grinton Post Office from her mother), Robert, William, Edward, Robert and Francis. Commander Jackson kindly donated a cache of local ephemera relating to Muker, including news cuttings and silk memorial book marks.

We have finalised our annual Tea Party now set for **Saturday 13th August, 3.00 pm to 6.00 pm**. We are most grateful to the Community Orchard Group in Reeth for once again hosting this event, a wonderful opportunity to enjoy this hidden treasure reminding us how lucky we are to have such a facility. This year's event has an added attraction, the Yoredale Strummers Ukulele Band - who have very kindly offered to

## MICHAEL GUY ELECTRICAL

### FULLY QUALIFIED ELECTRICIAN

Over 14 years experience working in the dales in all areas of electrical work.

From an extra socket to a complete rewire; underfloor heating to portable appliance testing, I offer a reliable and competitive service.

**Contact Michael on:**

**T: 01748 886097**

**M: 07980130017**

**E-Mail: michaelguy25@hotmail.co.uk**

**ELECSA APPROVED CONTRACTOR**

## THE OLD TEMPERANCE BOOKSHOP

Reeth, Richmond, DL11 6TE

Tel. 01748 884185

**Christian Books, Cards & Crafts**

**Fairtrade Food**

**Beside the village green in Reeth**



**Opening times :**

**1.30pm - 4.00pm**

**Mon, Thurs, Sat**

**10.30am - 4.00pm**

**Fri (Market Day)**

**Fairtrade Za'atar  
Makes you smarter**

## REETH AND DISTRICT GAZETTE LTD

perform. This will ensure that the afternoon goes with a swing. Get your posh frock and panama hat out now.

Here is a new note for your diary:

On 27th September we are working with the Green Howards Museum in Richmond to explore their collection of silver. Claret jugs based on Viennese porcelain, sculpture by an Italian model maker, and examples of the latest Victorian technology - intrigued? Come and join us at the Green Howards - and get to grips with this intriguing collection. For more information contact Helen at the Museum.

We have had lots of bookings for our talks but there are still plenty of places left, but if you want to guarantee/reserve a seat do give us a call. They are all held in the Museum and start at 7.30 pm. For the full programme see our website.

**Wednesday 6th July:** Philip Batman 'Sink or Swim: Kinship Families and the Collapse of Lead Mining in Victorian Swaledale.' Phil, a retired pathologist is, at heart, a family historian. He has researched and written about his own and other families in and around York, his home town. What interests him is what pushes and pulls families in different directions over time. The talk tonight is about some core

### Cosy Holiday Cottage For Two

Peaceful location with panoramic views  
of Arkengarthdale.

Ideal for walking or just relaxing.

**Tel: Shirley Gale 01748 884779**

**E-mail: shirley@swaledale.org**

Swaledale families who chose to emigrate in the nineteenth century, and others who chose to remain.

**Wednesday 20 July:** Helen Bainbridge & Marion Moverley, 'Read All About It: Swaledale and Arkengarthdale in the Newspapers'. Marion and Helen will romp through the local newspapers of the past, picking out themes such as entertainment, sport, the weather, births, marriages and deaths, court proceedings, church events, and news from abroad, as well as reporting on the sensational - such as the Vicar of Melbecks and Humpty of Grinton. Intrigued? Come along and join us.

Friends of the Museum annual membership (single £10, joint £15, family £20) gives unlimited free entry to the Museum, discount on talks, and our twice-yearly Newsletter.

For more information contact:

**[museum.swaledale@btinternet.com](mailto:museum.swaledale@btinternet.com)**  
or telephone **07969 823232** or **01748 884118**. **Helen Bainbridge**

### REETH POST OFFICE . . . more than just a Post Office

**Reeth, Richmond, N. Yorks DL11 6SE Tel 01748 884201**

#### Post Office

No fee Cash Withdrawals  
Banking Services  
Travel Money & Insurance  
Phone Top Ups  
Health Lottery

#### Gift Shop

Gifts & Cards & Stationery  
Toys & Games  
Local maps  
Walking & guide books  
Photocopying

#### Cornershop

Beers, Wines & Spirits  
Sandwiches & Pies  
Milk, Dairy & Meat  
Fruit & Vegetables  
Cakes & Biscuits & Crisps

**SERVING OUR COMMUNITY [www.reethpostoffice.co.uk](http://www.reethpostoffice.co.uk)**

## Let's Get Lyrical

So, how did you do with the Prince lyrics? The answers are:

1. This is what it sounds like **When Doves Cry**
2. So tonight I'm gonna party like it's **1999**
3. She wore a **Raspberry Beret**
4. I just want your extra time and your **Kiss**
5. I only wanted to see you underneath the **Purple Rain**

As for the tie breaker question, it is estimated Prince wrote somewhere between 500 to well over 1,000 songs, but not all of these were released. As far as releases go, he has released ninety seven singles, thirty four promotional singles, twenty one internet singles, and eight internet downloads, making a total of 160.

And the winner is: No-one. Obviously no Prince fans out there.

So this month, as it's a roll-over, I'll make it dead easy for you. Artist and song titles please for the following:

- Yes, I've been broken-hearted, blue since the day we parted
- I took her to a supermarket; I don't know why, but I had to start it somewhere
- Sitting here resting my bones and this loneliness won't leave me alone, yes
- So you think you can stone me and spit in my eye.
- You are my candy girl and you got me wanting you.

But then again, maybe I won't.

And the tie breaker is: Which of these songs got to Number 1 in the UK singles chart?

Remember, no cheating. But then again, perhaps this month I should let you cheat: we don't want to deprive the winner's chosen charity of a £10.00 jackpot.

**MAC**

### IAN REYNOLDSON ELECTRICAL

For all your electrical needs

No job too small

Tel. 01748 886725

Mobile: 07814547339

PATRICIA

DAIRY COTTAGE, LOW ROW

Experienced in both men's and ladies' sewing alterations.

Most sewing tasks undertaken

'Will come to you'

01748 886905

## ANDY MALTON LTD – REETH GENERAL BUILDING CONTRACTOR

Dry lining/ plastering/ ceiling work

Roofing/ pointing/ guttering work

Most building repair work carried out

Free estimates - No job too small

**01748 884621 / 07837645104**

amalton56@fsmail.net



## **BELLEGREEN COTTAGE**

**Beautiful holiday cottage  
overlooking Reeth Green**

- Superbly equipped - sleeps 7
- 4 bedrooms, 2 bathrooms
- Open fire - all fuel included
- Free wifi
- Private parking
- Dogs welcome

**Contact Lyn on  
0115 922257**

**[www.bellegreen.com](http://www.bellegreen.com)**



**Ginger Tree**  
Holistic Health & Beauty

Kathy Scott of  
Ginger Tree Health & Beauty  
is at

Reeth Medical Centre on a  
Wednesday morning for  
Massage, Reflexology &  
Hopi Ear Candling

Call Kathy direct to book  
01748 889350 or 07530 602209

[www.gingertreebeauty.co.uk](http://www.gingertreebeauty.co.uk)  
[salon@gingertreebeauty.co.uk](mailto:salon@gingertreebeauty.co.uk)  
FB: [gingertreebeauty](https://www.facebook.com/gingertreebeauty)

## **THE PUNCH BOWL INN Low Row**

Open all day 11am until 11pm  
Lunch served daily 12pm until 2.30pm

### **Evening Mirror Menu**

**6pm - 9pm** Monday - Friday

**5pm - 9pm** Saturday

**5pm - 8pm** Sunday

### **Traditional Carvery**

Every Sunday 12pm - 2.30pm

### **STEAK NIGHT**

5th & 19th July & 2nd & 16th August

For further details or to reserve a table

Telephone: (01748) 886233

[www.pbinn.co.uk](http://www.pbinn.co.uk)

## **THE C.B. INN Arkengarthdale**

Outstanding fresh food served in a warm &  
friendly atmosphere.

19 en-suite bedrooms with amazing views.  
Available for dinners, weddings or meetings.

### **Lunch**

Mon - Sun 12pm - 2.30pm

Roasts available on Sundays

### **Evening Mirror Menu**

**6pm-9pm** Monday - Friday

**5pm - 9pm** Sat & **5pm - 8pm** Sun

**Menu Classics** only £11.95 served  
every evening along with our  
normal mirror menu.

**Early Bird Menu - 5.00pm till 7.00pm**

Friday 15th July & 19th August

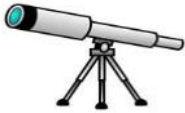
2 courses £11.50 3 Courses £15.00

**Quiz Night in aid of  
Arkengarthdale School  
Friday 1st July 8.30pm Start**

For further details or to reserve a table

Telephone (01748) 884567

Website: [www.cbinn.co.uk](http://www.cbinn.co.uk)



## Astronomy in the Two Dales

At the time of writing, we still do not know if we are IN or OUT. All I know is that I live IN the solar system and everything else is OUT there in deep space and can stay there, thank you very much.

So what is going on IN the solar system? Well the moon is new on the 4th and full on the 19th, which is good news, as the Delta Aquarid meteor shower peaks on the nights of the 28th and 29th. This is a low level meteor shower, with 10 - 20 meteors per hour, best viewed before dawn looking in a southerly direction.

On the 4th the Juno probe arrives at the planet Jupiter. Its mission is to "Understand origin and evolution of Jupiter; look for solid planetary core; map magnetic field; measure water and ammonia in deep atmosphere; and observe auroras." All this before the probe runs out of juice and NASA crash the probe into Jupiter.

There will be an interesting view in the sky, as around the middle of the month, Saturn, Mars, the moon and the star Antares will form a square in the southern sky.

Meanwhile, OUT there, the quest for life beyond our little world goes on. We, as humans, are a carbon based life form, but the planet we live on is mostly composed of iron and silica. New research has revealed that when planets first formed in the early life of the universe they had a high carbon content, so planets of graphite, carbide or diamond would have been the scene

for the creation of life forms. These planets would be orbiting a very rare type of star called a carbon-enhanced metal-poor star, formed when heavy elements were not widely dispersed throughout the universe. These stars can be considered as anaemic as they have only 100,000th the iron that our sun has, though scientists believe that life from these planets will still be carbon based.

From a distance, these carbon planets would be difficult to tell apart from more Earth-like worlds as their masses and physical sizes would be similar. Astronomers would have to examine their atmospheres for signs of their true nature, looking for gases like carbon monoxide and methane that would envelop these unusual worlds.

So, somewhere on a planet of solid diamond, in an atmosphere smelling of rotten eggs, carbon based life may be making important decisions and from their perspective it is us who are OUT there.

**The Starman  
Reeth Informal Astronomy Group  
[www.reethastro.org](http://www.reethastro.org)**

### **A SUMMER LUNCH**

in aid of

**St. Mary's Arkengarthdale &  
Holy Trinity Melbecks**

**ALL WELCOME at  
LANGHORNE HOUSE,  
KEARTON**

**Sunday 3rd July 12:30 onwards**

**Suggested donation £10**

**RSVP Tony & Pauline 886790**



# REETH AND DISTRICT GAZETTE LTD



## Leyburn Arts & Community Centre - *Events Calendar*

Richmond Road, Leyburn DL8 5LD - Film Tickets: Adults £6 - Concessions £5

### F I L M S

**Fri 01 July** - 5.00 pm & 7.30 pm - **In the Heart of the Sea** (12A) 2hrs 2m.

**Fri 08 July** - 5.00 pm & 7.30 pm - **Joy** (12A) 2hr 4m.

**Fri 15 July** - 5.00 pm & 7.30 pm - **Hail Caesar!** (12) 1hr 46m.

**Fri 22 July** - No Film will be shown due to 1940's weekend preparations.

**Fri 29 July** - 7.30 pm Only - **Trumbo** (15) 2hrs 4m. See below for 5 pm film.

### **YORKSHIRE SILENT FILM FESTIVAL SPECIALS (WITH PIANO)**

**Tue 12 July** - 2.30 pm Only - **The Count** 1916 (U) 24m. *Followed by:*  
**A Pair of Tights** 1929 (U) 20m. Plus one or two early British film shorts.

**Fri 29 July** - 5.00 pm Only - **Safety Last** 1923 (U) 1hrs 10m. Piano accompaniment.

### **PART OF THE 'EXPLORING FILM SEASON'**

**Tue 05 July** - 7.00 pm - **The Program** (15) 1hr 43m. £5. Cafe open 6 pm.

**Tue 02 August** - 7.00 pm - **Withnail and I** (15) 1hr 47m. £5. Cafe open 6 pm.

Supported by Film Hub North, led by Showroom Workstation. Proud to be part of the BFI Film Audience Network

### E V E N T S

**Sat 09 July** - 7.30 pm **Bob, Jess & Guests Including Niamh** Tickets £10.

**Fri 22 July** - 7.30 pm **Singalong Supper** With the superb Jayne Darling. Tickets £10.

**23 & 24 July** - **Leyburn 1940's Weekend** Join the festivities at The Old School House.

Tel: 01969 624510 - Email: [admin@oldschoolhouseleyburn.com](mailto:admin@oldschoolhouseleyburn.com) Web: [oldschoolhouseleyburn.com](http://oldschoolhouseleyburn.com)

F: [facebook.com/oldschoolhouseleyburn](https://www.facebook.com/oldschoolhouseleyburn) - Twitter: <https://twitter.com/TLeyburn> - Reg. Charity No: 1122092

## Hudson House

### Rooms for hire

Suitable for meetings, lectures, talks,  
training or social events.

**The Meeting Room** - maximum of 30 people.

**The Meeting Place** (evenings only) – maximum  
of 10 people.

Access to PCs, Internet, printer,  
photocopier and laminator.

### **The Orchard Gallery for hire**

Suitable for exhibitions of paintings,  
photographs and other artwork.

Own entrance through the garden.

Sales can be handled for you.

For prices (special rates for community use),  
bookings or more information please contact

Jill May on 01748 884 485 or

[admin@hudsonhouse.info](mailto:admin@hudsonhouse.info)

"Please use this valuable community asset"

## The Hair Salon



Arkengarthdale Road, Reeth DL11 6QT

We offer a wide range of advanced  
hairdressing services

**Everyone welcome - including children**

We stock Wella's System Professional (SP)  
hair care products in the Salon. They are a  
more personalised & specialist range that  
can only be stocked by hairdressing  
professionals.

If you have any concerns about your hair or  
scalp, feel free to call in the salon for our  
help and advice. We are very happy to help!

**Open Tuesday – Saturday**

**Late night Wednesday**

**Tel: 01748 884627**

## St Andrew's Update

**Conservation Group:** 10.30am Saturday 9th July. Please join us for this meeting. If you come you will be able to learn about the gravestone recording in Grinton churchyard and to make new records for our database. You will also be able to meet with members of the Upper Dales family history group who will be in attendance that day and on hand to answer any questions you might have about your family history in the Dales. We start at 10.30am and finish at noon. Free scones and coffee to all comers.

**Car Boot:** Sale Very many thanks to those who supported the car boot sale. We are especially grateful to the Brown family for providing the field for this event. A grand total of nearly £1400 was raised towards the Grinton bell appeal.

**Bell Appeal:** Look out for details in a future Gazette edition of the celebratory events when we hang the two new bells. We hope that this will be completed in early autumn. The fundraising for the bells continues as,

although we have raised the money to pay for the actual bells, the installation costs (the boring bit) has a little bit further to go to be totally realised. Many thanks to all those who have helped with this appeal so far - your support has been invaluable.

**Pimms and Hymns:** We are holding this service at 4.00pm on Sunday 7th August in the churchyard with an assembled band of players. Please volunteer if you would like to take part in the scratch 'band' and please do come and help us enjoy this 'out in the open air' service.

Further information on any of the above from **Susan Allison on 01748 884366.**

### TAKE TIME TO RELAX!

I can cook delicious dishes ready for your table or freezer, from canapés through to desserts.

You can have quality homemade food ready and on the table with minimal effort.

**Contact Sandie Bond  
on 01748 884794**

## NORMAN F. BROWN CHARTERED SURVEYORS & ESTATE AGENTS

SALES - LETTINGS - MANAGEMENT

FREE 'NO OBLIGATION'

MARKET APPRAISAL

AVAILABLE UPON REQUEST

14 Queens Road, Richmond,

North Yorkshire, DL10 4AG

Tel: (01748) 822473/822967

www.normanfbrown.co.uk

## James Peacock Solid Fuel Merchant Bainbridge



Good quality fuels at competitive prices.  
Deliveries to Wensleydale, Swaledale and Coverdale.

No delivery too small.

**Tel. 01969 650212/650465**

**Email:**

**james-peacock@btconnect.com**

**www.james-peacock.co.uk**



## The Queen's 90<sup>th</sup> Birthday Celebrations

Wow! What a great party we had on the Green: The sun shone; the village looked wonderful with bunting and flags galore; and everybody seems to have enjoyed themselves.

There are far too many people to thank individually but I have to mention Janet Seymour's Maypole Dancers, Reeth Brass Band and our Reeth Young Farmers for organising the Tug of War.

The Parish Council who sponsored the event by providing the Commemorative Mugs and supplying prizes for the games also deserve a mention.

So many people came along - I've

never seen the green so full. And where did all the young people come from? It goes to show that give a young person an egg and a spoon and they just can't help but try to out run the other competitors.

There is talk already of a repeat performance next year with more fun and games for the young and young at heart.

Any thoughts on this would be greatly appreciated.

**Richard Beal**

### Editor's Note:

Thanks are due also to Richard whose idea it was. He put a lot of time and effort into organising things such as the mugs, bunting and prizes (helped no doubt by Dorothy) and was largely instrumental in ensuring that the event was such a relaxed and enjoyable occasion.



## REETH AND DISTRICT GAZETTE LTD

Scenic Breaks - Luxury Holiday Lets



[www.swaleviewpark.co.uk](http://www.swaleviewpark.co.uk)

Brand new luxury static caravan for holiday lets. Warm and welcoming, 2 bedrooms, an en-suite double and a twin.

Complete kitchen with fridge freezer, dining area, lounge featuring an electric fire, TV with DVD & full central heating.

Wi-Fi available.

A quiet site ideal for exploring Swaledale and its surrounds, with river walks plus Richmond, Harrogate, York, Thirsk and Ripon all nearby. Also within reach of Whittby, Robin Hood's Bay and the East Coast.

Contact: Swaleview Caravan Park, Reeth Road, Richmond, North Yorkshire, DL10 4SF  
Telephone: 01748 823106  
Email: [info@swaleviewpark.co.uk](mailto:info@swaleviewpark.co.uk)  
Web: [www.swaleviewpark.co.uk](http://www.swaleviewpark.co.uk)



## KARL LONGDEN PLUMBING

Reeth, North Yorkshire

[karllongdenplumbing@yahoo.com](mailto:karllongdenplumbing@yahoo.com)

Tel. 01748 880364

Mob. 07969 329893

24 HOUR CALL OUT SERVICE



### Bruce at Glasgow

They say the world is divided into two groups of people: Those who 'get' Springsteen; and those who have never seen him perform live. He was phenomenal. And at just over three and a half hours, without a break, it was still too short. Quite simply the best concert I have ever been to.





## Swaledale Mountain and Cave Rescue Team

There were 4 incidents for the team last month:

**02/06/2016** (18) 11.30hrs: We were called by the Ambulance service to rescue a driver whose delivery wagon had left the road & dropped down a steep 200m banking. Alongside the Ambulance crews we treated & evacuated to the road.

**29/05/2016** (17) 14.30hrs: Just as we had concluded this month's training ex we were called to an injured mountain biker. The team alongside the Fire & ambulance crews treated & evacuated to the road.

**28/05/2016** (16) 09.00hrs: The team provided rescue & safety cover for the Nutcracker Mountain Bike event. 6 serious injuries dealt with.

**18/05/2016** (15) 19.00hrs: The team were called by the Police to recover a sheep from deep within the Buttertubs pot holes. A small team safely recovered the animal who said 'Thank Ewe' (I know it's terrible.)

## Property Maintenance & General Building

Building work & property maintenance undertaken

Plumbing, tiling, plastering

Kitchen & bathroom fitting

Joinery works

Small jobs welcome

Free No Obligation estimates

Also detail plans prepared for planning applications

**Contact Gary**

Tel. 01748 886691 / Mob. 07896 147207

E-mail [g\\_staines@sky.com](mailto:g_staines@sky.com)

## Fundraising update:

Thanks to the following for their support:

Butt House B&B, Keld £98.50

If you would like to help please contact Jill 01748 886807. Or drop an email [secretary@swaledalemrt.org.uk](mailto:secretary@swaledalemrt.org.uk) or a message via our Facebook page.

The fields are full of spring flowers now, so please keep to footpaths when crossing the meadows.

**DON'T FORGET IF YOU NEED  
MOUNTAIN OR CAVE RESCUE,  
call the POLICE on 999. They will  
call us & an ambulance (if required).**

[www.swaledalemrt.org.uk](http://www.swaledalemrt.org.uk)



MEMBER OF  
THE SMAE INSTITUTE

## Swaledale Footcare

Meg Squires MCFHP MAFHP

Home Visits Including:

Toenail Cutting

Corn Treatment

Removal of Hard Skin and Calluses

Treatment of Thickened and Fungal Nails

Phone Reeth: 01748 884795 or Mobile: 07929065602

Email [meg.e.squires@gmail.com](mailto:meg.e.squires@gmail.com)

Member of the British Association of Foot Health Professionals







## Computer Corner

With Carol Haynes of Dales Computer Services

### What's Going On With Windows 10?

Basically it is a case of Microsoft knows best. If you have Windows 7 or Windows 8 on your computer and you haven't been automatically upgraded to Windows 10 yet you are lucky.

Microsoft have taken it on themselves to download Windows 10 to users' computers and then automatically upgrade the computer without permission from the owner. Quite a few people have, quite reasonably, become quite upset about this and it will be interesting to see if the law suits start rolling out at some point.

#### What can you do?

Various options:

- 1) Accept the upgrade and start getting used to Windows 10 (see my comments below)
- 2) If this happens to you then you do have the option to decline the upgrade. To install Windows 10 your computer will restart and you will be confronted by a screen with a typical legal document to agree to - just refuse to agree to the document and your computer will be reverted to your old

## Dales Web Solutions

All aspects of Web site design

Visit: [www.daleswebsolutions.co.uk](http://www.daleswebsolutions.co.uk)

Email: [info@daleswebsolutions.co.uk](mailto:info@daleswebsolutions.co.uk)

Tel: 01969 666174

Mobile: 07837654030

version of Windows. (Note it will probably have another go at upgrading in the future but should stop after July 29th when the free upgrade period ends).

3) If your computer upgraded in the last 30 days you have the option to revert back to your old windows. Click on Start and then PC Settings, click Update and Security and select Recovery. Use the go back to Windows 7 or 8.1 option.

If you are happy with Windows 7 or 8 and definitely don't want Windows 10 and it hasn't already installed go to [www.tinyurl.com/blockWin10Upgrade](http://www.tinyurl.com/blockWin10Upgrade) (care with capital letters) - it will download a small file to your computer - double click on the file and allow it to make changes to your computer. Restart the computer and you will never see Windows 10 again.

#### If you choose Windows 10, what to expect:

If you had Windows 8 the first thing you will notice is the return of the Start menu (unless you have a touch screen device). For Windows 7 you will see a new style of start menu. The new menu has an apps panel to the right. You can download new apps from the app store (some free and some paid for). I may be a bit of a dinosaur but on a computer I really can't see the point of this other than to make Microsoft money - which is precisely what it is designed to do.

If you prefer the old Windows 7 style menu you can download "Classic Shell" for free from [www.classicshell.net](http://www.classicshell.net), install it and it replaces the new menu with one that looks and behaves exactly like the old Windows 7 start menu. You can still



## REETH AND DISTRICT GAZETTE LTD

access the new version by holding the shift key while you click on the start button.

The second thing you will notice is the new browser Microsoft Edge. This has not been terribly popular and has a number of glitches and strange behaviours that are gradually being sorted out. Internet Explorer is still available (just click Start and type Internet Explorer) - or even better download and install either Mozilla Firefox or Google Chrome as a more reliable and quicker alternative.

As with Windows 8 the new Windows comes with Windows Defender preinstalled (in Windows 7 it was called Microsoft Security Essentials and you had to download it and install it yourself). This is a reasonable and completely free AntiVirus programme. If you have another antivirus installed (such as Norton, MacAfee, Avast, AVG etc) then Windows Defender will be automatically disabled. Uninstalling your other antivirus and restarting bring Defender to life. I still recommend buying a copy of Malwarebytes AntiMalware ([www.malwarebytes.org](http://www.malwarebytes.org)) irrespective of the antivirus you use.

Other than the fact that the computer settings are now scattered into different places under Windows 10 (not just the control panel) and that you have no control over windows update any more, you won't really see a lot of difference in Windows 10 since Windows 7 or 8 and it should be fairly easy to adapt.

### Should you upgrade?

Generally I would say yes, and do it now if you are going to. The only exceptions are if you use programmes that don't

work in Windows 10 or if you have an old Windows 7 computer that will need replacing before 2020 (in which case stay with Windows 7). Also check external devices (printers, scanners etc.) will work in Windows 10 - they are not all getting new software from the manufacturers.

If you do decide to upgrade I would suggest backing up any important documents, uninstall any programmes you don't use. Uninstall your antivirus and other security software before the upgrade (most will not be needed in Windows 10 but you can reinstall it if you need to).

That's it for this month - any questions, ideas for articles etc. please email me at:

**carol.haynes@dalescomputerservices.com**

|                                                                                                                                                                                                                           |                                                                                                                                                                                                                                                                       |
|---------------------------------------------------------------------------------------------------------------------------------------------------------------------------------------------------------------------------|-----------------------------------------------------------------------------------------------------------------------------------------------------------------------------------------------------------------------------------------------------------------------|
| OPEN ALL YEAR ROUND, EVERYDAY                                                                                                                                                                                             | <b>TAKE HOME A PIECE OF THE DALES</b>                                                                                                                                                                                                                                 |
| <b>SWALEDALE WOOLLENS</b><br>MUKER-IN-SWALEDALE, RICHMOND<br>NORTH YORKSHIRE                                                                                                                                              | Call into our shop in Muker Upper Swaledale and see what unique garments we have on display from hand knit cardigans, sweaters, hats, scarves & gloves to machine knit sweaters & cardigans for both ladies & gents. We also stock sheepskin rugs, slippers & gloves. |
|                                                                                                                                         | <b>WE ARE OPEN EVERYDAY</b><br>Tel. 01748 886251                                                                                                                                                                                                                      |
| Email: <a href="mailto:mail@swaledalewoollens.co.uk">mail@swaledalewoollens.co.uk</a><br>or visit our website where you can order online:<br><a href="http://www.swaledalewoollens.co.uk">www.swaledalewoollens.co.uk</a> |                                                                                                                                                                                                                                                                       |

# REETH AND DISTRICT GAZETTE LTD

## Church Services July 2016

|                                                                                                                                                                                                                                                  |          |                                                                                                                                                                                                                               |                            |
|--------------------------------------------------------------------------------------------------------------------------------------------------------------------------------------------------------------------------------------------------|----------|-------------------------------------------------------------------------------------------------------------------------------------------------------------------------------------------------------------------------------|----------------------------|
| <b>3<sup>rd</sup> July</b>                                                                                                                                                                                                                       | 9.15 am  | St. Mary's Muker                                                                                                                                                                                                              | <i>Eucharist</i>           |
|                                                                                                                                                                                                                                                  | 10.30 am | Low Row URC                                                                                                                                                                                                                   |                            |
|                                                                                                                                                                                                                                                  | 10.30 am | Reeth Methodist                                                                                                                                                                                                               |                            |
|                                                                                                                                                                                                                                                  | 11.00 am | St. Edmund's, Marske                                                                                                                                                                                                          | <i>Holy Communion</i>      |
|                                                                                                                                                                                                                                                  | 11.00 am | Holy Trinity Low Row                                                                                                                                                                                                          | <i>Eucharist</i>           |
|                                                                                                                                                                                                                                                  | 11.00 am | Reeth Evangelical Congregational                                                                                                                                                                                              |                            |
|                                                                                                                                                                                                                                                  | 2.00 pm  | Keld URC                                                                                                                                                                                                                      |                            |
|                                                                                                                                                                                                                                                  | 6.00 pm  | St. Andrew's Grinton                                                                                                                                                                                                          | <i>Iona Evening Prayer</i> |
|                                                                                                                                                                                                                                                  | 6.30 pm  | Reeth Evangelical Congregational                                                                                                                                                                                              |                            |
|                                                                                                                                                                                                                                                  | 6.30 pm  | Gunnerside Methodist                                                                                                                                                                                                          | <i>Midsummer Service</i>   |
| <b>10<sup>th</sup> July</b>                                                                                                                                                                                                                      | 9.30 am  | St. Andrew's Grinton                                                                                                                                                                                                          | <i>Eucharist</i>           |
|                                                                                                                                                                                                                                                  | 9.30 am  | St Michael's Downholme                                                                                                                                                                                                        | <i>Morning Prayer</i>      |
|                                                                                                                                                                                                                                                  | 10.30 am | Low Row URC                                                                                                                                                                                                                   |                            |
|                                                                                                                                                                                                                                                  | 10.30 am | Reeth Methodist                                                                                                                                                                                                               | <i>Family Service</i>      |
|                                                                                                                                                                                                                                                  | 11.00 am | Reeth Evangelical Congregational                                                                                                                                                                                              |                            |
|                                                                                                                                                                                                                                                  | 11.00 am | St. Edmund's, Marske                                                                                                                                                                                                          | <i>Morning Prayer</i>      |
|                                                                                                                                                                                                                                                  | 11.15 am | St. Mary's Arkengarthdale                                                                                                                                                                                                     | <i>Holy Communion BCP</i>  |
|                                                                                                                                                                                                                                                  | 6.00 pm  | St. Mary's Muker                                                                                                                                                                                                              | <i>Iona Evening Prayer</i> |
|                                                                                                                                                                                                                                                  | 6.30 pm  | Reeth Evangelical Congregational                                                                                                                                                                                              |                            |
| The Methodist Minister for the two Dales is<br>Rev. Les Nevin,<br>who can be contacted on<br><b>01748 823149</b> or by email:<br>les.nevin@icloud.com                                                                                            |          | Rev David Levell minister of<br>Reeth Evangelical Congregational Church<br>can be contacted on<br><b>07582 575815</b> or by email through the<br>church website at <a href="http://www.reethecc.co.uk">www.reethecc.co.uk</a> |                            |
| The Reverend Caroline Hewlett,<br>Vicar of the Parish of Swaledale with<br>Arkengarthdale,<br>can be contacted on<br><b>01748 884706</b> or by e-mail at<br><a href="mailto:carolinejhewlett@btinternet.com">carolinejhewlett@btinternet.com</a> |          | Roman Catholic Services<br>For information contact<br>Father O'Neil on<br><b>01748 822175</b><br><a href="http://www.stjosephsfx.co.uk">www.stjosephsfx.co.uk</a>                                                             |                            |

# REETH AND DISTRICT GAZETTE LTD

## Church Services July 2016

|                             |                                  |                                                                                                                                              |                            |
|-----------------------------|----------------------------------|----------------------------------------------------------------------------------------------------------------------------------------------|----------------------------|
| <b>17<sup>th</sup> July</b> | 9.15 pm                          | St. Mary's Muker                                                                                                                             | <i>Holy Communion BCP</i>  |
|                             | 10.30 am                         | Low Row URC                                                                                                                                  |                            |
|                             | 10.30 am                         | Reeth Methodist                                                                                                                              | <i>Holy Communion</i>      |
|                             | 11.00 am                         | Holy Trinity Low Row                                                                                                                         | <i>Eucharist</i>           |
|                             | 11.00 am                         | Reeth Evangelical Congregational                                                                                                             |                            |
|                             | 11.00 am                         | St. Edmund's, Marske                                                                                                                         | <i>Holy Communion</i>      |
|                             | 6.30 pm                          | Reeth Evangelical Congregational                                                                                                             |                            |
|                             | 6.30 pm                          | St. Mary's Arkengarthdale                                                                                                                    | <i>Iona Evening Prayer</i> |
|                             | 6.30 pm                          | Gunnarside Methodist                                                                                                                         | <i>Holy Communion</i>      |
| <b>24<sup>h</sup> July</b>  | 8.00 am                          | Holy Trinity Low Row                                                                                                                         | <i>Holy Communion BCP</i>  |
|                             | 9.30 am                          | St. Andrew's Grinton                                                                                                                         | <i>Eucharist</i>           |
|                             | 9.30 am                          | St Michael's Downholme                                                                                                                       | <i>Holy Communion</i>      |
|                             | 10.30 am                         | Low Row URC                                                                                                                                  |                            |
|                             | 10.30 am                         | Reeth Methodist                                                                                                                              |                            |
|                             | 11.00 am                         | Reeth Evangelical Congregational                                                                                                             |                            |
|                             | 11.00 am                         | St. Edmund's, Marske                                                                                                                         | <i>Holy Communion</i>      |
|                             | 11.15 am                         | St. Mary's Arkengarthdale                                                                                                                    | <i>Holy Communion BCP</i>  |
|                             | 2.00 pm                          | Keld URC                                                                                                                                     |                            |
| 6.30 pm                     | Reeth Evangelical Congregational |                                                                                                                                              |                            |
| <b>31<sup>st</sup> July</b> | 10.30 am                         | <i>Holy Trinity Low Row United Parish Eucharist. Preacher is Howard Petch from the Arthur Rank Centre, to celebrate Rural Mission Sunday</i> |                            |
|                             | 10.30 am                         | Low Row URC                                                                                                                                  |                            |
|                             | 10.30 am                         | Reeth Methodist                                                                                                                              |                            |
|                             | 11.00 am                         | Reeth Evangelical Congregational                                                                                                             |                            |
|                             | 11.00 am                         | St. Edmund's, Marske                                                                                                                         | <i>Holy Communion</i>      |
|                             | 6.30 pm                          | Reeth Evangelical Congregational                                                                                                             |                            |
| 6.30 pm                     | Gunnarside Methodist             |                                                                                                                                              |                            |

### Religious Society of Friends (Quakers)

Meetings are at Quaker House, 7 Grove Square Leyburn every Sunday at 10.30am. Additionally on the 2nd and 4th Sunday of every month at the Scout Hut, Quakers Lane, Richmond at 10.30am.

For further information contact Judith Calow on **01748 884320** or [www.dalesquakers.org.uk](http://www.dalesquakers.org.uk)

# REETH AND DISTRICT GAZETTE LTD

## Christian Aid

Thank you very much indeed to everyone for their support for Christian Aid Week. The House-to-House Collection in May, the Service at St Mary's Church, Muker together with the Coffee Morning at the Drop-In and the Produce Stall on the Green raised a total of £2842.29, similar to last year. Thank you all for your generosity.

The House-to-House Collection for each area was as follows:

|                        |                |
|------------------------|----------------|
| Arkengarthdale         | 245.00         |
| Fremington             | 26.54          |
| Grinton & Harkerside   | 373.92         |
| Gunnerside             | 124.02         |
| Healough & Whitaside   | 149.09         |
| Low Row                | 360.16         |
| Marske                 | 190.22         |
| Muker & Thwaite        | 169.71         |
| Reeth                  | 485.91         |
| West Stonesdale & Keld | 105.57         |
| <b>TOTAL</b>           | <b>2230.14</b> |

The focus for our collection this year was Christian Aid's work in Bangladesh. This year, we were moved to act by Morsheda's story. Morsheda lives in fear of the river. Every year floods threaten to destroy her home and leave her and her children with nothing. By raising her home 6 - 8 ft above water level, she'll have a safe place to live.

Thanks to your support, prayers and donations, Christian Aid partner organisations are helping to rebuild lives and livelihoods in countries like Bangladesh and giving some of the world's poorest people a better future. More details can be found on [www.christianaid.org.uk](http://www.christianaid.org.uk).

### Bric-a-Brac Stall

A Bric-a-Brac stall will be held for Christian Aid on **Friday 22nd July** on Reeth Green. Contributions for the stall are welcome. If you would like any items collected please ring Susan Allison on 884366 or Pauline on 886790

**Pauline Oldershaw, Secretary  
Upper Swaledale & Arkengarthdale  
Christian Aid Committee**

### Advertising in the Gazette

Full details from :

[treasurer@reethgazette.co.uk](mailto:treasurer@reethgazette.co.uk)

**p|a|a|d** architects | designers

## Architects Practice

New to the Dales  
Over 30 years experience  
We offer

Planning Advice + Applications |  
Surveys | Technical Drawings |  
Building Regulations Advice |  
Building Control Submissions |  
Contract Management |

Contact | Alex Pealing

Chartered Architect.

| Jacqueline Pealing

B.Eng.(Hons) Structural Engineer

**T:** 01748 886767

**M:** 07711 064287

**E:** [alex@pealingassociates.co.uk](mailto:alex@pealingassociates.co.uk)

**p|a|a|d** architects | designers

**Low Row & Feetham  
Literary Institute**

**Annual Family Fun Day  
and  
Queen's 90th Birthday  
Celebration**

**Sunday 7th August from 3.30 pm**

Fancy Dress for all ages  
Excellent Food

Quizzes and games for all the family

Tickets from Sue Alderson 886292 and  
Susan Calvert 886412

Adults £10, under 16 £5, under 5 free

Please get your tickets early  
to help the caterers

**Property Restoration,  
Improvements & Maintenance**

**Darren Chadwick, Keld (Est. 2001)**

General Building, Plumbing, Roofing,  
Bathroom & Kitchen fitting  
Floor/wall tiling, Joinery, Plastering,  
Decoration, Damp Treatments  
UPVC door and window fitting and repairs.  
Fireplaces, flues and stove installation.

**New:** Commercial, Agricultural and  
Residential spray and coating service  
(decorative or protective) for large wood or  
metal buildings or internal/external  
decoration.

**Free Quotes and advice  
always available.**

**Tel: 01748 886698  
07791 363285**

**Email: darrenchadwickbfc@aol.com  
www.darrenchadwick.com**

**Cafe Specials**

**SOUPER TUESDAYS**

Homemade soup, bread roll,  
slice of cake & hot drink  
Only: £6 every Tuesday



**SHOW STOPPER  
FRIDAYS**



Every week a 'Showstopper' of a cake!

**Dales** 

**Bike Centre**

Fremington

dalesbikecentre.co.uk

tel:01748 884908

**14 Bed Bunk 'n' Breakfast**

**New & Ex Hire Bike Sales  
Bike Hire & Repairs**

**ibis**

**COTIC**



**FROG  
bikes**



**Orange  
MOUNTAIN BIKES**

## Upper Dales Family History Group

Our speaker in May was Maxine Willett, the project archivist from the North Yorkshire County Records Office who has co-ordinated the mammoth task of sorting and indexing several centuries worth of paperwork belonging to the Graham family of Norton Conyers near Ripon.

The valuable archive was stored in an assortment of trunks and boxes in no particular order but a £96,300 grant from the Heritage Lottery Fund enabled NYCRO to acquire and preserve the collection. Maxine and her team of more than 40 volunteers have now reduced the chaos to 97 carefully sorted archive boxes of cleaned, transcribed and digitised documents which could be an absolute gold mine of useful snippets of information for anyone whose ancestors lived on or near one of the Grahams' estates.

The family acquired Norton Conyers in the 17th century and the archive is particularly rich in items from the 17th and 18th centuries but does include some items from late medieval times, as well as documents from Nunnington Hall and Kippax. Details of the ongoing work

can be followed in the blog at <https://atticsandacres.com/>

The documents include a large number of deeds, including some Medieval examples; manorial records including fines levied at the manor court for a range of offences; maps showing sizes of individual holdings and details of field names; personal papers including letters, diaries and notebooks; estate records showing rents, building repairs and sundry expenses; albums of family photographs from Victorian times to the early 20th century; and general papers which included recipes and home remedies.

Meetings begin again on September 28 at 2.00pm in Harmby Village Hall when the speaker is Dawn Webster on '*Kiplin Hall in time of war - from the 17th to the 20th century*'.

For further details of all events & the worldwide email discussion group:

Phone: 0743 2677 783

Email: [moverley.yorkshire@outlook.com](mailto:moverley.yorkshire@outlook.com)

or see the website:

[www.upperdalesfhg.org.uk](http://www.upperdalesfhg.org.uk)

Tracy Little

### Gazette Deadlines

August issue: July 10th

September issue: August 10th

## Lady Interior Decorator

Painting & Decorating,

Competitive rates, Free estimates, Friendly advice, Est 25 years

Call Yvonne on: 07838378836

Based in Richmond

Email: [yvonesdecor@hotmail.co.uk](mailto:yvonesdecor@hotmail.co.uk)







# BUCK HOTEL

REETH

QUALITY EN-SUITE ACCOMMODATION



LIVE MUSIC  
MOST FRIDAY AND  
SATURDAY NIGHTS!



FOOD SERVED  
ALL DAY!!

Don't pass the Buck...We promise we won't!

NOW SERVING OUR NEW SUMMER MENU  
QUALITY SELECTION OF REAL ALES AND FINE WINES  
DELICIOUS HOME MADE PIZZAS AND TAKE AWAY SERVICE AVAILABLE.  
PARTIES, WEDDINGS AND WAKES CATERED FOR IN OUR FUNCTION ROOM.

TO BOOK A TABLE OR RESERVE A ROOM - CALL: 01748 884210



*Philip Bastow Cabinet Maker*

- FURNITURE COMMISSIONS •
- SPECIALIST JOINERY •

WORKSHOP/GALLERY

Reeth Dales Centre • Silver Street • Reeth  
Swaledale • North Yorkshire • DL11 6SP

Tel: 01748 884555

Email:

cabinetmaker@philipbastow.plus.com

www.philipbastow-cabinetmaker.co.uk

# FATSHEEP



*from the Dales*  
A Fantastic Little Gift & Craft  
Shop On The Green At Reeth

Everything we sell is  
made in the  
Yorkshire Dales.

Including Reeth's own  
Swaledale Chocolate Company  
We are also home to the  
famous Glendale Ginger

01748 880189

www.fatsheep.co.uk



**YOUR LOCAL TRADITIONAL  
CHIMNEY SWEEP**  
NACS & HETAS qualified & registered

**We set ourselves very high standards  
and take every care in your home**

**We offer a comprehensive service**  
All types of chimneys swept to relevant BS Std.  
Bird guards & cowls, etc. supplied & fitted  
Advice freely given, problems solved  
Carbon monoxide detectors  
Chimney pots replaced

**01765 688078**  
**www.sweepinthedales.co.uk**

Stove Refurbishment  
Stove servicing and repair  
Solid fuel stove installations  
Stainless steel flexible linings  
Stainless steel rigid flue systems  
Only high quality components are used

**HETAS qualified & registered installer**  
**STOVE INSTALLATION**



**Old Waiting Rooms**

**Self Catering**  
**Hunmanby Railway Station (nr Filey)**  
**Victorian Charm. Modern comfort.**  
**Full weeks or short breaks.**  
**Sleeps 2. Dogs welcome.**

**www.oldwaitingrooms.co.uk**  
Or ring Monica Bridge: **01723 892426**

## Kearton Country Hotel, Thwaite



### Tea Rooms Restaurant & Bar

Family run hotel  
Large spacious restaurant  
with stunning views over Kisdon

#### Tea rooms & licenced restaurant open daily

11am – 5pm Mon to Fri  
10am – 5pm Sat - Sun  
Lunches served 12 - 4pm

#### Three course home cooked evening meals

Join our guests & experience our warm friendly hospitality.  
Evening meal reservation only

Real ale & fine wines

Tel **01748 886277**

Email:

[info@keartoncountryhotel.co.uk](mailto:info@keartoncountryhotel.co.uk)

[www.keartoncountryhotel.co.uk](http://www.keartoncountryhotel.co.uk)

# REETH AND DISTRICT GAZETTE LTD

## Swaledale

The gently flowing river; the steeply rising fells,  
And echoing through the dale, the ringing of church bells.  
The sights and sounds of Swaledale on a quiet Sunday morn,  
As I take in my surroundings and feel glad that I was born.

In this world of noise and turmoil, of never-ending strife,  
A time for peace and harmony is a treasured part of life.  
A time for quiet reflection; to measure and assess  
What is or is not, important for health and happiness.

For places to retreat and escape the noise and crowds,  
Where else but Swaledale could you find a place more well-endowed?  
A chance for precious solitude; to absorb tranquillity  
And comfort from the Yorkshire stone of great antiquity.

The grandeur of the rising fells; the timelessness of stone,  
A feast for all the senses; a place to call one's own.  
A place to hurry back to and very hard to leave,  
A little piece of paradise for those who will believe.

Maisie Turner

## BEAR COTTAGE INTERIORS

*Rustic Country Style Design*



*Curtains & Blinds, Fabric, Furniture,  
New Interiors and Gifts*

The Cattle Market, Market Place, Hawes, DL8 3RD Tel 01969 666077

*[www.bearcottageinteriors.co.uk](http://www.bearcottageinteriors.co.uk)*

## REETH AND DISTRICT GAZETTE LTD

### Thank You (1)

An enormous thank you to all in the churches and the community who plotted and schemed (and managed to keep all the plans secret for several months) to make our United Parish Service and lunch at the end of May into a celebration of my 10 years as vicar here.

A particular thank you to all who contributed to the very generous cheque; we plan to use the money to go away in the summer. Alex appreciated being thought of too, and will enjoy his large bottle of gin.

Also, thank you to Gladys for a lovely celebration cake which we shared after the service.

**Caroline**

*Are you sure it wasn't Cockett's?*

### Thank You (2)

Gunnerside Village Hall held a soup and sweet lunch on Bank Holiday Monday, 30th May, when we raised £460.70 for the hall.

We would like to thank everyone who made donations of soup and puddings and also to the numerous volunteers who helped with washing up and clearing up and to the other stallholders who helped to boost the total. **Joan Rice**

### Thank You (3)

The trustees of Feetham & Low Row Village Institute would like to thank everyone who supported the recent Coffee Morning which raised a total of £469.90 for the on-going maintenance of the Institute.

#### Calvert & Jenkinson Ltd Building Contractors



All aspects of building work carried out from renovation to new builds, plastering to roofing.

Tel:

**01748 825962**

**07837 955869**

Email: [cjbuildersltd@gmail.com](mailto:cjbuildersltd@gmail.com)

Company No: 6769263

#### REETH VILLAGE STORE

We supply a wide range of items including:

locally baked bread, pastries, cakes, fresh fruit & vegetables, dairy produce, soft drinks, ice cream, household goods, confectionery, tobacco and greeting cards.

Electronic phone card top up and debit/credit card facilities.

A fine selection of wines & spirits.

Daily and weekend papers.

#### Opening Hours

Mon-Fri 7am-7.30pm

Saturday 7am-7pm

Sunday 8am-4pm

Tel: 01748 884552

## Dales Reyno-Vations



### General Building & Maintenance

Property renovations / Roofing

Kitchen fitting / Joinery

Bathroom suites / Tiling

Painting & Decorating

Patios / Landscaping / Ground maintenance

**Free estimates / Insurance quotes**

**No Job too small**

### D Reynoldson

11, Place Hill, Reeth, Richmond

North Yorkshire, DL11 6SD

**01748884309 / 07792458801**

Email [dave.reyno@btinternet.com](mailto:dave.reyno@btinternet.com)

## RED WEB

**A locally based  
web design company,  
providing professional,  
stylish and affordable  
websites.**

**We offer a wide range of creative solutions**

- ◆ Full website design service
- ◆ Manage & update existing websites
- ◆ Advice on every aspect of the internet
- ◆ Multimedia production

To find out more, phone John on

**01748 886545**

or visit our website

[www.redweb.red-film.co.uk](http://www.redweb.red-film.co.uk)

## *Ghyllfoot, Gunnerside*

### Fully Licensed Tea Room & Bistro

Open 10:30 – 5.00pm

(Closed Tuesdays)

Bistro open Wed & Sat evenings.

Traditional Sunday lunches served.

(Booking for both the above advisable.)

Curry takeaway 1<sup>st</sup> and 3<sup>rd</sup> Monday

of each month - 6.00pm-7.00pm.

Functions for up to 45 catered for.

Check our website for monthly.  
special events.

Enjoy home cooked food in  
pleasant surroundings.

Call us on **(01748) 886239**

E-mail: [enquiries@ghyllfoot.co.uk](mailto:enquiries@ghyllfoot.co.uk)

Visit: [www.ghyllfoot.co.uk](http://www.ghyllfoot.co.uk)

## SWALEVIEW COTTAGE

**Beautifully furnished, four bedroom  
single storey holiday home on the  
banks of the river Swale, yet only 5  
minutes from Richmond.**

**Lovely location for birds and wildlife**

**Sleeps 2-6**

**Short breaks from only £270.**

**Sorry no pets**

**Please call Andrew or Eileen Carter**

**01748 823106**

## Reeth Parish Council Annual General Meeting

The following officers were elected. Chair - Martin Cluderay; Vice chair - Jennifer Kendall; Green wardens - Graham Frankland and Richard Beal; Market rep - Martin Bearpark; Memorial Hall rep - Richard Beal; Clerk - Ian Scott. Martin Bearpark was thanked for his many years of service as chair of the council.

**Accounts:** The accounts for the year were approved and the annual return was signed.

**Road Closure:** There would be a road closure at Low Row from 9.30am to 3pm from June 27 to July 3 to allow work by BT.

**Council membership:** A notice would appear in the June Gazette to advertise the council vacancy which had arisen following the death of Coun David Allinson. One application had already been received as a result of other local publicity.

**Street lights:** One light in the Mews had not yet been fully installed and one at the bottom of Reeth was still to be repaired.

**Parking on the green:** Work to protect some areas of the green with posts and chains was ongoing. Problems were still arising due to bins taking up parking spaces and unauthorised cones being placed on the grass outside properties.

**Royal birthday:** Coun Beal reported that arrangements had been made for a village party on Sunday, June 12, from 12.30pm to mark the Queen's 90th birthday. The band would play on the green and there would be maypole dancing as well as games for all ages.

Commemorative mugs would be given to local children and residents would be invited to bring a picnic.

**War Memorial:** The clerk had met a local building company to discuss adding the two extra names to the memorial.

**Defibrillator:** Coun Gale reported that a local business owner had offered to contribute to a defibrillator in the parish.

**Dog fouling:** Dog fouling was still a problem on the green and was of particular concern on the patch of grass outside the ice cream parlour where families often sat to eat. It was agreed to experiment with designating that particular part of the green as a picnic area and requesting owners to keep their dogs away from it.

**Website:** Coun Gale offered to set up a parish council website to host the minutes and other important notices.

**Footpaths:** Gary Woodward would be asked to cut back the bushes which were blocking the footpath opposite Draycott Hall. Coun Frankland would find out who owned the land where they were growing.

Tracy Little



**J W Porter & Sons**

Building + Roofing Contractors

All aspects of building work  
skilfully undertaken by  
local time-served builders,  
with over 30 years' experience  
of building in the dales.

Contact Greg, on:  
**01748 886 434 / 253 or  
07817 719881**



# The Healing Collective

Swinithwaite Wensleydale

Are you feeling stressed, unhappy, anxious overwhelmed or weary? Are you suffering from physical illness like back pain? We offer a range of complementary therapies to help and revive you.

**Reiki Reflexology**  
**Counselling Bach**  
**Shiatsu Remedies**  
*Mobile services available*

Open sessions 1st Saturday of every month 10-4pm  
Meet the therapists and have a FREE taster session

t: 0845 654 576

info@healingcollective.co.uk

www.healingcollective.co.uk

Our therapy room is at the Coach House adjacent to Berry's Farm Shop & Cafe

## TREVOR J. HIRD

**ELECTRICAL CONTRACTOR**

No job too small **FREE** estimates

PAT Testing Specialist

**Telephone 01748 832238**

## Attention Landlords

### LEGIONNAIRES' DISEASE

The law is clear that if you are a landlord and rent out your property (or even a room within your own home) then you have legal responsibilities to ensure the health and safety of your tenant by keeping the property safe and free from health hazards.

There is a legal duty for landlords to assess and control the risk of exposure to legionella bacteria.

A qualified and accredited assessor from Northern Energy Surveyors can complete the risk assessment on your behalf for just £75.00 plus VAT. For more information please call...

Tel: 01748 884207

Mob: 07530 617687



Email: info@northernenergysurveyors.co.uk

**Portugal Sol**

**To Let**

**Stunning properties**

Write to:

**Margaret,**

**29 Moor Road, DL10 5PD**

stating requirements, dates,

family budget,

party leader's profession,

for the holiday of a lifetime

In Portugal.

A beautiful land to fall in love with.

**Mobile: 074 700 32317**

### STATIC CARAVAN TO LET

On Park Resorts site

Cayton Bay Scarborough

Ideal for mini breaks or longer

Full on-site facilities

Sleeps up to 8 people

To book: 01748 884657

mstephenson1@hotmail.co.uk

## STUBBS ELECTRICAL

Your Local Electrical Service

- Rewires/alterations
- Showers/storage heaters
- Fire alarms/emergency lights
- Underfloor heating
- Fault finding
- Landlords' certificates
- PAT Testing
- Solar electric

Contact Stephen on:

**T: 01748 822907**

**M: 07980 130014**

E: stephen@stubbselectrical.co.uk

W: stubbselectrical.co.uk





# G E BROWN & SON BUILDING CONTRACTORS

All Building Work Carried Out  
Damp Proof Course & Timber Treatment  
Specialist Joinery Work  
Work carried out by time-served qualified craftsmen

Email: [gebrownson@f2s.com](mailto:gebrownson@f2s.com)  
Telephone: 01748 886356

## WENSLEYDALE TREE & HORTICULTURAL SERVICES

(Est. 1995)

DAVID ALLEN (HND Arboriculture)



Fully insured (£5 million)

Professional tree work: felling,  
crown thinning etc undertaken  
to BS 3998

Petrol log splitter for hire

Woodchipper for hire

Tree stump removal

Hedge establishment and maintenance.

Supply /planting of forest and ornamental trees

Fruit tree maintenance. Weed control services

Tel. 01969 667364 Mobile 07811 576108

E-mail:

[enquiries@treesinwensleydale.co.uk](mailto:enquiries@treesinwensleydale.co.uk)

[www.treesinwensleydale.co.uk](http://www.treesinwensleydale.co.uk)



## Dawn Clarkson Associates

Accountants and Business Advisors

*Minding your business*

- Monthly Bookkeeping
- VAT Returns
- Company Accounts
- Sole trader & Partnership Accounts
- Letting Accounts
- Business Start-ups
- Business Coaching
- Payroll
- Tax Returns
- CIS Returns
- Charity Accounts

**ESTABLISHED REPUTATION FOR SERVING SMALL BUSINESSES**

Need help getting your books in order?

Call Dawn to discuss a Bookkeeping and Accounting  
Service to meet your needs at an affordable rate

**Tel: 01969 624999 [www.dawnclarkson.co.uk](http://www.dawnclarkson.co.uk)**

**Email: [dawn@dawnclarkson.co.uk](mailto:dawn@dawnclarkson.co.uk)**

**Follow us on Twitter @DClarksonAssoc**

**Melbecks Parish Council**  
**May 2016**

**Election of Officers:** Cllr Calvert proposed Cllr Alderson as Chair, this was seconded by Cllr Silver. There were no other candidates and Cllr Alderson was elected as Chair. Cllr Calvert proposed Cllr Crapper as Vice-Chair; this was seconded by Cllr Alderson and Cllr Crapper was elected as Vice-Chair.

**Notice Board for Low Row:** Cllr Calvert advised that he had spoken to Muker Parish Council about their notice board and it was agreed that the Clerk would look into pricing some new notice boards.

**Dog waste bin:** The Clerk advised that a dog waste bin has been requested from RDC and the Clerk will contact them again to find out when it may be available.

**Audit:** The Annual Governance statement was reviewed and approved by the Council and the Accounting Statements were reviewed and adopted by the Council. The accounting statements were signed by the Chair.

**Low Row Institute:** A cheque was signed for £40 for the hire of Low Row Institute.

**Gunnerside Village Hall:** A cheque was signed for £30 for the hire of Gunnerside Village Hall.

**Highways:** The Clerk will contact Highways regarding wall down at Brown Hill Top and Beckside wall, Gunnerside, to find out when the work may be done.

**Planning application:** Robin Gate, Low Row: The Council raised no objections or comments.

**Planning decision:** The Roof,

Gunnerside (new first floor window).  
Granted with conditions.

**Royal British Legion:** A letter was read out from Martin Sunderland advising that he has replaced Chris Porter, as Appeal organiser for the 2 Dales.

**Superfast broadband for Low Row:** Cllr Blows had sent a message that he had attended a meeting which advised that Low Row would be getting Superfast Broadband, planned to be installed by Summer 2107. Cllr Blows will provide more information on this when it is available.

**Landslip at Rowleth Bottom:** The landslip has still not been moved, however discussion was ongoing between Reeth Estates and Highways.

**Next meeting:** Low Row Institute on Thursday July 21st at 7.30pm.

Nikki Adams



**R.A.Lofthouse**  
**Roofing Services**  
**Kirkby Stephen**

We specialise in traditional & modern slating, flagging and tiling.

We offer a reliable and competitive service in and around the Eden Valley

- Traditional slate specialist
- Re-roof to repair work
- Slating, flagging & tiling
  - Lead work
  - Velux windows
  - Chimney work

For a free quotation or any enquires  
please call

Tel: 017683 42689

Mob: 07557738016

Email: r.a.lofthouse@outlook.com



**Keld Countryside  
& Heritage  
Centre Events  
2016**

**Sat 9th July:** To the Source of the Swale Guided Walk 11:00 - 13:00 Cost: £3

**Thursday 28th July:** Kisdon Classic Circular Guided Walk. 11:00 This is a National Parks Event. Please contact Hudson House, Reeth Tel: 01748 884485 for full details.

**Sun 31st July:** Lead Mines of Beldi Hill Guided Walk 11:00 - 15:30 Cost: £5.00.

**Sun 21st August:** Meet the Yorkshire Shepherdess & Guided Walk 13:30 Cost £8 including cream tea and lift from Keld to Ravenseat Farm.

**Sun 28th August:** Swinner Gill in the Footsteps of Ella Pontefract 11:00 - 15:30 Cost: £5.00

**Saturday 10th September:** A History of Lead Mining in Keld & Upper Swaledale. Time: 14:00 Venue: Keld Chapel Free entry donations to the Keld project & Keld Chapel appreciated.

**Sat 12th November:** Celebration Ceilidh at Keld Public Hall at 7.30 p.m. Dancing to live Ceilidh Band, Cobbler's Jig Adult price: £15 Concessions: £12.50 & £10 includes 2-course supper. For full details of all events visit:

[www.keld.org.uk](http://www.keld.org.uk)

**BRAESIDE COTTAGE**

Overlooking The Green, Reeth

Sleeps 8

Three bedrooms; two bathrooms

Private courtyard Beautiful cottage garden

[www.braesidereeth.co.uk](http://www.braesidereeth.co.uk)

or Tel 0114 2467599



**Hudson House Centre  
Reeth**

Owned by the Community of  
the Two Dales

Community  
Gallery  
Learning  
Library  
Orchard  
Transport  
National Park Centre  
North Yorkshire CC  
Police  
Richmondshire DC  
Swaledale Festival

Business Forum  
Business Services  
Event Tickets  
Internet  
Local notices & information  
Meeting Rooms  
Offices  
Refreshments  
Shop  
Tourist Information  
Wi-Fi

**Open all year**  
7 days a week – 10am to 3pm

**01748 884485**  
[www.hudsonhouse.info](http://www.hudsonhouse.info)

**VICTORIA DESIGN GROUP**

Consulting Civil &  
Structural Engineers  
Tel: 01748 886717

All design work undertaken, whether your project is large or small.  
Also structural surveys  
[www.vdg.co.uk](http://www.vdg.co.uk)

**GREEN COMMERCE LTD.** Established for over 35 years

Best quality hardwood logs  
Kindling sticks also available  
Free Local Delivery

Call David Fenwick on

Tel: 01833 650151

Mob: 07921 317630



**P Bellwood Joinery and Building Services**  
Quality, Local, Reliable Time-Served Craftsman

[www.paulbellwood.co.uk](http://www.paulbellwood.co.uk)  
07964 051 004  
[paulbellwood@aol.com](mailto:paulbellwood@aol.com)

Bespoke Joinery  
UPVC & Timber windows  
and doors  
Kitchen Fitting  
Decking  
Plastering  
All aspects of building work



Fully insured.  
References available on request.



*Beauty and tranquillity.  
Quality and care.*

Cat Hole Cottages | Cat Hole House | Thwaite  
Richmond | North Yorkshire | DL11 6DR  
Tel: 01748 886366

Discover our treasury of gorgeous cottages in Swaledale and Arkengarthdale. Well-equipped, stylish and individual, our cottages offer guests a wonderful holiday in the midst of superb scenery!

To find your perfect cottage  
call Judith on 01748 886366

[www.catholecottages.com](http://www.catholecottages.com)  
[judith@catholecottages.com](mailto:judith@catholecottages.com)

**Critchley Hall**  
SOLICITORS



- Conveyancing
- Family Matters/Wills & Probate
- Commercial Property
- Leases & Tenancies
- Agriculture Property

*"Your local legal experts"*

Please Contact John Hall LLP / Stuart Hall LLP /

Debby Parish LLP

Critchley Hall Solicitors, The Office, Golden Lion Yard,  
Leyburn, North Yorkshire DL8 5AS

Tel: 01969 625 526 Fax: 01969 625 255

Email: [leyburn@chsolicitors.co.uk](mailto:leyburn@chsolicitors.co.uk)



Conveyancing  
Quality



Solicitors  
Regulation  
Authority



resolution  
first for family law

## The Longest Band Name

Now that you know the longest album title (see May edition) I'm sure you are keen to know which band has the longest name.

The band with the longest name which I have heard of is **The Presidents of the United States of America**, an Alternative Rock, Power Pop, Pop Punk combo formed in Seattle in 1993. Their single, *Peaches*, was nominated for a Grammy Award for Best Pop Performance by a Duo or Group with Vocal in 1996.

The band with the longest, most unpronounceable name is:

**Paracoccidioidomycosisproctitisarcomucosis**. Apparently it's a combination of several medical terms and diseases. They are a Mexican band, formed in 1999, who specialise in Goregrind, Deathgrind, Grindcore and Noisecore. They have released 5 albums to date.

But the honour of Longest Band Name goes to **The Rock and Roll Dubble Bubble Trading Card Co. of Philadelphia - 19141**. They released a single in 1968 called *Bubble Gum Music / On A Summer Night* which I think was the only thing they ever released. You can find it on various compilations of Bubblegum Music - or you could pay around £15.00 for a second-hand copy of the vinyl single. But frankly, it's not worth it.

### Cosy Holiday Cottage

Attached to owners' farmhouse  
on Hill Farm in Arkengarthdale.  
Sleeps 2. No pets. E.M. on request.

**Mrs Gladys Atkinson**  
Tel. 01748 884550

### SCIENCE TUITION

Dr Richard Sharp  
Specialist Tutor For A Level Biology,  
GCSE Biology, Chemistry, Physics, Additional  
Science And Core Science.

Controlled Assessment Preparation  
Very Reasonable Rates. Why Not Double Up  
With A Friend At Same Rate?

**sharpr1966@gmail.com**

**07943 715003 or 01748 884584**

### NYCC HOME LIBRARY DELIVERY SERVICE

This service is provided fortnightly  
on Thursdays for Reeth and Upper  
Swaledale villages.

For elderly or disabled residents

**Contact tel. no. 01748 824331**

Please leave a message or phone  
**Colburn Library: 0845 4349502**

## D. J. OLNEY

*Painter & Decorator*

*Interior & Exterior*

*Call*

**01748 884065 or**

**07801 026 006**

### CROSSLAND TREE SERVICES

Tree Surgery  
Stump grinding  
Hedge cutting  
Fencing



Fully insured and Qualified Tree Surgeons  
All areas covered. **Tel: 01748 550 450**





"Will it take all day to conquer Earth or will we get away with just paying a pound?"

Afternoon tea hosted by Abby Blenkiron at [Reeth Memorial Hall](#)

On [Sunday 17<sup>th</sup> July 2016](#) between [1:30 and 4:30](#)

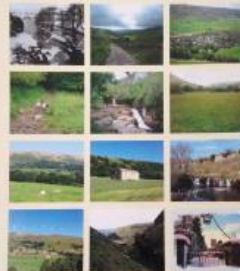
Only £5 to include:

Tea, Coffee or Juice and a selection of homemade cakes, scones & biscuits.

Raffle, Tombola & calendars



## Peru Fundraiser



Swaledale  
2017 Calendar

**CALENDARS CREATED BY ABBY BLENKIRON**

SWALEDALE CALENDARS ARE NOW FOR SALE AT JUST £5 EACH, AVAILABLE FROM:

[KINGS HEAD, GUNNERSIDE](#)

[GHYLLFOOT TEAROOMS, GUNNERSIDE](#)

[SPRINGFIELD HOUSE, REETH](#)

[SHOULDER OF MUTTON, KIRBY HILL](#)

[LINDA @ TSB BANK, RICHMOND](#)

OR CALL 01748 826453



Thanks to all the sponsors of the calendar, and also to:

N F Brown Estate Agents - Print Demon Systems -

Neshams Garage Richmond - Oliviers -

Rodbers - Blenkiron's Joinery - North Yorkshire Timber





# JEREMY MOON

— DECORATOR & PAPERHANGER LTD —

Established 1981

Quick turnaround for holiday homes and lettings

Fully insured

Reliable and trustworthy tradesman

High class decorating at affordable prices

References available upon request

Call Jeremy for a free quotation

T: 01748 880 155

M: 07876 764 812

Email: JEREMYLMOON@BTINTERNET.COM



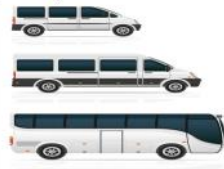
All aspects of tree work carried out  
by fully insured and NPTC  
qualified tree surgeons.

Tree removal, pruning, planting,  
hedging and stump grinding.

Contact Tom Hollingworth  
07929322227

[www.arborestrees.co.uk](http://www.arborestrees.co.uk)

## HARKERS & COACHES



Mini Buses & Coaches up to 35 Seats

&

Private Hire Taxis

**Tel: 01748 884533**

**Mob: 07703 559959**

Email: [harkerscoaches@hotmail.com](mailto:harkerscoaches@hotmail.com)

We are a family run business offering reliability and  
compensative prices

PS & FM Terry – Leaholme, Reeth DL11 6SF





## 2 Dales Football

As the season draws to a close we played top of the league Thirsk twice.

At home a tight first half saw a lot of the game played in the Dales half but not many chances given away. Dales grew in confidence and started to open the game up and play some really good football but the thing that has haunted them all season is a lack of confidence in front of goal leading to a couple of opportunities going begging.

Thirsk then made Dales pay with a well worked goal. Dales didn't give up and were justly rewarded when good work from Joe Alderson found Ryan Atkinson on the edge of the box. His first effort was blocked but he found the net to equalise with the second.

The first half remained tight but Thirsk took the lead right on the half time whistle which was cruel.

Thirsk started the second half a lot quicker than Dales snatching 3 quick goals but Dales did not give up settling down and confining Thirsk to some long shots which Ellen in goal handled well.

Finley Clark and Dan Marshall worked well together in defence trying to implement what we had learnt in training while Daniel Webster and Callum Bellwood caused Thirsk problems down the wings. Izzy Lundberg then Oliver Allison worked hard up front and Dales were rewarded with a goal right on full time which the Thirsk Manager described as the goal of the game. Daniel Marshall did much of the work intercepting the ball on the edge of his own box skilfully beating

two players then a third in a tackle to make a great pass to Ryan who took two touches to get into the box before smashing the ball in the net.

Dales only had one sub while Thirsk had about six all mainly older and the final score of 2-5 was a very creditable result.

The following Saturday we played Thirsk away and I don't have a report of the match. Dales were seriously short of players and indeed borrowed two from Barnard Castle by agreement but lost 7-0.

We now look forward to the new season and bid a sad farewell to Ryan, Joseph Scott, Oliver and Jack Stephenson who will be too old. We welcome back Dan Guy, Luke Metcalfe, Ryan Hewitson-Wheeler and Mark Jones from West Burton and hope to recruit one or two more.

We also say a sad farewell to Karen Dunne who has acted as team secretary and wish her and her family well when they move to Cheshire.

We very much welcome new players in all age groups who will not have reached their 12th birthday on 31st August.

**David Williams**  
**01748 884650**

[davidwilliams@mowdenpark.co.uk](mailto:davidwilliams@mowdenpark.co.uk)

## Aches & pains?

*Remedial massage can help...*

- neck & shoulders
- back • hips • knees
- feet and ankles
- arms & hands


Jennifer Thursfield

*Remedial Massage* NAMMT CNHC

Tel: 07889 546608 • Based in Richmond

[jtremedialmassage@gmail.com](mailto:jtremedialmassage@gmail.com)

[www.jtremedialmassage.co.uk](http://www.jtremedialmassage.co.uk)

Yorkshire Ambulance Service  NHS Trust

**Community First Responders Save Lives: You Could Too.**

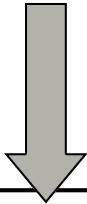
The Community First Responder (CFR) Scheme is a partnership between Yorkshire Ambulance Service (YAS) and local groups of volunteers living within the community.

As authorised volunteers for the ambulance service we work as part of a dedicated team whose aim it is to reduce the number of pre-hospital deaths in Yorkshire.

In many medical emergencies, the first few minutes are critical and if effective treatment can be provided within that time, lives can be saved. We are trained by YAS in basic life support skills, Cardio Pulmonary Resuscitation (CPR), the use of an Automated External Defibrillator (AED) and the administration of oxygen.

**What could I gain?**

- Free Training
- Skills & Knowledge
- Self-Development
- Practical experience
- CV Enhancement



**Rose Cottage**  
Just off the village green in Reeth  
**Sleeps 4**  
Dogs welcome  
Tel 01964 562239  
Email: [rosecottagereth@gmail.com](mailto:rosecottagereth@gmail.com)

**Wensleydale Concert Series**

Our next concert is on Saturday 16th July at Aysgarth Church at 7.30pm Parking is £1 in the Falls carpark (see the signs at the pay and display machines).

I am really excited about this concert which is a guitar recital with the brilliant guitarist Matthew Sear. His programme consists of music from Spain and South America plus Bach. He is also including a new (and wonderful) original work called "The Road to Damascus".

Tickets are now on sale via the website for £12.50 (under 18/student £3). Note all tickets at the door are £15.

See [www.wensleydaleconcertseries.co.uk](http://www.wensleydaleconcertseries.co.uk) for full details and to buy tickets. If you have any questions please use the contact page on the website or call:

**Carol Haynes on 10969 663026**



**Come and have a chat with us.**  
**On Thursday 21<sup>st</sup> July we will be at:**  
**Reeth Memorial Hall**



**7.00 – 9.00 pm**

**For more information Contact**  
**YAS Community First Responder Trainer Patrick Murphy**  
Tel: 07824 407955 Email: [patrick.murphy@yas.nhs.uk](mailto:patrick.murphy@yas.nhs.uk)

**WANTED - Customers, no previous experience necessary, at:**

**DALE FARM TOYS & BOOKS**

Dales Craft Centre, Reeth DL11 6SP

- Equestrian, Country, General, Children's & Local books.
- Specialists in signed copies
- Gifts, stationery & cards
- Extensive range of quality toys - Bruder, Britains, Breyer, Schleich, Ride on Toys & much, much more.

**Tel: 01748 884909 / 07790 480211**

**Email: info@equestrianbookfair.com**

**Web: www.equestrianbookfair.com**

**Reeth & District  
Community Sports Club  
300 Club Winners May 2016**

|     |     |                 |     |
|-----|-----|-----------------|-----|
| 1st | 47  | Paul Marshall   | £50 |
| 2nd | 206 | Eric Simpson    | £20 |
| 3rd | 163 | Vera Fleming    | £10 |
| 4th | 31  | Deborah Halcrow | £10 |

If you haven't got a ticket for next year contact **01748 884799** or **01748 884650**.

There are one or two left but not many. Thanks for all your support again.

**Steven Porter**

**Don't forget: The Gazette is online.  
www.2dales.org.uk**



Retailer of quality clothing, boots and packs.

Specialist in ultra-light equipment for walkers & trail/ultra runners.

Independent and family owned.  
**Shop Local.**



[www.swaledaleoutdoors.co.uk](http://www.swaledaleoutdoors.co.uk)

Bagshaws Yard, Anvil Square, REETH DL11 6TD

Tel: 01748 880298



**injinji**



**bridgedale**



**Marmot**



**MEINDL**



**smartwool**

**Muker Parish Council  
May 2016**

**Election of Officers** - All Officers were re-elected to post. Chairman - Cllr Whitehead. Vice Chair - Cllr Calvert. Treasurer - Cllr Calvert

**Muker Sign** - There had not been any feedback from Highways regarding the sign. Clerk to contact Ian Beighton of Highways

**Parking** - Holiday Cottage Muker - Nothing to report. Cllr Whitehead commented that Highways will not carry out the white / yellow line work until the road is free of salt.

**Ivelet Bridge** - Signage - Highways had responded stating that a new sign was being purchased and would be erected.

**Buttertubs Gritting** - NYCC Highways had written to the Parish Council stating that they will review the Priority grading of the Buttertubs in their annual meeting in August. Rishi Sunak MP had contacted Highways on the Council's behalf. Cllr Blows stated that the Hawes and Abbotside Parish Council were in support of the Parish's request to upgrade the Buttertubs as was the Upper Dales Partnership. It was also noted that this was a problem

of altitude and not just prioritisation, Highways had been informed of this. Cllr Metcalfe stated that the "golden hour" regarding ambulance response times could be affected if the Buttertubs could not be passed.

**Mobile Infrastructure Project** - Cllr Whitehead read out a letter from Rishi Sunak MP detailing his efforts so far and his continued commitment to improving broadband and mobile phone coverage for rural areas. He explained that the Government had recently signed a landmark deal with the four main mobile networks which would mean that 98% of people will be able to get 4G mobile coverage by 2017. Cllr Blows discussed that Keld would be receiving superfast broadband by the summer of 2017. Cllr Porter discussed the issue of not having a landline since 6 April as it had been cut off when BT had been working on the Broadband upgrade and that others near Oxnop were also affected. Cllr Blows to raise this with Chloe Lewis at RDC.

**Telegraph Pole Thwaite** - both Cllr Reynoldson and the Parish Council as a whole had written to BT and YDNP regarding the erection of the telegraph pole in Thwaite. YDNP Planning Dept had contacted the Parish Council and



**Greenway Cattery**

*Set in the Yorkshire dales providing safe and comfortable care for your cat, peace of mind for you.*

Open all year.  
Reasonable rates.

Greenways  
Grinton  
Richmond Nth Yorks

Tel 01748 884312



**A.J. CLACHER LTD**

Established 1961

**PLUMBING & HEATING ENGINEERS**

- Gas, oil and solid fuel central heating installations
- All aspects of plumbing and gas installations
- Boiler servicing and repair • Landlord Gas Safety inspections
- Bathroom installations and Plumbing • Heat Pumps and Solar Heating

Unit 38 Forge Way, Cleveland Industrial Estate, Darlington DL1 2PB

Tel. 01325 468372 • E-Mail [info@ajclacher.co.uk](mailto:info@ajclacher.co.uk)  
[www.ajclacher.co.uk](http://www.ajclacher.co.uk)

APHC METAS FireSafe UK VIESMANN

## REETH AND DISTRICT GAZETTE LTD

were making a site visit to look at the pole, however they stated that BT do not currently require any type of consent or prior notification to erect equipment to be used for fixed line broadband. BT had not responded.

**Business Muker** - Both NYCC Highways and YDNP were looking at the issue of tables and chairs outside the property. Clerk to contact Cllr Blows regarding RDC.

**Muker Car Park** - recycling area. It was noted that residents of Muker had cleared the area around the recycling bins. The Parish Council would like to extend their thanks to Charles and Jane Hepworth and Mike and Jackie Pope.

**Crow Trees Road** - Cllr Porter stated that there was no change - Clerk to chase Highways.

**Thwaite Notice Board** - Cllr Reynoldson to check the notice board - Cllr Whitehead to look at the cork backing.

**Finance** - The Chairman read the Annual Governance Statement. All were in favour. The Financial Report for the year ending March 2016 was circulated. All were in favour. Clerk to pass on to K Pellatt for Audit. The first instalment of the Parish precept had been received from Richmondshire District Council.

**Richmondshire D.C.** - The Chairman read out an e-mail received from RDC

**Don't forget: The Gazette is online.  
[www.2dales.org.uk](http://www.2dales.org.uk)**

regarding a new round of Area Partnership Funding which has been released. Applications looking to support any community orientated project, which can demonstrate a local need, are welcome with a maximum grant of £500. Deadline for applications 2 September 2016. Please see RDC website for further details.

**Correspondence/AOB** - The Chairman read out a letter which had been received from Hambleton, Richmondshire and Whitby Clinical Commissioning Group regarding the future of the shuttle bus service between the Friarage Northallerton and James Cook. A public engagement period is taking place between 3 - 17 May 2016 and an online questionnaire is available. Cllr Blows made the point that regardless of the health authority boundaries he is endeavouring to ensure that the upper dales with their particular geographical requirements are taken into consideration in any re-evaluation of service provision for example the current review of Darlington's A&E service.

The Cllr Porter queried what was happening with the landslip at Rowleth. Cllr Blows said he would contact Melbecks Parish Council to see if they had any information. **NR Turner**

### OXQUE MEATS

**Grass-reared Local Lamb For Sale**

Butchered Locally

£65 a half / £130 whole

Also available: outdoor-reared rare breed pork

**Phone Sarah on 07969 612413**

**Music Tuition for all ages with  
[www.colinbaileymusic.co.uk](http://www.colinbaileymusic.co.uk)**

**07711 211169**

**Drums & Percussion; Vocals;  
Piano & Keyboards; Music Theory;  
'Get Musical' Workshops.**

## Reeth Memorial Hall Events

**Friday 15th July at 8.00pm: Tim and Rhona Dalling, Songs From the Bonie Squad.** Tim, songwriter, singer, accordionist, performer and kilted fall-guy in the phenomenon that was The New Rope String Band, is touring with daughter Rhona, a fiddler, banjo player and rising songwriter. **BARGAIN OF THE YEAR** - Tickets £8 (door £10)

**Thursday 4th August at 8.00pm: Bob Fox, An Evening With The Warhorse Songman.** This will include performances of all of the songs in the play in their full versions along with some newly written material used in the recent BBC Radio Ballad of the Great War. Tickets £12 (£14 door).

**Saturday 20th August at 8.00pm: The Hot Seats** are a Richmond-based string-band quintet. That is Richmond Virginia. Their original material combines bluegrass, old time, ragtime, and good old rock and roll. Vocals, banjos, guitar, washboard, double bass, mandolin, fiddle and drums combine. See - <http://www.thehotseats.net/> - Tickets £12 (£14 door).

**Friday 26th August: Ricardo Curbelo, Rhythms From Latin America.** Ricardo (harp, cuatro, maracas and vocals) will take us on a colourful musical journey through different Latin American countries. See <http://www.ricardocurbelo.com> - Tickets £10 (£12 door).

Tickets available from **Reeth PO** or phone **John Little (01748 884759)** or visit [www.reethmemorialhall.co.uk](http://www.reethmemorialhall.co.uk). Tickets half price for under 16s.

**John Little**

## M.W Waste Services Environmental & Drainage Specialists

Septic Tanks Emptied & Cleaned  
Blocked Drains Cleared Fast  
Grease Traps & Interceptors Emptied  
Soakaways Rebuilt & Repaired  
Gully Emptying & Street Cleaning  
Refuse Collection  
Septic Tanks Installed  
High Pressure Drain Jetting  
Mobile Steam Cleaning  
Sewage Plant Maintenance  
**Industrial & Domestic Work Carried Out**

Low Hang Bank Depot  
Melsomby  
Richmond  
North Yorkshire  
DL10 5NQ  
Tel: 01325 377860/377850  
24/7 Call Out  
[Http://www.mwwaste.co.uk](http://www.mwwaste.co.uk)

**Clear Your Blocked Drains Fast With Our High Pressure Jetter**  
Free Quotes & Estimates

## THANK YOU

for your support of Reeth Methodist  
Church Drop In.

**As the Chapel will be closing on the  
28th August we can no longer  
accept donations of bric-a-brac for  
the Drop In.**

There are a number of charity shops  
in Richmond, Leyburn and  
Barnard Castle who would welcome  
your support and where we will be  
taking existing unsold items.  
Please consider the other charities  
and do not leave any new items in the  
school room.

Thank you  
**Our final service will be on Sunday  
28th August at 10.30am.**



## Fremington Village Hall

Newly redecorated and refurbished, the Village Hall (known locally as the Sunday School) is available to hire for all kinds of events, from regular classes, talks and community activities, to one-off functions like children's parties, lunches and dinners and special occasions such as wedding receptions and anniversary parties. The Hall has a small kitchen with electric cooker and microwave; toilet facilities including disabled toilet; and a small rear garden.

The Hall is a registered charity run by a small and dedicated volunteer committee. You can book the Hall by phoning or texting the bookings secretary **Julie Allen** on **07704 872873** or by email at **fremingtonvillagehall@outlook.com**

## Support the Reeth & District Gazette

Order your printing from us and we will credit 10% of the value of your order to the Gazette account at no extra cost to you!

**Quote Gazette when ordering**

## Booklet Printing

- Reports
- Manuals
- Brochures
- Catalogues
- Newsletters



*Saddle Stitched - Perfect Bound - Wire Bound*

*From your computer files or hard copy*

## Dales Computer Services

*For all your computer needs*



Carol Haynes  
Lairdswood Cottage  
Carperby  
Leyburn  
DL8 4DB

### Repairs - Upgrades & Maintenance

Software & Hardware problems

### Home & Small Office Networks

Wireless and Wired Networks with shared internet

### Website Design, Hosting & Email

Ongoing support or self-maintenance.

Hosting includes CPanel, PHP, MySQL support.

### Affordable Onsite & Remote Support

for PCs and Mac computers

(remote requires working internet connection)

### Monthly articles in local publications

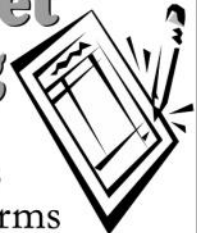
Established Dales Business

**www.dalescomputerservices.com**

**Tel: 01969 663798 or 07891 371280**

## NCR set Printing

- Invoices
- Estimates
- Order Forms



*Fast Turnaround - Padded - Loose Sets*



Reflections  
PhotoGraphic  
Services

**Tel: 01833 690733**

**www.refprint.co.uk**

**email: sales@refprint.co.uk**



# Diary Dates

## Strange But True, Apparently

### July

- 1st Quiz in aid of Arkengarthdale School, CB Inn. 8.30pm
- 3rd A Summer Lunch, Langhorne House, Kearton. 12.30pm onwards.
- 7th A Rural Roadtrip, Reeth Memorial Hall. 6.30-8.30pm
- 8th Sports Day, Arkengarthdale School. 1.30 pm
- 15th Tim and Rhona Dalling: Songs From the Bonie Squad, Reeth Memorial Hall. 8.00pm
- 19th Midsummer BBQ lunch, Quaker Close Flats. 2.00pm
- 21st Community Responders presentation, Reeth Memorial Hall. 7.00-9.00pm
- 22nd Bric a Brac Stall in aid of Christian Aid, Reeth Green

Sigurd the Mighty, a ninth-century Norse earl of Orkney, was killed by an enemy he had beheaded several hours earlier. He'd tied the man's head to his horse's saddle, but while riding home one of its protruding teeth grazed his leg. He died from the infection.

The world's deepest underwater postbox is in Susami Bay in Japan. It's 10 metres underwater. The postbox is for use by divers who buy water-resistant postcards at a diving shop in the town and write messages on them with an oil-based paint marker. An employee of the shop collects the cards once every few days and takes them to the local post office. The items are then delivered to recipients within a week of being posted.

### August

- 4th Bob Fox - The War Horse Songman, Reeth Memorial Hall 8.00pm
- 13th Swaledale Museum Tea Party, Orchard Garden, 3.00 - 6.00pm
- 16th Indoor Beach Party, Quaker Close Flats. 2.00pm
- 19th Lunch Clubs Cake Stall, Reeth Green.
- 20th The Hot Seats, Reeth Memorial Hall 8.00pm
- 26th Ricardo Curbelo, Reeth Memorial Hall 8.00pm

The katzenklavier ("cat piano") was a musical instrument made out of cats. Designed by 17th-century German scholar Athanasius Kircher, it consisted of a row of caged cats with different voice pitches, who could be "played" by a keyboardist driving nails into their tails.

Handshakes were originally meant to make sure that the person you were meeting wasn't carrying a concealed weapon. The hand clasp proved that your hand was empty and shaking was meant to dislodge any weapons hiding up the sleeve.

### September

- 23rd Muker Silver Band Concert, Keld URC.

Frowning burns more calories than smiling.



Gorgeous Cottages are the Letting Agency for Luxury Holiday Cottages in Yorkshire. Get in touch and find out how we can help your holiday home realise its full potential.



**'gorgeous'**

*[adjective]*  
 1. strikingly beautiful or magnificent  
 2. *(informal)* extremely pleasing, fine, or good



GORGEOUS YORKSHIRE

GORGEOUS COTTAGES



[www.gorgeouscottages.com](http://www.gorgeouscottages.com)



0844 736 6276



[info@gorgeouscottages.com](mailto:info@gorgeouscottages.com)

**Luxury Holiday Homes for Hire...**

**SWALEVIEW PARK**

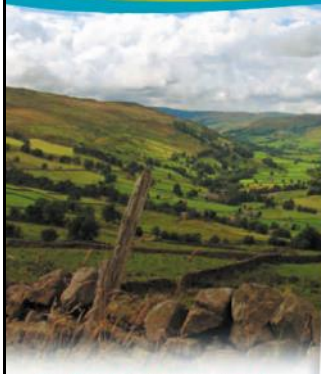
**OFF PEAK  
SHORT  
BREAKS**  
From Only  
**£249**

Enjoy the peace and tranquility of Swaledale in our luxury holiday homes alongside the banks of the River Swale with stunning views of the Swale Valley.

Each has two bedrooms, one ensuite and sleep four comfortably.

Centrally heated and beautifully decorated throughout with a fresh, modern style and a light and airy interior. All the conveniences of home (just bring your own towels and everything else is taken care of).

- Laundry facilities
- No Smoking
- Children's Play Area.



To find out more and make a booking, please contact Mr or Mrs Carter

Telephone 01748 823106

[info@swaleviewpark.co.uk](mailto:info@swaleviewpark.co.uk)

[www.swaleviewpark.co.uk](http://www.swaleviewpark.co.uk)

## The Bridge Inn, Grinton

Tel 01748 884224 [www.bridgeinn-grinton.co.uk](http://www.bridgeinn-grinton.co.uk)

Traditional coaching inn serving quality food in the restaurant and bars  
Open all day. Food 12noon to 2.30pm and 5.30pm to 9.00pm



Recommended in the CAMRA and Good Pub Guides  
Music night with local musicians Thursday from 9.00pm  
Children and dogs welcome. En suite accommodation



*Sarah's of Reeth*

07875 926946

Hair colouring

Hair cutting

Reflexology

Aromatherapy

Indian Head Massage

Facials

Raindrop Treatment



Reeth and Mobile

07875 926946

## 3D Cross-Stitch



### The Nutmeg Gallery

Dozens of models on display together with kits, accessories and the full range of DMC stranded cotton  
Normally open Mon-Fri, and Saturday afternoon.

Reeth Dales Centre, Off Silver Street,  
Reeth, DL11 6SP, 01748 884926



[www.3dcrossstitch.co.uk](http://www.3dcrossstitch.co.uk)